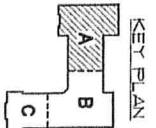
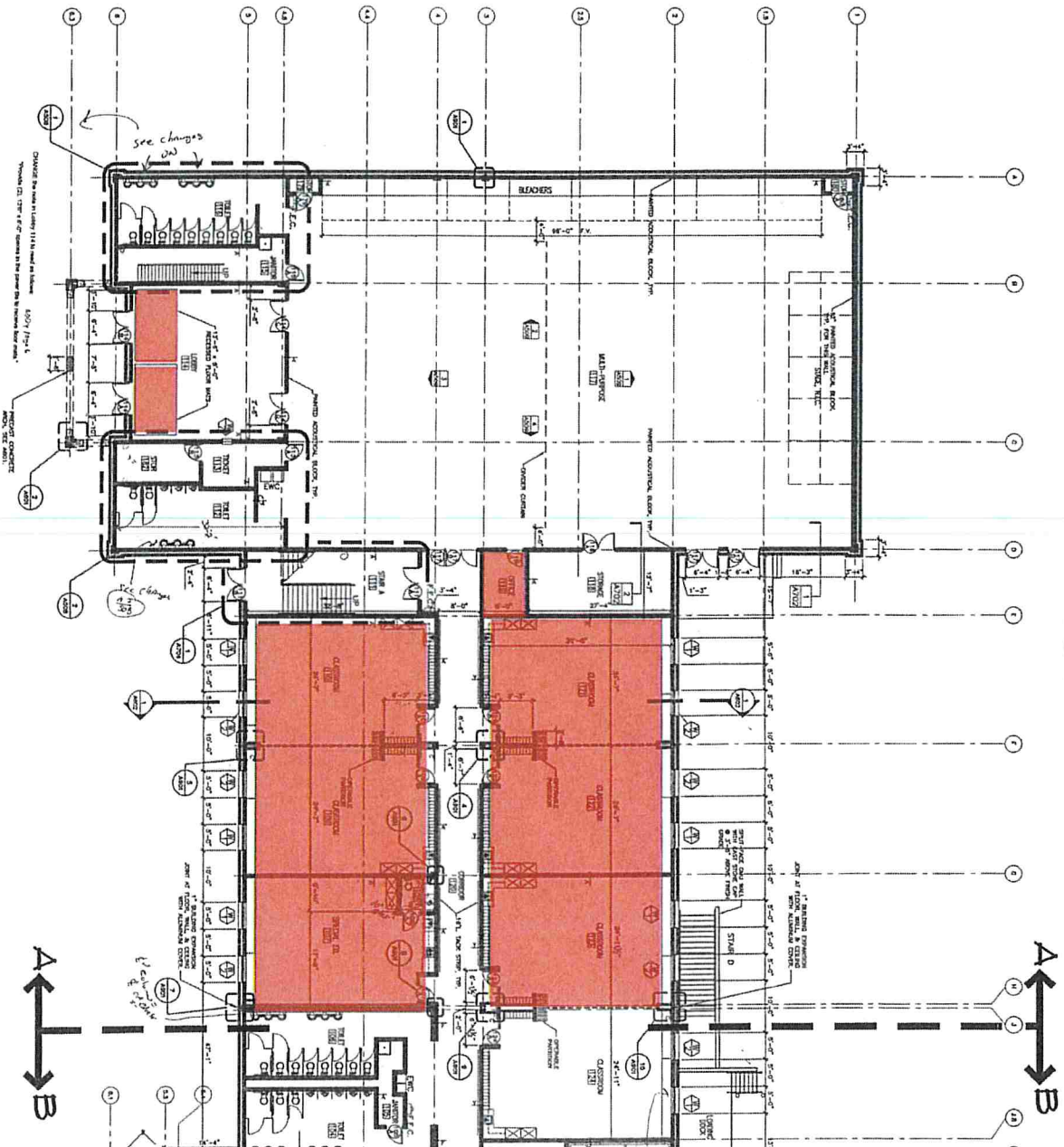


V.I.B.1.

V.I.B.1

ENLARGED FIRST FLOOR PLAN - SECTION 'A'



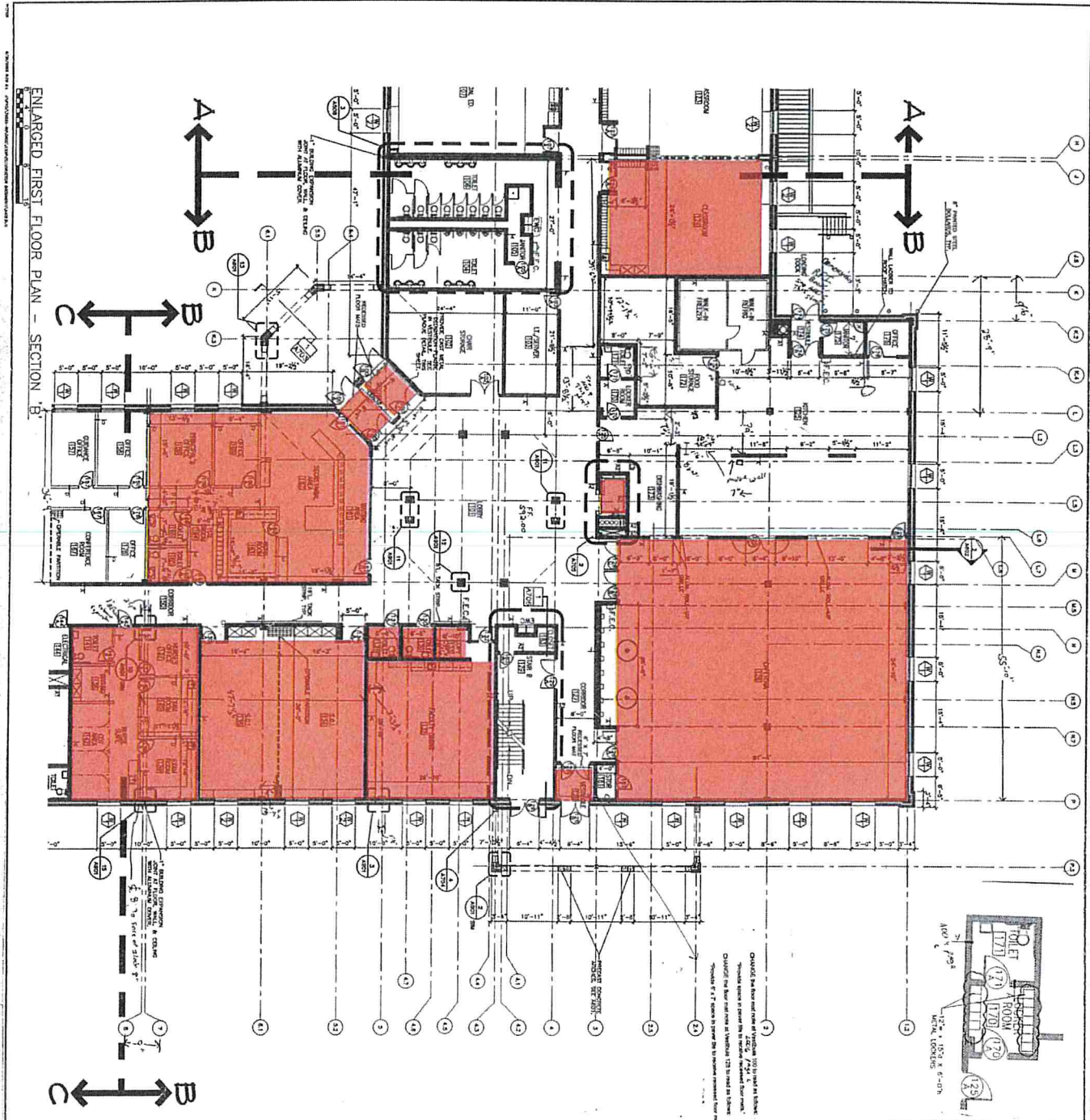
- GENERAL NOTES**
1. FOR LARGE SCALE ADMINISTRATION SUITE. SEE A501.
 2. FOR LARGE SCALE OFFICES SUITE. SEE A501.
 3. FOR LARGE SCALE CATERING LAVATORY. SEE A502.
 4. FOR LARGE SCALE GYMNASIUM / MULTI-PURPOSE ROOM LAVATORY. SEE A502.
 5. FOR LARGE SCALE TYPICAL WINGWALLS LAVATORY. SEE A502.
 6. FOR LARGE SCALE TYPICAL CLASSROOM LAVATORY. SEE A502.
 7. FOR LARGE SCALE TYPICAL SPECIAL EDUCATION CLASSROOM LAVATORY. SEE A502.
 8. FOR LARGE SCALE TYPICAL LAVATORY. SEE A504.
 9. FOR LARGE SCALE ART ROOM LAVATORY. SEE A504.
 10. FOR LARGE SCALE MUSIC ROOMS. SEE A504.
 11. FOR LARGE SCALE LAB AND GEL LAVATORY. SEE A504.
 12. FOR LARGE SCALE COMPUTER LAB LAVATORY. SEE A507.
 13. FOR LARGE SCALE COMPUTER ROOM. SEE A507.
 14. FOR WALL TYPE LECTURE. SEE A101.
 15. FOR WALL TYPE LECTURE. SEE A101.

SEE ENLARGED LEGEND
THIS A507 MULTI-PURPOSE CHEMICAL FIRE EXTINGUISHER IS TO BE PROVIDED IN THIS CROSS SECTION.

A507 4 Page 5
Drawing A507, A508 and A509 are to be checked by the architect before construction.



BID DOCUMENTS A401	EAST STROUDSBURG AREA SCHOOL DISTRICT EAST STROUDSBURG ELEMENTARY SCHOOL EAST STROUDSBURG, PENNSYLVANIA			CHECKED DATE		
	PROJECT NO. 7898-00 DATE FILED DRAWN BY CHECKED BY SCALE SHEET NO. 52/50 TOTAL SHEETS 52 DRAWING TITLE EAST STROUDSBURG AREA SCHOOL DISTRICT EAST STROUDSBURG ELEMENTARY SCHOOL ENLARGED FIRST FLOOR PLAN SECTION 'A'	REVISION BY DATE	CHECKED DATE			



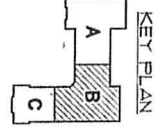
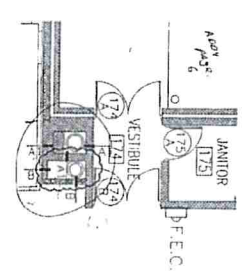
ENLARGED FIRST FLOOR PLAN - SECTION 'B'

- GENERAL NOTES**
1. FOR LARGER SCALE INFORMATION SITE, SEE A401.
 2. FOR LARGER SCALE DETAILS, SEE A401.
 3. FOR LARGER SCALE DIMENSIONS/ MULTI-PURPOSE ROOM LAYOUT, SEE A402.
 4. FOR LARGER SCALE TYPICAL ROOM LAYOUT, SEE A402.
 5. FOR LARGER SCALE TYPICAL ROOM LAYOUT, SEE A402.
 6. FOR LARGER SCALE TYPICAL ROOM LAYOUT, SEE A402.
 7. FOR LARGER SCALE TYPICAL ROOM LAYOUT, SEE A402.
 8. FOR LARGER SCALE TYPICAL ROOM LAYOUT, SEE A402.
 9. FOR LARGER SCALE TYPICAL ROOM LAYOUT, SEE A402.
 10. FOR LARGER SCALE TYPICAL ROOM LAYOUT, SEE A402.
 11. FOR LARGER SCALE TYPICAL ROOM LAYOUT, SEE A402.
 12. FOR LARGER SCALE TYPICAL ROOM LAYOUT, SEE A402.
 13. FOR LARGER SCALE TYPICAL ROOM LAYOUT, SEE A402.
 14. FOR LARGER SCALE TYPICAL ROOM LAYOUT, SEE A402.
 15. FOR LARGER SCALE TYPICAL ROOM LAYOUT, SEE A402.

THE EXTENSIBLE LEGEND
 TYPE AND WITH-APPROPRIATE GRAPHIC
 DIMENSIONS IN ITALIC RECESSED CHARACTERS.

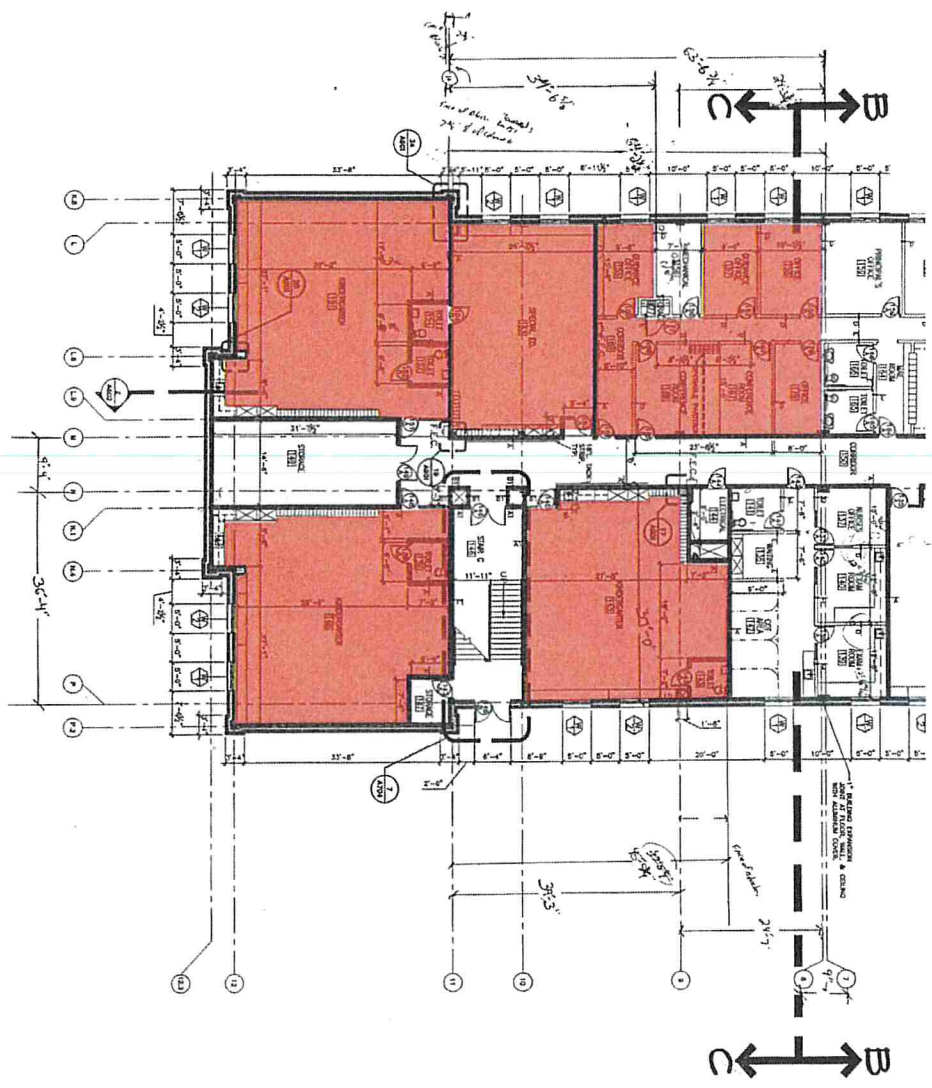
BOARD OF EDUCATION	CHAIRMAN	MEMBERS
SUPERINTENDENT	SECRETARY	MEMBERS
PLANNING COMMITTEE	CHAIRMAN	MEMBERS
ACADEMIC NAME	MEMBERS	
PLANNING COMMITTEE	CHAIRMAN	MEMBERS
ACADEMIC NAME	MEMBERS	

PLAQUE DETAIL



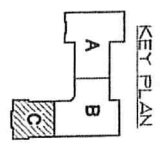
<p>EAST STROUDSBURG AREA SCHOOL DISTRICT EAST STROUDSBURG ELEMENTARY SCHOOL EAST STROUDSBURG, PENNSYLVANIA</p>		<p>DATE: _____ CHECKED BY: _____ DRAWN BY: _____ PROJECT NO: _____ SHEET NO: _____</p>	<p>h/b BLUMENFELT & BASSCO ENGINEERS, ARCHITECTS AND PLANNERS</p>
--	--	--	---

ENLARGED FIRST FLOOR PLAN - SECTION 'C'

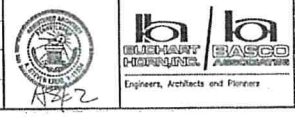


- GENERAL NOTES**
1. FOR LARGEST SCALE ADMINISTRATION SUITE, SEE A401
 2. FOR LARGEST SCALE NURSES SUITE, SEE A401
 3. FOR LARGEST SCALE OFFICE LAYOUT, SEE A402
 4. FOR LARGEST SCALE COMMUNITY/ MULTI-PURPOSE ROOM LAYOUT, SEE A403
 5. FOR LARGEST SCALE TYPICAL INTERMEDIATE LAYOUT, SEE A402
 6. FOR LARGEST SCALE TYPICAL CLASSROOM LAYOUT, SEE A402
 7. FOR LARGEST SCALE TYPICAL SPECIAL EDUCATION CLASSROOM LAYOUT, SEE A402
 8. FOR LARGEST SCALE LIBRARY LAYOUT, SEE A404
 9. FOR LARGEST SCALE MUSIC ROOMS, SEE A404
 10. FOR LARGEST SCALE LAB AND GYM LAYOUTS, SEE A404
 11. FOR LARGEST SCALE TYPICAL TYPICAL CLASSROOM LAYOUT, SEE A402
 12. FOR LARGEST SCALE TYPICAL SPECIAL EDUCATION CLASSROOM LAYOUT, SEE A402
 13. FOR LARGEST SCALE TYPICAL TYPICAL CLASSROOM LAYOUT, SEE A402
 14. FOR LARGEST SCALE TYPICAL TYPICAL CLASSROOM LAYOUT, SEE A402
 15. FOR WALL TYPE LEGEND, SEE A101

THIS ENLARGED SECTION
 SHOWS THE EXTERIOR WALL
 FINISHES IN FULL RECESSED CORNER.



EAST STROUDSBURG AREA
 SCHOOL DISTRICT
**EAST STROUDSBURG
 ELEMENTARY SCHOOL**
 EAST STROUDSBURG, PENNSYLVANIA



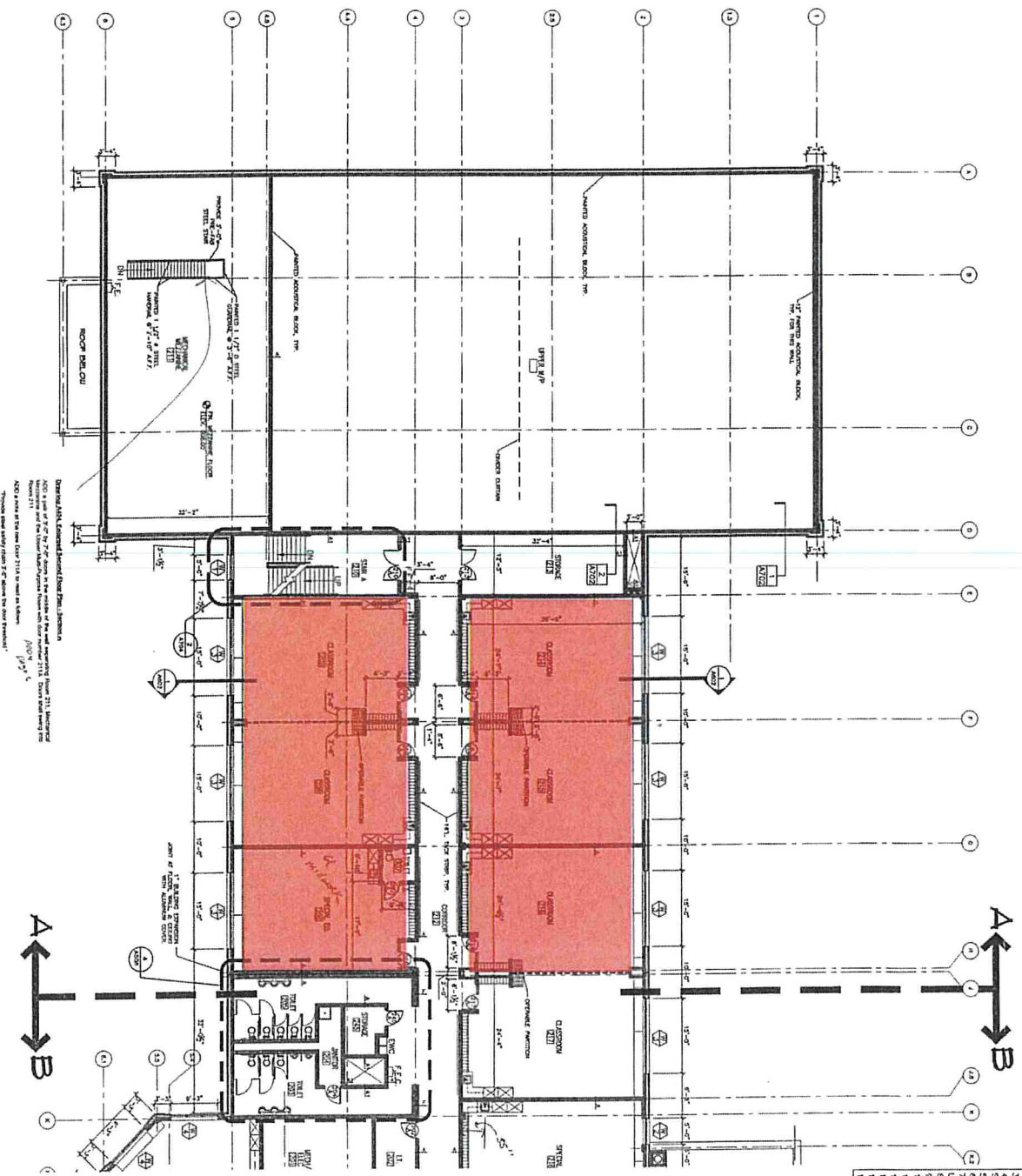
PROJECT NO.	17283-00
DATE	
BY	
REVISION	

A403

ENLARGED
 FIRST FLOOR
 PLAN
 SECTION 'C'

BID DOCUMENTS

ENLARGED SECOND FLOOR PLAN - SECTION 'A'

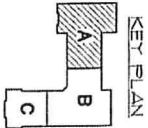


GENERAL NOTES:
 1. FOR LARG SCALE ADMINISTRATION SUITE, SEE A501.
 2. FOR LARG SCALE NURSERY SUITE, SEE A501.
 3. FOR LARG SCALE OFFICE LAYOUT, SEE A502.
 4. FOR LARG SCALE OFFICE/RECEPTION/RECEPTION ROOM LAYOUT, SEE A503.
 5. FOR LARG SCALE TYPICAL CLASSROOM LAYOUT, SEE A504.
 6. FOR LARG SCALE TYPICAL SPECIAL EDUCATION CLASSROOM LAYOUT, SEE A505.
 7. FOR LARG SCALE LIBRARY LAYOUT, SEE A506.
 8. FOR LARG SCALE ART ROOM LAYOUT, SEE A507.
 9. FOR LARG SCALE MUSIC ROOM, SEE A508.
 10. FOR LARG SCALE ART AND S.T.C. LAYOUT, SEE A509.
 11. FOR LARG SCALE IT SERVER ROOM, SEE A510.
 12. FOR LARG SCALE IT SERVER ROOM, SEE A511.
 13. FOR LARG SCALE TOILET ROOM LAYOUT, SEE A512.
 14. FOR WALL TILE LAYOUT, SEE A513.

GENERAL NOTES

1. FOR LARG SCALE ADMINISTRATION SUITE, SEE A501.
2. FOR LARG SCALE NURSERY SUITE, SEE A501.
3. FOR LARG SCALE OFFICE LAYOUT, SEE A502.
4. FOR LARG SCALE OFFICE/RECEPTION/RECEPTION ROOM LAYOUT, SEE A503.
5. FOR LARG SCALE TYPICAL CLASSROOM LAYOUT, SEE A504.
6. FOR LARG SCALE TYPICAL SPECIAL EDUCATION CLASSROOM LAYOUT, SEE A505.
7. FOR LARG SCALE LIBRARY LAYOUT, SEE A506.
8. FOR LARG SCALE ART ROOM LAYOUT, SEE A507.
9. FOR LARG SCALE MUSIC ROOM, SEE A508.
10. FOR LARG SCALE ART AND S.T.C. LAYOUT, SEE A509.
11. FOR LARG SCALE IT SERVER ROOM, SEE A510.
12. FOR LARG SCALE IT SERVER ROOM, SEE A511.
13. FOR LARG SCALE TOILET ROOM LAYOUT, SEE A512.
14. FOR WALL TILE LAYOUT, SEE A513.

SEE ENLARGED LAYOUT
 TYPE AND WEATH-RESISTANT CHIMNEY PIPE
 EXTENSION IN RELAY RECESSED CABINET.



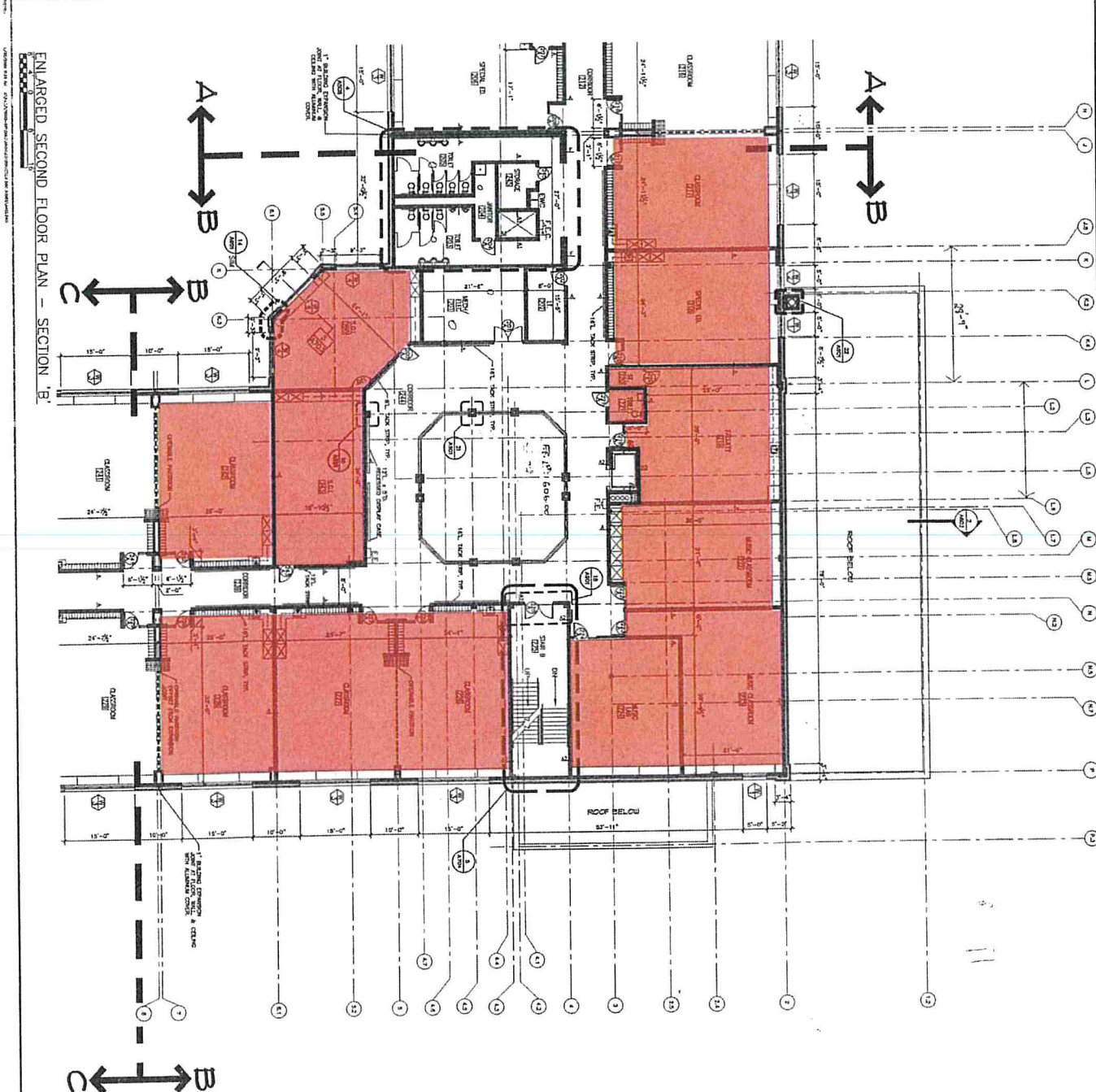
<p>DESIGN: []</p> <p>DATE: []</p> <p>BY: []</p> <p>FOR: []</p> <p>PROJECT NO.: []</p> <p>SHEET NO.: []</p> <p>SCALE: []</p>		<p>4404</p>	<p>4404</p>	<p>ENLARGED SECOND FLOOR PLAN - SECTION 'A'</p>	<p>4404</p>
--	--	-------------	-------------	---	-------------

EAST STROUDSBURG AREA SCHOOL DISTRICT

EAST STROUDSBURG ELEMENTARY SCHOOL

EAST STROUDSBURG, PENNSYLVANIA

Engineers, Architects and Planners



- GENERAL NOTES**
1. FOR LARGER SCALE DIMENSIONS, SEE A-01.
 2. FOR LARGER SCALE DIMENSIONS, SEE A-01.
 3. FOR LARGER SCALE DIMENSIONS, SEE A-01.
 4. FOR LARGER SCALE DIMENSIONS, SEE A-01.
 5. FOR LARGER SCALE DIMENSIONS, SEE A-01.
 6. FOR LARGER SCALE DIMENSIONS, SEE A-01.
 7. FOR LARGER SCALE DIMENSIONS, SEE A-01.
 8. FOR LARGER SCALE DIMENSIONS, SEE A-01.
 9. FOR LARGER SCALE DIMENSIONS, SEE A-01.
 10. FOR LARGER SCALE DIMENSIONS, SEE A-01.
 11. FOR LARGER SCALE DIMENSIONS, SEE A-01.
 12. FOR LARGER SCALE DIMENSIONS, SEE A-01.
 13. FOR LARGER SCALE DIMENSIONS, SEE A-01.
 14. FOR LARGER SCALE DIMENSIONS, SEE A-01.

KEY PLAN

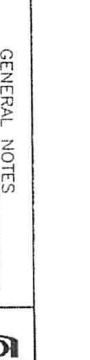
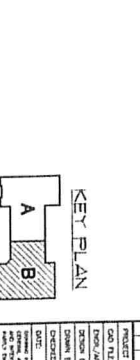
ENLARGED SECOND FLOOR PLAN - SECTION 'B'

GENERAL LEGEND

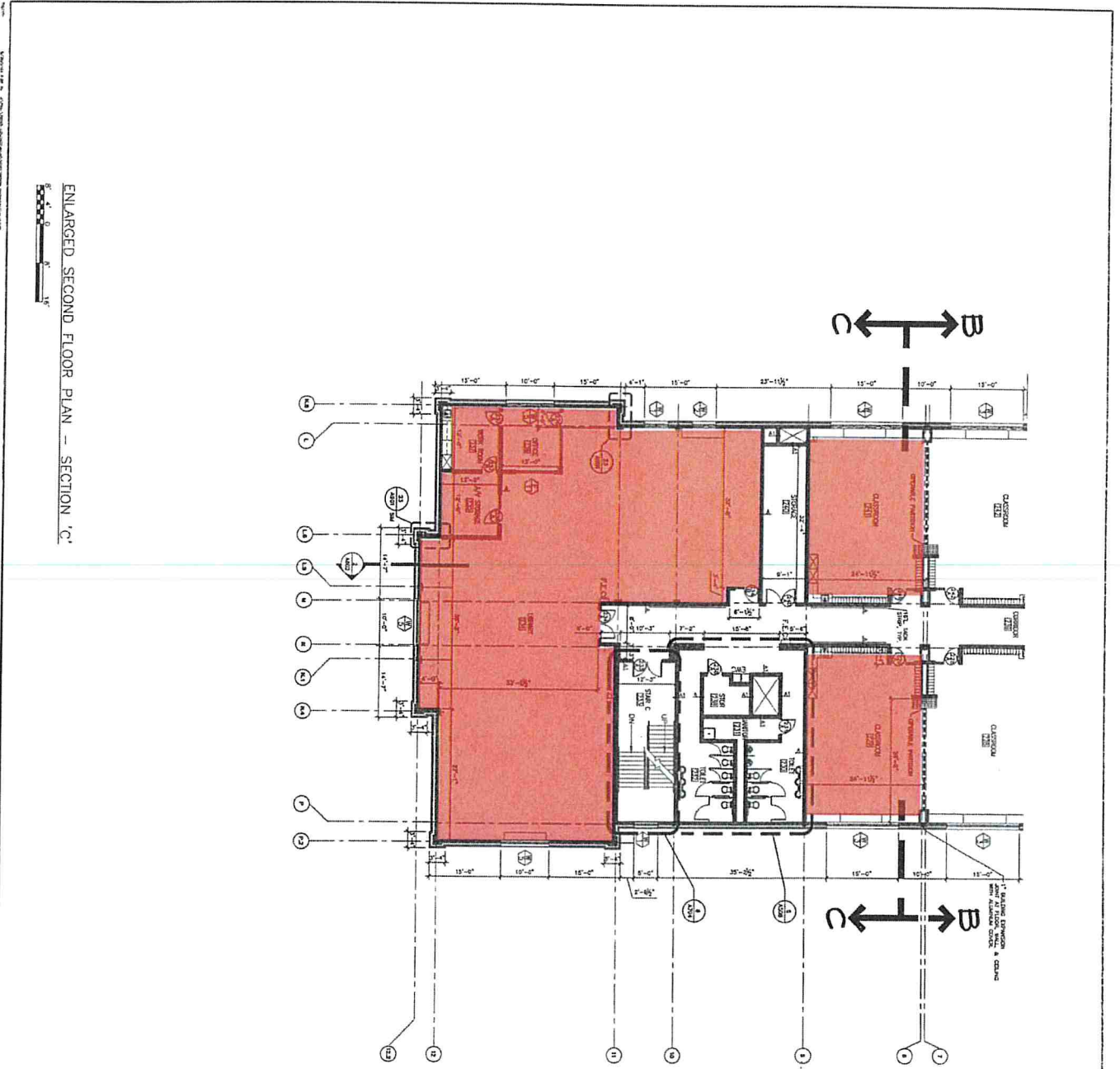
TYPE AND MULTI-PURPOSE GENERAL FIRE EXTINGUISHER IN TYPICAL CLASSROOM	57000
1st Fl. - 57000	
2nd Fl. - 57000	
3rd Fl. - 57000	

PROJECT NO.	1200-00
DATE	07/24/00
DESIGNED BY	ELIASH
CHECKED BY	ELIASH
DATE	07/24/00
PROJECT LOCATION	EAST STROUDSBURG AREA SCHOOL DISTRICT
PROJECT NAME	EAST STROUDSBURG ELEMENTARY SCHOOL
SHEET NO.	A-05

EAST STROUDSBURG AREA SCHOOL DISTRICT
EAST STROUDSBURG ELEMENTARY SCHOOL
 EAST STROUDSBURG, PENNSYLVANIA



BID DOCUMENTS

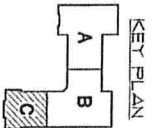


ENLARGED SECOND FLOOR PLAN - SECTION 'C'



- GENERAL NOTES**
1. FOR LARG SCALE ADMINISTRATION SUITE, SEE A401.
 2. FOR LARG SCALE NURSES SUITE, SEE A401.
 3. FOR LARG SCALE CHARTER LAYOUT, SEE A402.
 4. FOR LARG SCALE GYMNASIUM/ MULTI-PURPOSE ROOM LAYOUT, SEE A403.
 5. FOR LARG SCALE TYPICAL NONCOMPARTEMENT LAYOUT, SEE A404.
 6. FOR LARG SCALE TYPICAL CLASSROOM LAYOUT, SEE A404.
 7. FOR LARG SCALE TYPICAL SPECIAL EDUCATION CLASSROOM LAYOUT, SEE A404.
 8. FOR LARG SCALE LIBRARY LAYOUT, SEE A404.
 9. FOR LARG SCALE ART ROOM LAYOUT, SEE A404.
 10. FOR LARG SCALE MUSIC ROOM, SEE A404.
 11. FOR LARG SCALE COMPUTER LAB LAYOUT, SEE A404.
 12. FOR LARG SCALE TYPICAL LAB LAYOUT, SEE A407.
 13. FOR LARG SCALE TYPICAL SPECIAL EDUCATION CLASSROOM LAYOUT, SEE A404.
 14. FOR LARG SCALE TYPICAL ROOM LAYOUT, SEE A404.
 15. FOR WALL TILE LEGEND, SEE A101.

SEE EXHIBIT LEGEND
 THE LARG SCALE ADMINISTRATION SUITE
 EXTENDING IN NATLY RECESSITY CABINET



EAST STROUDSBURG AREA
 SCHOOL DISTRICT
**EAST STROUDSBURG
 ELEMENTARY SCHOOL**
 EAST STROUDSBURG, PENNSYLVANIA

NO.	REVISION	BY	DATE

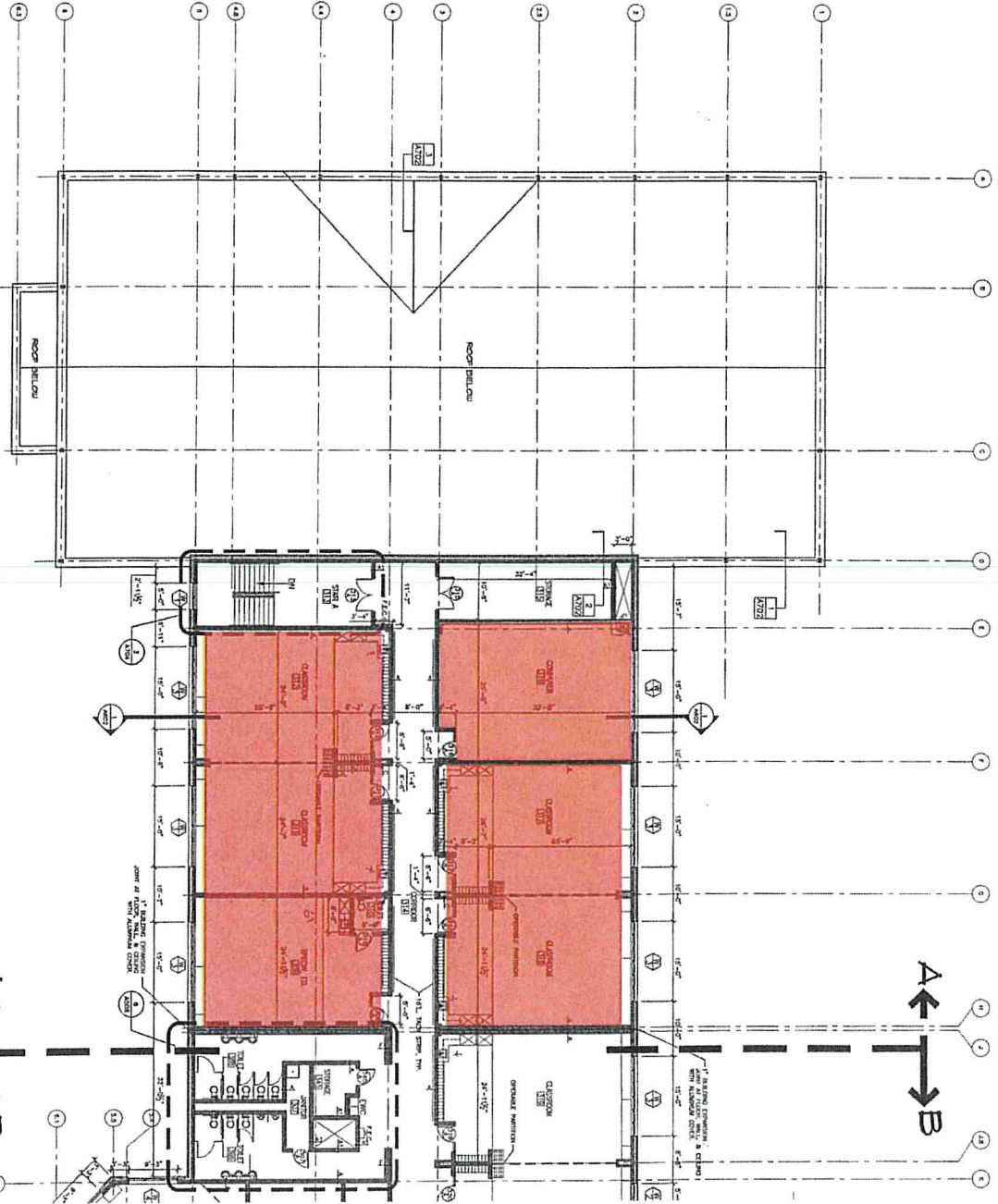


BRADCOFF ARCHITECTURE
 Engineers, Architects and Planners

ENLARGED
 SECOND
 FLOOR PLAN
 SECTION 'C'

A406

BID DOCUMENTS



ENLARGED THIRD FLOOR PLAN - SECTION 'A'

0 5 10

- GENERAL NOTES**
- FOR LARGE SCALE ADMINISTRATION SEE: SEE A501
 - FOR LARGE SCALE CHANGING ROOMS SEE: SEE A502
 - FOR LARGE SCALE COMPUTER LAB/LABORATORY ROOM LAYOUT SEE: SEE A503
 - FOR LARGE SCALE COMMUNITY HEALTH/FITNESS ROOM LAYOUT SEE: SEE A504
 - FOR LARGE SCALE SPECIAL EDUCATION LAYOUT SEE: SEE A505
 - FOR LARGE SCALE TYPICAL CLASSROOM LAYOUT SEE: SEE A506
 - FOR LARGE SCALE TYPICAL SPECIAL EDUCATION CLASSROOM LAYOUT SEE: SEE A507
 - FOR LARGE SCALE LIBRARY LAYOUT SEE: SEE A508
 - FOR LARGE SCALE MUSIC ROOM SEE: SEE A509
 - FOR LARGE SCALE ART ROOM SEE: SEE A510
 - FOR LARGE SCALE L.S.I. AND S.G.I. LAYOUT SEE: SEE A511
 - FOR LARGE SCALE COMPUTER LAB LAYOUT SEE: SEE A512
 - FOR LARGE SCALE TYPICAL SERVER ROOM SEE: SEE A513
 - FOR LARGE SCALE TYPICAL STORAGE ROOM SEE: SEE A514
 - FOR LARGE SCALE TYPICAL JANITORY SEE: SEE A515

ENCLOSURE LEGEND

TYPE AND MATERIAL FINISHES, COLORS, AND DIMENSIONS TO BE SHOWN AND NOTED



NO.	REVISION	DATE

EAST STROUDSBURG AREA SCHOOL DISTRICT

EAST STROUDSBURG ELEMENTARY SCHOOL

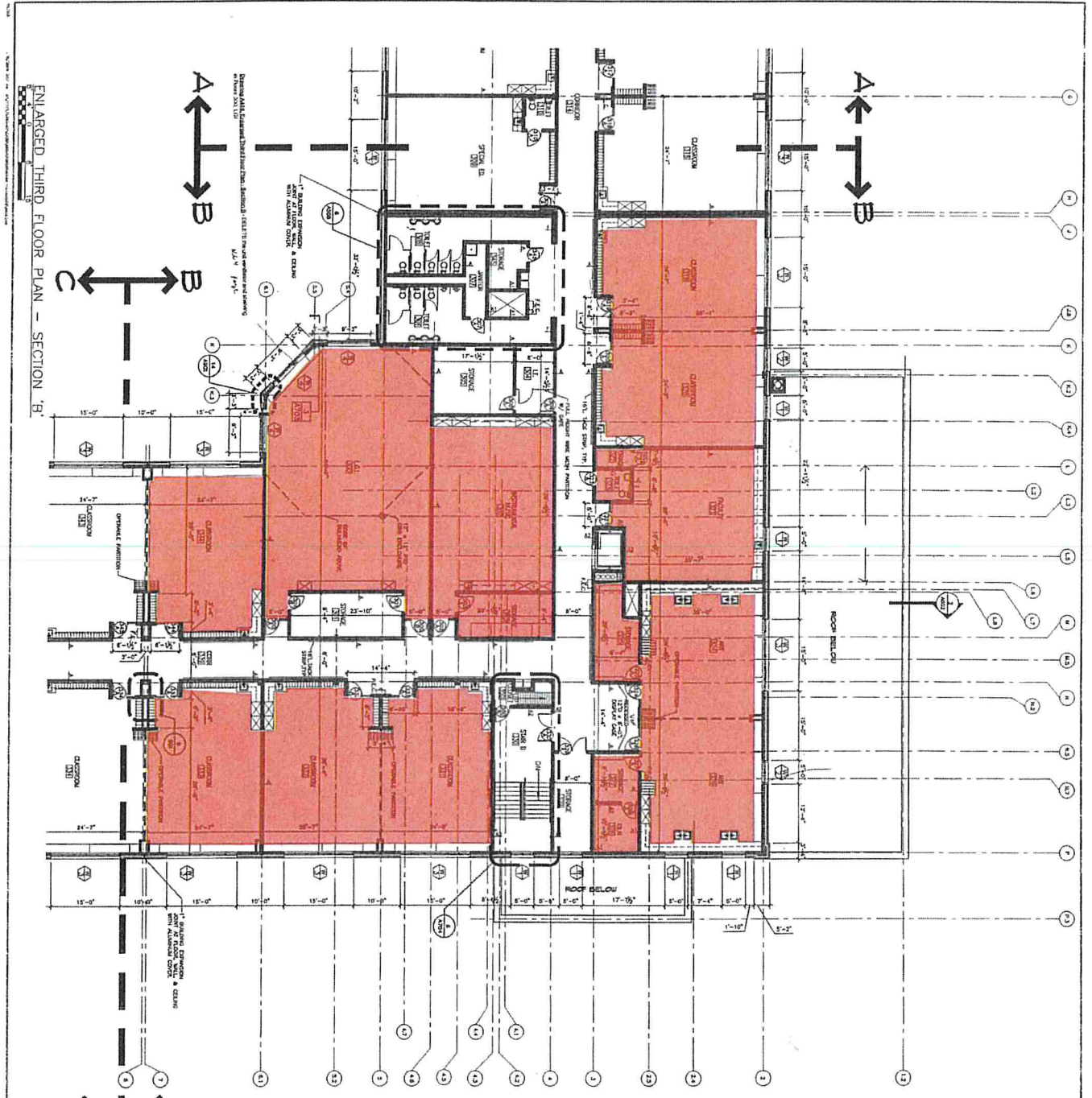
EAST STROUDSBURG, PENNSYLVANIA

DESIGNED	
DRAWN	
CHECKED	
DATE	

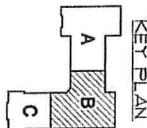


BID DOCUMENTS

A401



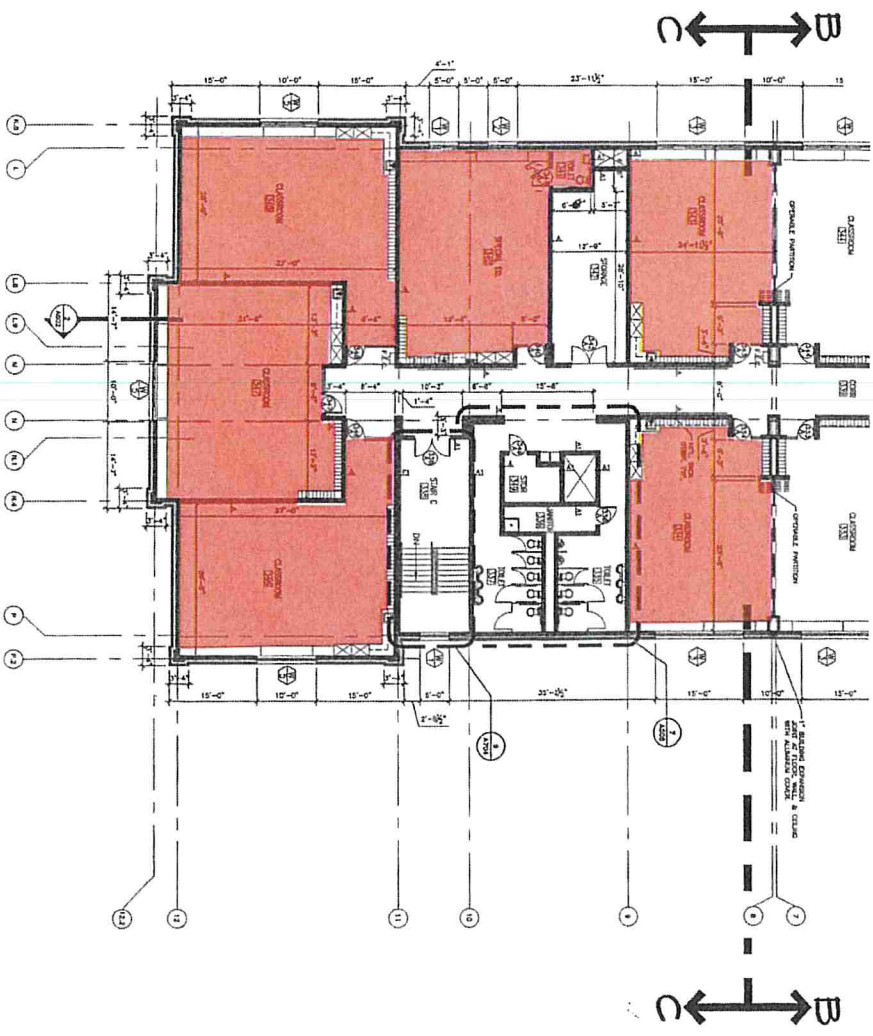
ENLARGED THIRD FLOOR PLAN - SECTION 'B'



- GENERAL NOTES**
1. FOR UNIFORM SCALE ADMINISTRATION SEE: SEE A501.
 2. FOR UNIFORM SCALE ELECTRICAL UNIFORM: SEE A502.
 3. FOR UNIFORM SCALE MECHANICAL/ VENTILATION ROOM UNIFORM: SEE A503.
 4. FOR UNIFORM SCALE PERIOD INTERCOMMUNICATION UNIFORM: SEE A504.
 5. FOR UNIFORM SCALE SPECIAL EDUCATION CLASSROOM UNIFORM: SEE A505.
 6. FOR UNIFORM SCALE UNIFORM UNIFORM: SEE A506.
 7. FOR UNIFORM SCALE MUSIC ROOMS: SEE A507.
 8. FOR UNIFORM SCALE LEBL AND SOL UNIFORM: SEE A508.
 9. FOR UNIFORM SCALE COMPUTER LAB UNIFORM: SEE A509.
 10. FOR UNIFORM SCALE IT SERVER ROOM: SEE A510.
 11. FOR UNIFORM SCALE TALKER ROOM UNIFORM: SEE A511.
 12. FOR UNIFORM SCALE TALKER ROOM UNIFORM: SEE A512.
 13. FOR UNIFORM SCALE TALKER ROOM UNIFORM: SEE A513.
 14. FOR UNIFORM SCALE TALKER ROOM UNIFORM: SEE A514.

SEE EXTINGUISHER LEGEND
 THIS ABC MULTI-PURPOSE CHEMICAL, FIRE EXTINGUISHER IN FULLY PROTECTED CABINET.

<p>EAST STROUDSBURG AREA SCHOOL DISTRICT EAST STROUDSBURG ELEMENTARY SCHOOL EAST STROUDSBURG, PENNSYLVANIA</p>			<p>HOK BASCO ASSOCIATES Engineers, Architects and Planners</p>
<p>ENLARGED THIRD FLOOR PLAN SECTION 'B'</p>		<p>PROJECT NO. 1523-00 DATE: 10/20/15 DESIGN BY: [Name] DRAWN BY: [Name] CHECKED BY: [Name] DATE: 10/20/15 SCALE: AS SHOWN SHEET TITLE: ENLARGED THIRD FLOOR PLAN SECTION 'B'</p>	

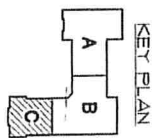


ENLARGED THIRD FLOOR PLAN - SECTION 'C'

GENERAL NOTES

1. FOR LARGE SCALE ADMINISTRATION SPACE, SEE A501.
2. FOR LARGE SCALE RECEPTION SPACE, SEE A502.
3. FOR LARGE SCALE OFFICE SPACE, SEE A503.
4. FOR LARGE SCALE CONFERENCE/ MULTI-PURPOSE ROOM LAYOUT, SEE A504.
5. FOR LARGE SCALE TYPICAL ADMINISTRATION LAYOUT, SEE A505.
6. FOR LARGE SCALE TYPICAL SPECIAL EDUCATION CLASSROOM LAYOUT, SEE A506.
7. FOR LARGE SCALE TYPICAL SPECIAL EDUCATION CLASSROOM LAYOUT, SEE A507.
8. FOR LARGE SCALE ART ROOM LAYOUT, SEE A508.
9. FOR LARGE SCALE MUSIC ROOM LAYOUT, SEE A509.
10. FOR LARGE SCALE T.C.I. AND S.C.I. LAYOUT, SEE A510.
11. FOR LARGE SCALE COMPUTER LAB LAYOUT, SEE A511.
12. FOR LARGE SCALE COMPUTER LAB LAYOUT, SEE A512.
13. FOR LARGE SCALE T.O.T. SPINNING ROOM, SEE A513.
14. FOR LARGE SCALE T.O.T. SPINNING ROOM, SEE A514.
15. FOR WALL TYPE LEGEND, SEE A101.

SEE ENLARGED LEGEND
TYPE ARE MULTI-PURPOSE CORRIDOR FOR EXTENSION IN FULLY RECESSED CORNER.



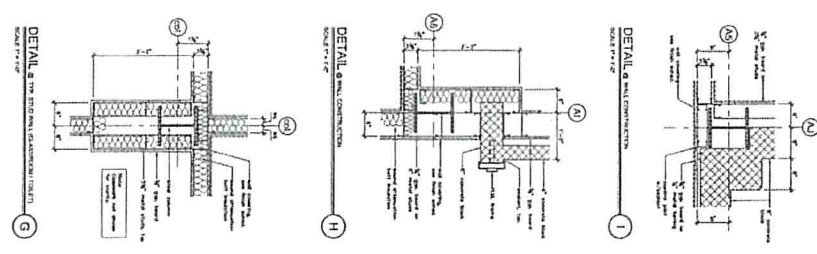
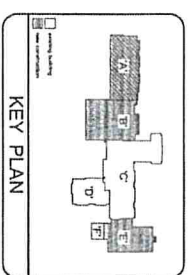
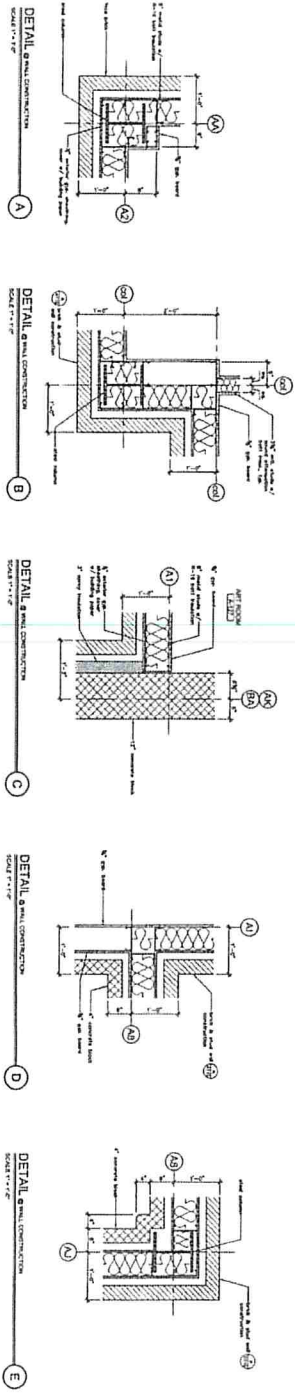
DESIGNED BY	DATE
DRAWN BY	DATE
CHECKED BY	DATE
PROJECT NO.	1033-00
DATE	
REVISION	

EAST STROUDSBURG AREA
SCHOOL DISTRICT
**EAST STROUDSBURG
ELEMENTARY SCHOOL**
EAST STROUDSBURG, PENNSYLVANIA



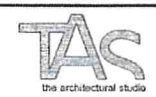
VI. B. 2.

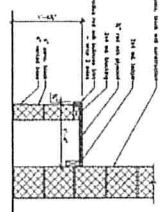
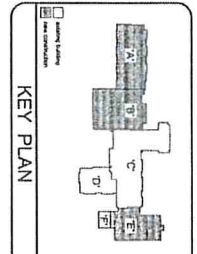
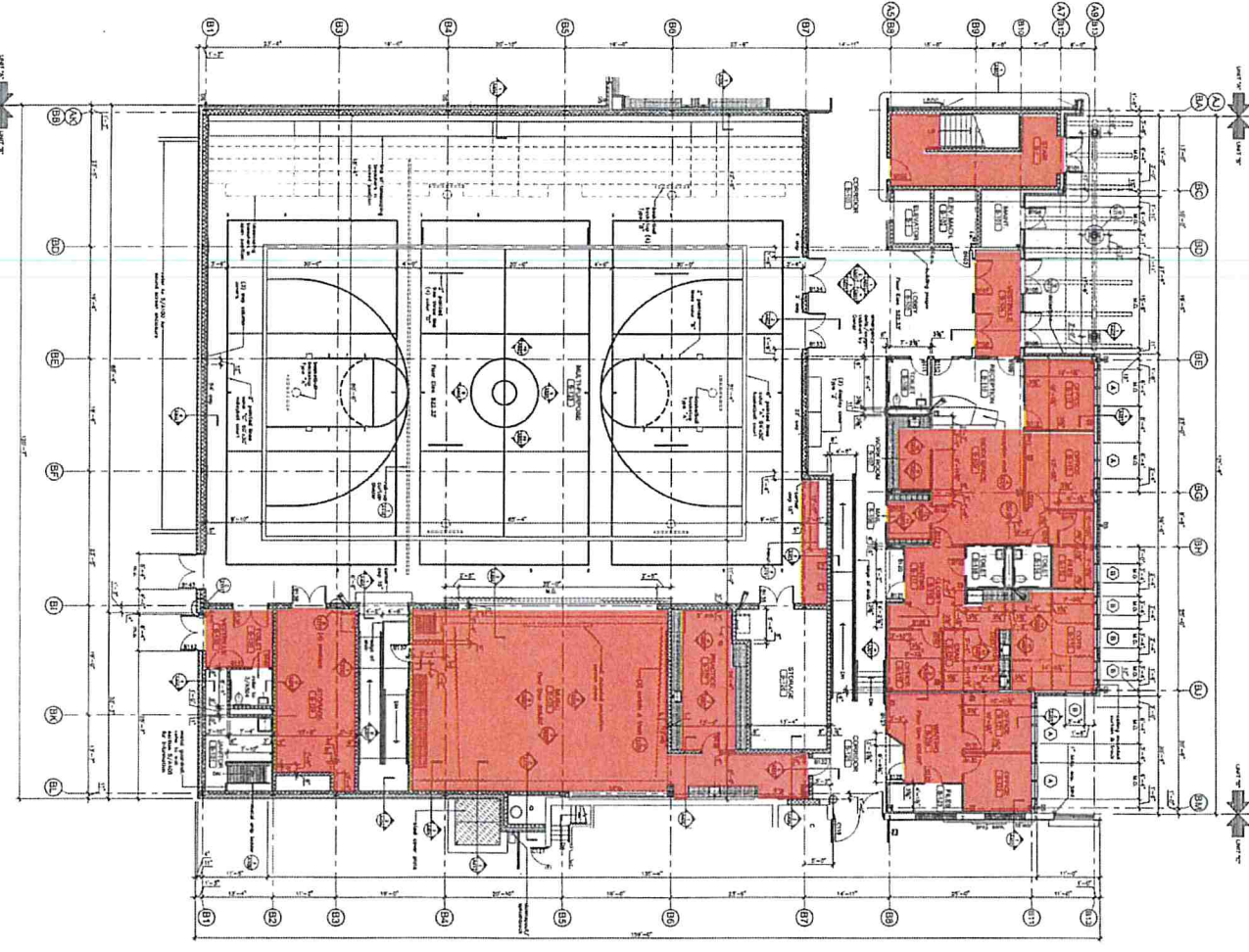
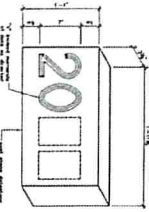
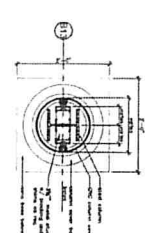
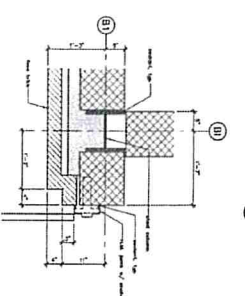
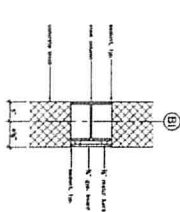
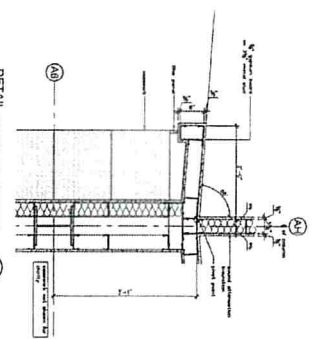
VI. B. 2.



Additions & Alterations to:
MIDDLE SMITHFIELD ELEMENTARY SCHOOL
EAST STROUDSBURG AREA SCHOOL DISTRICT
 5180 Milford Road, Middle Smithfield Township, Monroe County
 East Stroudsburg, Pennsylvania 18301

Unit "A"
FIRST FLOOR PLAN



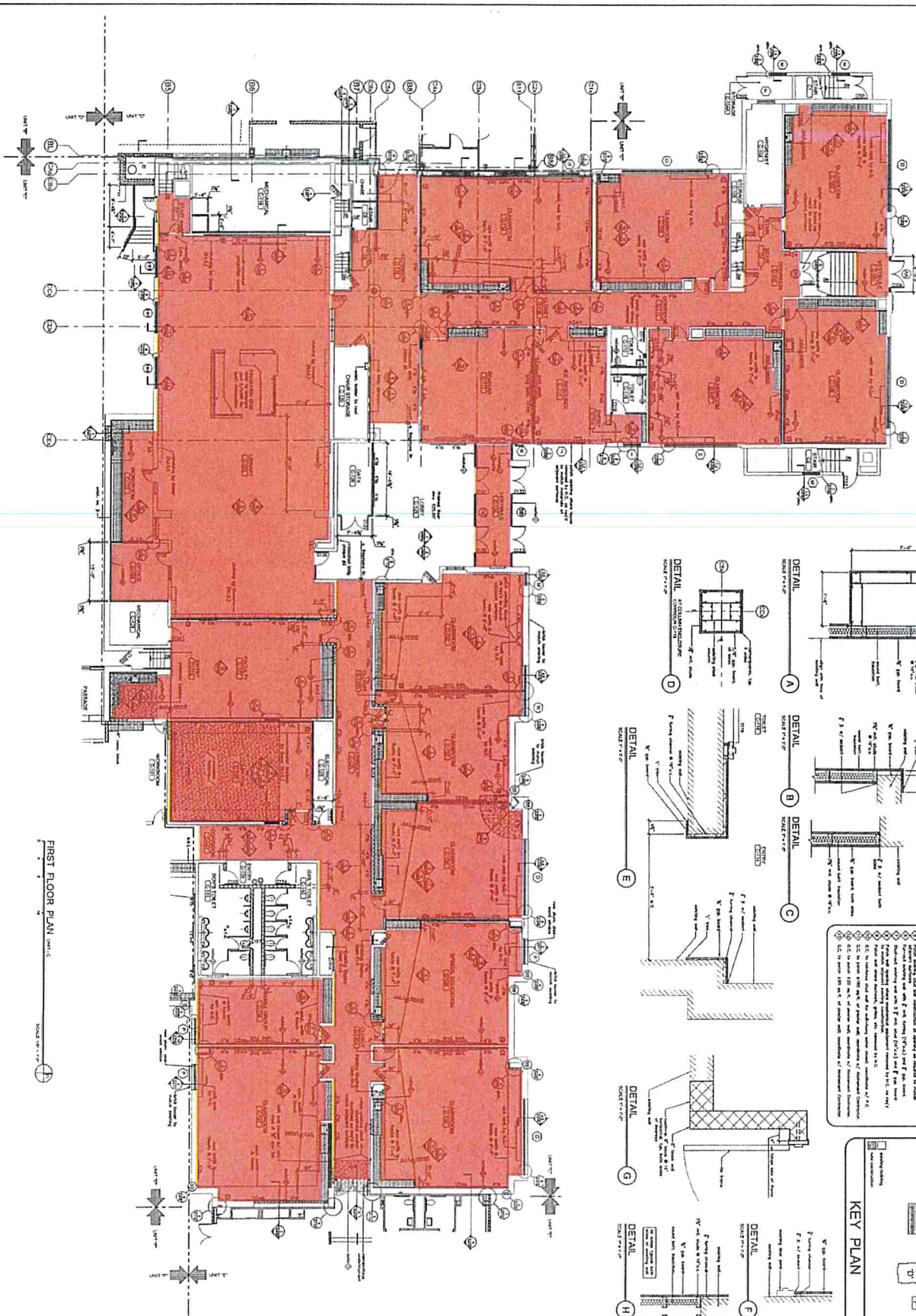


Additions & Alterations to:
MIDDLE SMITHFIELD ELEMENTARY SCHOOL
EAST STROUDSBURG AREA SCHOOL DISTRICT
 5180 Milford Road, Middle Smithfield Township, Monroe County
 East Stroudsburg, Pennsylvania 18301

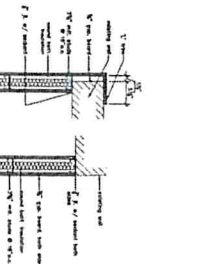
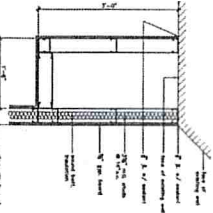
Unit "B"
FIRST FLOOR PLAN



SCALE: AS SHOWN
 DATE: 03/17/08



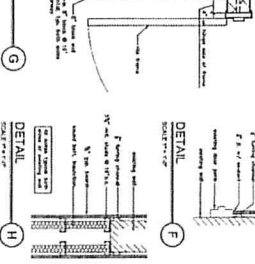
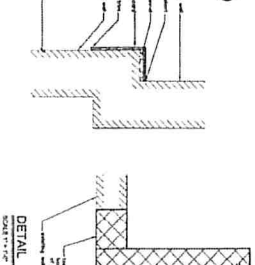
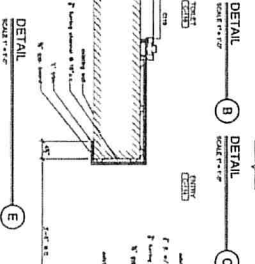
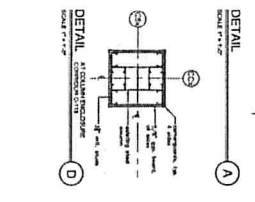
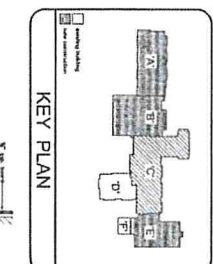
FIRST FLOOR PLAN UNIT C
SCALE 1/8" = 1'-0"

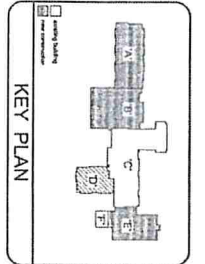
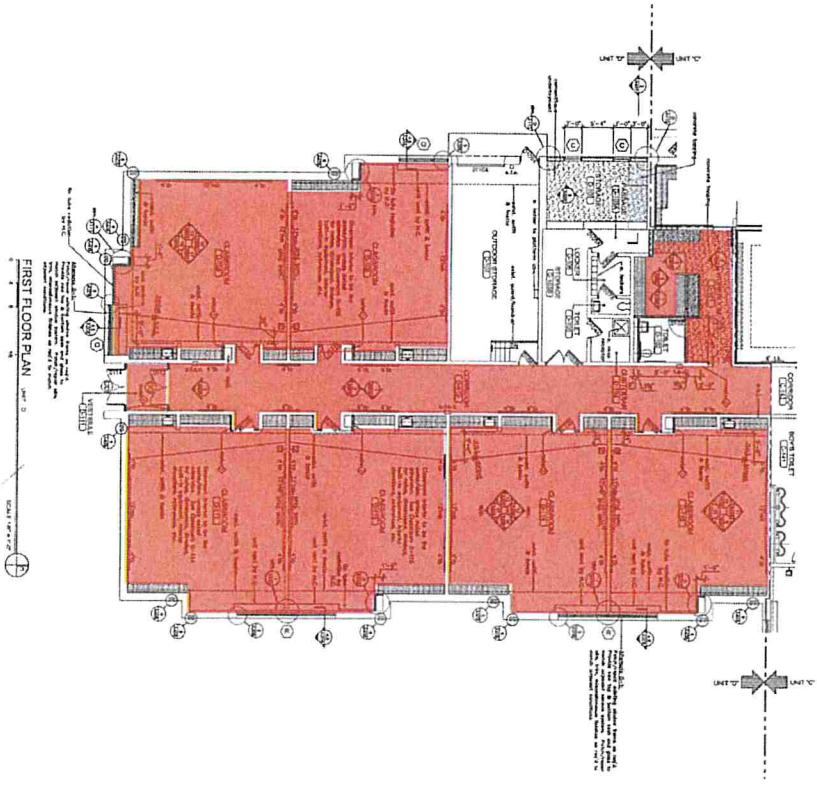
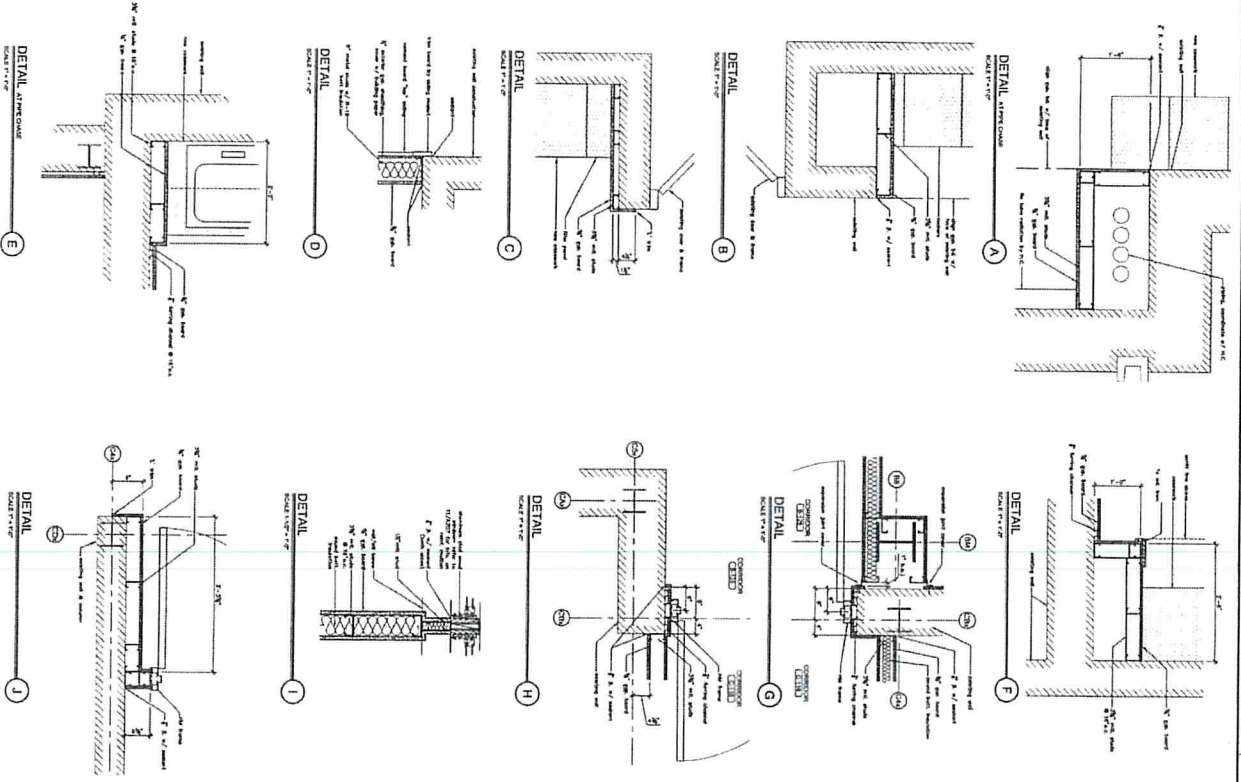


CONSTRUCTION NOTES

1. All work shall be in accordance with the latest editions of the following codes and standards:

- International Building Code (IBC)
- International Residential Code (IRC)
- International Mechanical Code (IMC)
- International Plumbing Code (IPC)
- International Fire Code (IFC)
- International Electrical Code (IEC)
- International Energy Conservation Code (IECC)
- International Fire and Building Code (IFBC)
- International Fire and Building Code (IFBC)
- International Fire and Building Code (IFBC)
- International Fire and Building Code (IFBC)

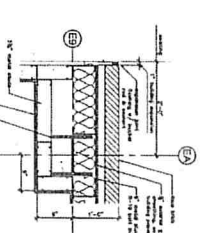
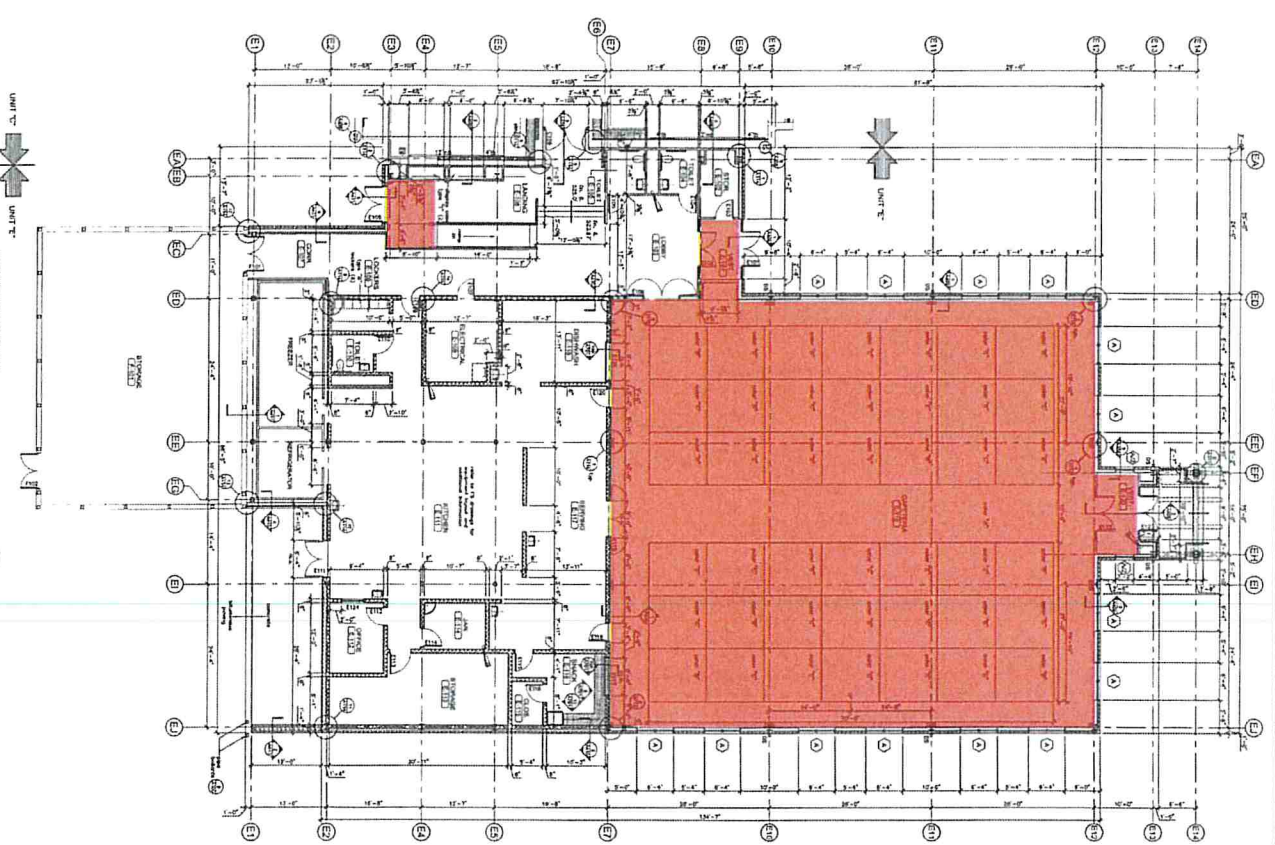




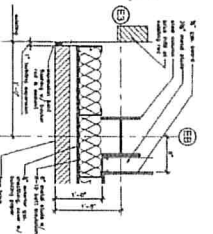
- CONSTRUCTION NOTES**
1. See General Notes for details.
 2. See General Notes for details.
 3. See General Notes for details.
 4. See General Notes for details.
 5. See General Notes for details.
 6. See General Notes for details.
 7. See General Notes for details.
 8. See General Notes for details.
 9. See General Notes for details.
 10. See General Notes for details.



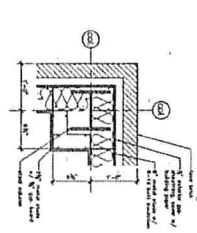
FIRST FLOOR PLAN
SCALE: 1/8" = 1'-0"



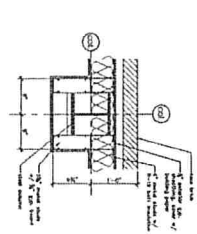
DETAIL 1
SCALE: 1/4" = 1'-0"



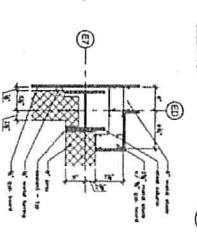
DETAIL 2
SCALE: 1/4" = 1'-0"



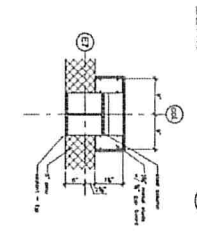
DETAIL 3
SCALE: 1/4" = 1'-0"



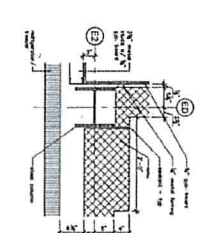
DETAIL 4
SCALE: 1/4" = 1'-0"



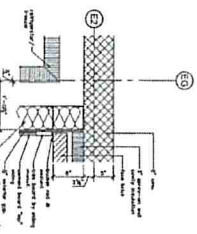
DETAIL 5
SCALE: 1/4" = 1'-0"



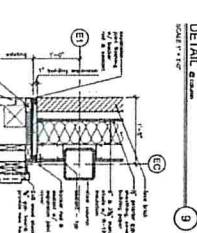
DETAIL 6
SCALE: 1/4" = 1'-0"



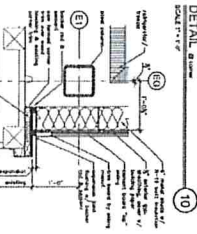
DETAIL 7
SCALE: 1/4" = 1'-0"



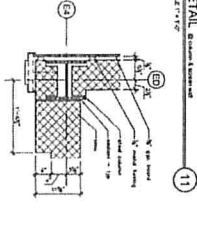
DETAIL 8
SCALE: 1/4" = 1'-0"



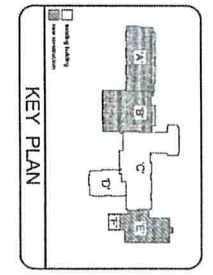
DETAIL 9
SCALE: 1/4" = 1'-0"



DETAIL 10
SCALE: 1/4" = 1'-0"



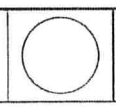
DETAIL 11
SCALE: 1/4" = 1'-0"



KEY PLAN

Units "E" & "F"
FIRST FLOOR PLAN

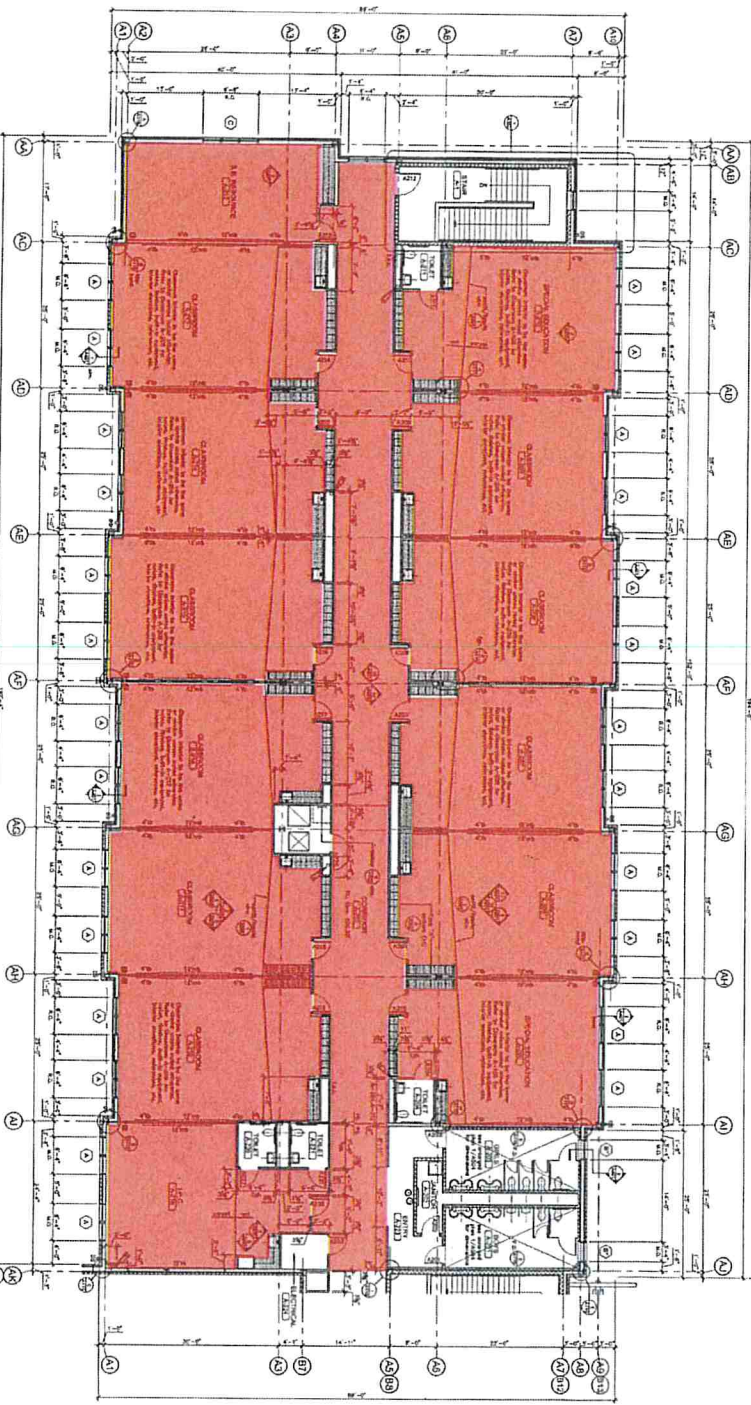
Additions & Alterations to:
MIDDLE SMITHFIELD ELEMENTARY SCHOOL
EAST STROUDSBURG AREA SCHOOL DISTRICT
5180 Milford Road, Middle Smithfield Township, Monroe County
East Stroudsburg, Pennsylvania 18301



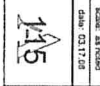
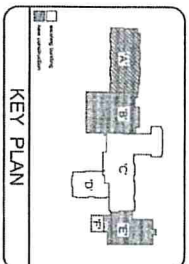
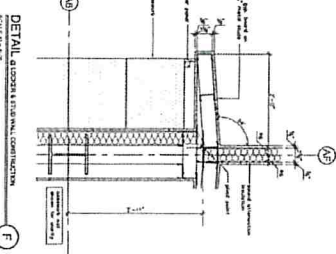
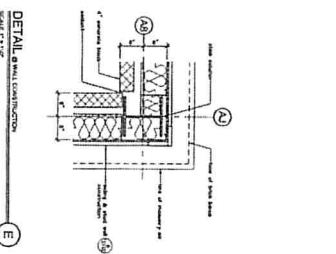
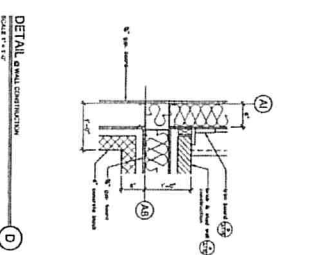
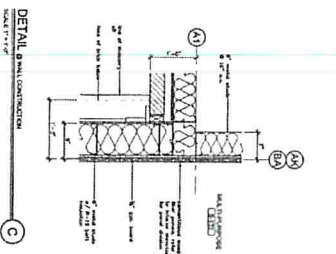
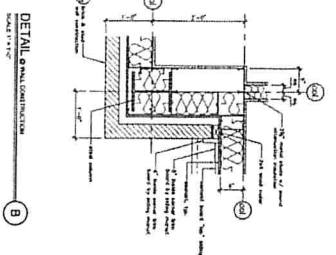
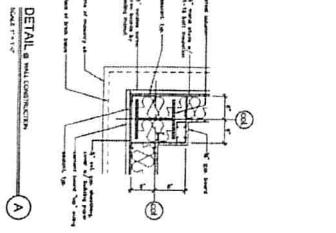
TAC
the architectural studio



SCALE: 1/8" = 1'-0"



SECOND FLOOR PLAN UNIT "A"



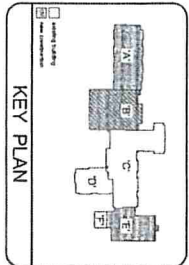
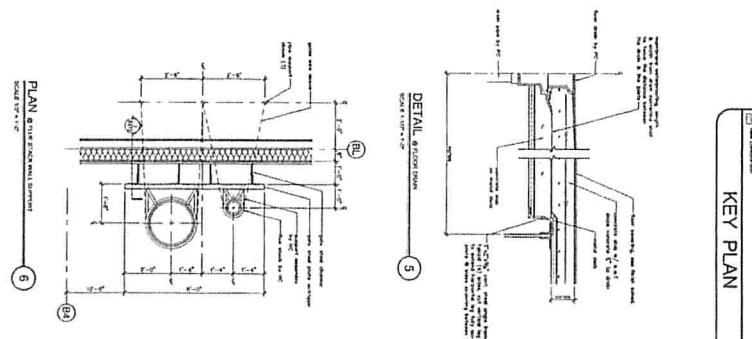
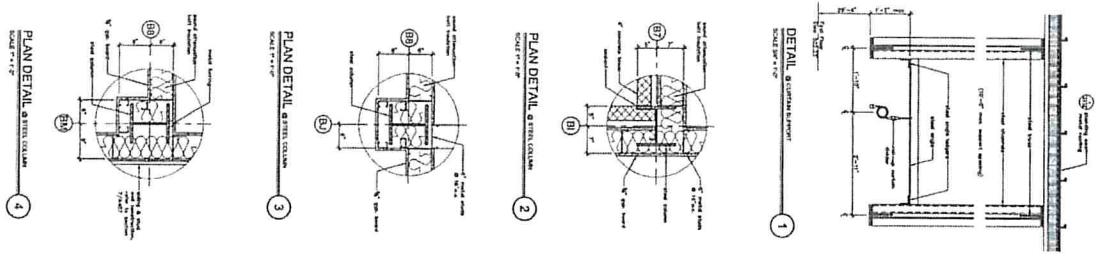
Unit "A"
SECOND FLOOR PLAN

Additions & Alterations to:
MIDDLE SMITHFIELD ELEMENTARY SCHOOL
EAST STROUDSBURG AREA SCHOOL DISTRICT
5180 Milford Road, Middle Smithfield Township, Monroe County
East Stroudsburg, Pennsylvania 18301



THE ARCHITECTURAL STUDIO
1500 N. MARKET STREET
STATE COLLEGE, PA 16801
TEL: 717/339-1177
FAX: 717/339-1178
WWW.TAC-PA.COM

TAC
the architectural studio



SCALE: 1/8" = 1'-0"

Unit 'B'
SECOND FLOOR PLAN

Additions & Alterations to:
MIDDLE SMITHFIELD ELEMENTARY SCHOOL
EAST STROUDSBURG AREA SCHOOL DISTRICT
5180 Milford Road, Middle Smithfield Township, Monroe County
East Stroudsburg, Pennsylvania 18301

DATE: 03/17/08

SCALE: 1/8" = 1'-0"

PROJECT NO. 08-001

DATE: 03/17/08

SCALE: 1/8" = 1'-0"

PROJECT NO. 08-001

DATE: 03/17/08

SCALE: 1/8" = 1'-0"

PROJECT NO. 08-001

DATE: 03/17/08

SCALE: 1/8" = 1'-0"

PROJECT NO. 08-001

DATE: 03/17/08

SCALE: 1/8" = 1'-0"

PROJECT NO. 08-001

DATE: 03/17/08

V1.C.1

Change Order

No. 1

Date of Issuance: 9/27/23 Effective Date: _____

Project: H.S. South Flooring Replacement	Owner: East Stroudsburg Area School District	Owner's Contract No.:
Contract: General Construction		Date of Contract:
Contractor: Cope Commercial Flooring		Engineer's Project No.: 287038

The Contract Documents are modified as follows upon execution of this Change Order:

Description: Credit change order for unused project allowance.

Attachments: (List documents supporting change):

CHANGE IN CONTRACT PRICE:

CHANGE IN CONTRACT TIMES:

Original Contract Price: \$ <u>1,224,395.00</u>	Original Contract Times: <input type="checkbox"/> Working days <input type="checkbox"/> Calendar days Substantial completion (days or date): _____ Ready for final payment (days or date): _____
--	--

[Increase] [Decrease] from previously approved Change Orders No. _____ to No. _____: \$ <u>N/A</u>	[Increase] [Decrease] from previously approved Change Orders No. _____ to No. _____: Substantial completion (days): _____ Ready for final payment (days): _____
---	---

Contract Price prior to this Change Order: \$ <u>1,224,395.00</u>	Contract Times prior to this Change Order: Substantial completion (days or date): _____ Ready for final payment (days or date): _____
--	---

[Increase] [Decrease] of this Change Order: \$ <u>52,930.40</u>	[Increase] [Decrease] of this Change Order: Substantial completion (days or date): _____ Ready for final payment (days or date): _____
---	--

Contract Price incorporating this Change Order: \$ <u>1,171,464.60</u>	Contract Times with all approved Change Orders: Substantial completion (days or date): _____ Ready for final payment (days or date): _____
---	--

RECOMMENDED: By: <u>Josh Grice</u> Engineer (Authorized Signature)	ACCEPTED: By: _____ Owner (Authorized Signature)	ACCEPTED: By: _____ Contractor (Authorized Signature)
Date: <u>9/27/23</u>	Date: _____	Date: _____
Approved by Funding Agency (if applicable): _____	Date: _____	



COMMERCIAL FLOORING AND INTERIORS, INC.

PO Box 90279, Allentown, PA 18109-0279
Phone 610-435-1131 Fax: 610-432-1121

V.I.D.1

INVOICE # 56702

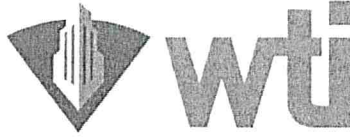
TO: ESASD
50 EAST VINE STREET
EAST STROUDSBURG PA 18301

Date: 9/27/2023

SALESPERSON	JOB	PAYMENT TERMS	DUE DATE
LORIE		Net 30	10/27/23

QTY	DESCRIPTION	UNIT PRICE	LINE TOTAL
	Project: JT LAMBERT AUDITORIUM 2005 MILFORD ROAD EAST STROUDSBURG PA 18301		
	CO #1 Furnished Accessories		\$ 6,644.00
SUBTOTAL			\$6644.00
SALES TAX			
TOTAL			\$6644.00

Make all checks payable to Cope Commercial Flooring and Interiors, Inc.
THANK YOU FOR YOUR BUSINESS!



V.I.E.1

Weatherproofing Technologies, Inc.

PROJECT:

5050562 - East Stroudsburg Area SD - SMITHFIELD ES - ROOF
REPLACEMENT
245 RIVER ROAD
EAST STROUDSBURG, PA 18301

OWNER CHANGE ORDER

Change Order #: 1

Initiation Date: 09/26/2023

To Owner: East Stroudsburg School District
Address: 50 VINE STREET
EAST STROUDSBURG PA 18301

Contract/PO Date: 07.07.2023

Contract/PO#: 35050562 PO #: 23000294

The following is a change from the original scope of work for the above referenced job:

Scope Change Detail	\$ Amount
Unused Roof Deck Replacement (500 sqft)	-\$3,856.95
TOTAL	(\$3,856.95)

The original Contract Sum was	\$1,862,357.67
Net change by previously authorized Change Orders	\$ 0.00
The Contract Sum prior to this Change Order was	\$1,862,357.67
The amount Contract Sum will be adjusted by this Change Order in the amount of	-\$3,856.95
The new Contract Sum, including this Change Order, will be	\$1,858,500.72
The Contract Time could be increased by (working days)	0
The Date of Substantial Completion as of the date of this Change Order, therefore, is	

APPROVED BY:

Weatherproofing Technologies, Inc.

Owner:

Signature: _____

Signature: _____

Print Name: _____

Print Name: _____

Date: _____

Date: _____

VII.C.1

Proposed to Committee					
Building	Project	Status	Estimated Cost	Approved Cost	Notes
East Stroussburg Elementary School	Flooring replacement	will be presented to P&F on 10/4/23	\$571,780.00		directed by P&F committee on 9/16/23 to get cost analysis from DHuy
Middle Smithfield Elementary School	Flooring replacement	will be presented to P&F on 10/4/23	\$614,690.00		directed by P&F committee on 9/16/23 to get cost analysis from DHuy
JM Hill Elementary School	Original Hardwood flooring sand/refinish	will be presented to P&F on 10/4/23	\$120,000.00		
High School South	Auditorium Painting	in process of meeting with vendors			This project is to paint the ceiling and flooring in between and under the chairs
High School South	Stadium Upgrades	DHuy will present findings to P&F on 10/4/23			last presented to P&F February of 2023
High School South	Boiler Replacement	waiting on cost analysis	\$100,000.00		DHuy Engineering
RES/BES/JTL	Tennis Courts Repairs	waiting on cost analysis	\$18,000.00		DHuy Engineering
North Bus Lot	Wallpaper removal and paint	in process of meeting with vendors			wallpaper removal, patch work, and paint in office suites
District	Bldg Enhancements	waiting on specifics and cost analysis			
District	Paving/Sealcoating	in process of meeting with vendors	\$30,000.00		multiple parking lots being inspected in order to prioritize
District	Generators Repairs	waiting on cost analysis	\$1,454,470.00		DHuy Engineering
TOTAL ESTIMATED COST					
TOTAL APPROVED COST				\$0.00	

Approved by Committee					
Building	Project	Status	Estimated Cost	Approved Cost	Notes
High School North	Aux Gym Sand and Refinish	approved by full board 9/18/23		\$18,207.00	Wayfare Sports Flooring
Lehman Intermediate School	Aux Gym Sand and Refinish	approved by full board 9/18/23		\$17,840.00	Wayfare Sports Flooring
JTL Intermediate School	Aux Gym Sand and Refinish	approved by full board 9/18/23		\$12,789.00	Wayfare Sports Flooring
RES	HVAC Improvements	approved by full board		\$1,546,750.00	partial ESSERS
HSN/HIS	Rooftop Equipment Replacement	approved by full board		\$2,530,135.00	partial ESSERS
TOTAL ESTIMATED COST			\$0.00		
TOTAL APPROVED COST				\$4,125,721.00	

Current Construction in Progress 7/27/2023

		\$	-		\$	-		\$	14,466.70

Current Construction in Progress 7/27/2023

	\$	60,403.63		\$	28,848.16		\$	-

	\$	18,440.66				

Date	RES Elem HVAC Improvements ESSER III 10-4600-450-990-10-215- 461-000-8744 \$1,500,000.00 ESSER ONLY Remaining out of Capital Reserve A/C#32-4600-450- 000-10-215-000-000-3051	Date	EHN Rooftop HVAC ESSER III 10-4600-450-990-30-819- 461-000-8744 \$3,539,010.00 ESSER ONLY ??? Remaining out of Capital Reserve A/C 32-4600-450-000-000-30- 819-000-000-3051	Date	EHS Flooring Replacment Board Approved 3/20/2023 32-4600-450-000-30-820- 000-000-3080
	Trane \$ 1,500,000.00		Trane \$ 3,539,010.00	6554	Cope Commercial Flooring \$ 1,224,395.00
	\$ 1,500,000.00		\$ 3,539,010.00		\$ 1,224,395.00
ACH Tranf	\$ 1,500,000.00	ACH Tranf	\$ 2,530,135.00		
	\$ -		\$ -	5/31/2023	\$ 433,595.70
				6/26/2023	\$ 283,535.10
				8/31/2023	\$ 73,972.80
				8/31/2023	\$ 249,020.10
				9/22/2023	\$ 14,194.44
	\$ 1,500,000.00		\$ 2,530,135.00		\$ 1,054,318.14
	\$ -		\$ 1,008,875.00		\$ 170,076.86
	100%		71%		86%
ACH Tranf/Trane	\$ 46,750.00			11/14/222	\$ 6,828.00
				12/31/2022	\$ 241.15
				12/31/2022	\$ 2,115.75
				2/27/2023	\$ 9,018.10
				4/4/2023	\$ 6,825.00
				4/21/2023	\$ 1,515.15
				6/26/2023	\$ 2,793.87
				6/26/2023	\$ 8,381.62
				9/22/2023	\$ 4,604.31

	\$	46,750.00		\$	-		

Date		Vestibule Project Board Approved 4/17/2023 10-4600-450-000-00-000- 000-000-3082		Date		JTL Auditorium Ceiling Repaint Board Approved 4/17/2023 32-4600-431-000-20-517- 000-000-3095 Completed 6-27-23		Date		EHN R-Newals (Chiller) A/C# 32-4600-450-000-30- 819-008-000-3096 Board Approved 8/21/2023	
4407	Keystone Fire & Seurity	5285	Pocono Painting	3181	Trane						
	\$ 72,535.00		\$ 17,590.00		\$ 194,977.50						
	\$ 72,535.00		\$ 17,590.00		\$ 194,977.50						
		7/20/2023	\$ 17,590.00								
	\$ -		\$ 17,590.00		\$ -						
	\$ 72,535.00		\$ -								
	0%		100%		0%						

<p>EHN R-Newals (Chiller) A/C# 32-4600-450-000-20- 518-008-000-3096 Board Approved 8/21/2023</p>	<p>Total of Current Projects</p>	
<p>Trane</p>		
<p>\$ 194,977.50</p>	<p>\$ 13,763,173.67</p>	
	<p>\$ 20,040.00</p>	
	<p>\$ (3,367.00)</p>	
	<p>\$ -</p>	
<p>\$ 194,977.50</p>	<p>\$ -</p>	<p>\$ 13,779,846.67</p>
	<p>\$ 4,049,906.00</p>	
	<p>\$ 1,140,288.96</p>	
	<p>#REF!</p>	
	<p>\$ 1,626,701.92</p>	
	<p>\$ 1,197,400.60</p>	
	<p>\$ 864,373.88</p>	
	<p>\$ 293,148.00</p>	
	<p>#REF!</p>	
	<p>\$ 294,966.00</p>	
	<p>\$ 194,966.00</p>	
	<p>\$ -</p>	
	<p>\$ -</p>	
	<p>\$ -</p>	
	<p>\$ -</p>	
	<p>\$ -</p>	
	<p>\$ -</p>	
<p>\$ -</p>	<p>\$ 11,331,998.73</p>	<p>\$ 13,779,846.67</p>
	<p>\$ 2,447,847.94</p>	
<p>0%</p>	<p>82%</p>	
	<p>\$ 90,415.50</p>	
	<p>\$ 23,689.40</p>	
	<p>\$ 26,387.12</p>	
	<p>\$ 24,110.70</p>	
	<p>\$ 24,183.56</p>	
	<p>\$ 22,743.54</p>	
	<p>\$ 13,056.60</p>	
	<p>\$ 13,573.92</p>	
	<p>\$ 14,178.40</p>	
	<p>\$ 6,913.54</p>	
	<p>\$ 720.05</p>	
	<p>\$ 1,102.21</p>	
	<p>\$ 451.93</p>	
	<p>\$ 631.46</p>	
	<p>\$ 1,566.27</p>	
	<p>\$ -</p>	
	<p>\$ -</p>	
	<p>\$ -</p>	
	<p>\$ -</p>	
	<p>\$ -</p>	
<p>\$ -</p>	<p>\$ -</p>	

	\$	168,909.15	