

V.I.A.I



**D/HUY Engineering, Inc.**  
One East Broad Street, Suite 310 Bethlehem, PA 18018  
Phone: 610.865.3000 Fax: 610.861.0181

**INVOICE**

No. 50476  
11/29/2019

**East Stroudsburg Area School District**

60 Vine Street  
East Stroudsburg, PA 18301  
Mr. Tom McIntyre

**High School North & Lehman I.S. Water Heater Replacement**  
**287014**  
For Services Rendered From October 28, 2019 To November 29, 2019  
  
DEI Fee = \$22,525 (\$2,500 + 7.5% of Construction Cost \$267,000)

**00 - Basic Services**

<u>Contract Amount</u>	<u>Previously Billed</u>	<u>% Complete</u>	<u>Invoice Amount</u>
\$22,525.00	\$22,366.24	100.00	\$158.76

**Reimb - Reimbursable Expenses**

**Reimbursables**

	<u>Unit Rate</u>	<u>Qty</u>	<u>Markup</u>	<u>Amount</u>
Reimbursable Fees Commonwealth of Pennsylvania - Boiler Industrial Board Petition	332.65	1.00	1.00	\$332.65
<b>Total Reimbursables for Reimb</b>				<b>\$332.65</b>
<b>Total Charges for Reimb</b>				<b>\$332.65</b>

**INVOICE TOTAL \$491.41**

V.I.A.2



**D'HUY Engineering, Inc.**  
One East Broad Street, Suite 310 Bethlehem, PA 18018  
Phone: 610.865.3000 Fax: 610.861.0181

**INVOICE**  
No. 52064  
11/27/2020

**East Stroudsburg Area School District**

50 Vine Street  
East Stroudsburg, PA 18301  
Mr. Tom McIntyre

**Lehman I.S. & Bushkill E.S. Flooring Replacement**  
**287026**  
For Services Rendered From October 31, 2020 To November 27, 2020  
DEI Estimated Fee: 7% of \$600,000 = \$42,000

**00 - Basic Services**

Contract Amount	Previously Billed	% Complete	Invoice Amount
\$42,000.00	\$665.03	10.00	\$3,534.97

**INVOICE TOTAL \$3,534.97**

**Prior Billing Information**

Invoice		0 - 30	31 - 60	61-90	Over 90	Balance
51921	10/30/2020	\$665.03	\$0.00	\$0.00	\$0.00	\$665.03
<b>Total Prior Billing</b>		<b>\$665.03</b>	<b>\$0.00</b>	<b>\$0.00</b>	<b>\$0.00</b>	<b>\$665.03</b>

V.I.A.3



**D'HUY Engineering, Inc.**  
One East Broad Street, Suite 310 Bethlehem, PA 18018  
Phone: 610.865.3000 Fax: 610.861.0181

**INVOICE**

No. 52326  
01/29/2021

**East Stroudsburg Area School District**

50 Vine Street  
East Stroudsburg, PA 18301  
Mr. Tom McIntyre

**J.M. Hill Entrance Vestibule Renovation**  
**287028**  
For Services Rendered From January 01, 2021 To January 28, 2021  
DEI Estimated Fee: \$2,500 + 7.5% of \$150,000 = \$13,750

**00 - Basic Services**

<u>Contract Amount</u>	<u>Previously Billed</u>	<u>% Complete</u>	<u>Invoice Amount</u>
\$13,750.00	\$5,079.39	49.40	\$1,712.75

**INVOICE TOTAL    \$1,712.75**

**Prior Billing Information**

<u>Invoice</u>	<u></u>	<u>0 - 30</u>	<u>31 - 60</u>	<u>61-90</u>	<u>Over 90</u>	<u>Balance</u>
52066	11/27/2020	\$0.00	\$599.38	\$0.00	\$0.00	\$599.38
52149	12/31/2020	\$4,480.01	\$0.00	\$0.00	\$0.00	\$4,480.01
<b>Total Prior Billing</b>		<b>\$4,480.01</b>	<b>\$599.38</b>	<b>\$0.00</b>	<b>\$0.00</b>	<b>\$5,079.39</b>

V.I.A.4



**D'HUY Engineering, Inc.**  
One East Broad Street, Suite 310 Bethlehem, PA 18018  
Phone: 610.865.3000 Fax: 610.861.0181

**INVOICE**  
No. 52323  
01/29/2021

**East Stroudsburg Area School District**

50 Vine Street  
East Stroudsburg, PA 18301  
Mr. Tom McIntyre

**Transportation Building Underground Storage Tank Removal  
287023**

For Services Rendered From January 01, 2021 To January 29, 2021

DEI Fee = \$10,862.50 (7.5% of Construction Cost \$111,500.00 + \$2,500)

**00 - Basic Services**

Contract Amount	Previously Billed	% Complete	Invoice Amount
\$13,750.00	\$12,375.00	100.00	\$1,375.00

**INVOICE TOTAL \$1,375.00**

**Prior Billing Information**

Invoice		0 - 30	31 - 60	61-90	Over 90	Balance
51738	9/25/2020	\$0.00	\$0.00	\$0.00	\$4,639.55	\$4,639.55
52063	11/27/2020	\$0.00	\$1,258.30	\$0.00	\$0.00	\$1,258.30
52145	12/31/2020	\$3,437.50	\$0.00	\$0.00	\$0.00	\$3,437.50
<b>Total Prior Billing</b>		<b>\$3,437.50</b>	<b>\$1,258.30</b>	<b>\$0.00</b>	<b>\$4,639.55</b>	<b>\$9,335.35</b>

V.I.B.1

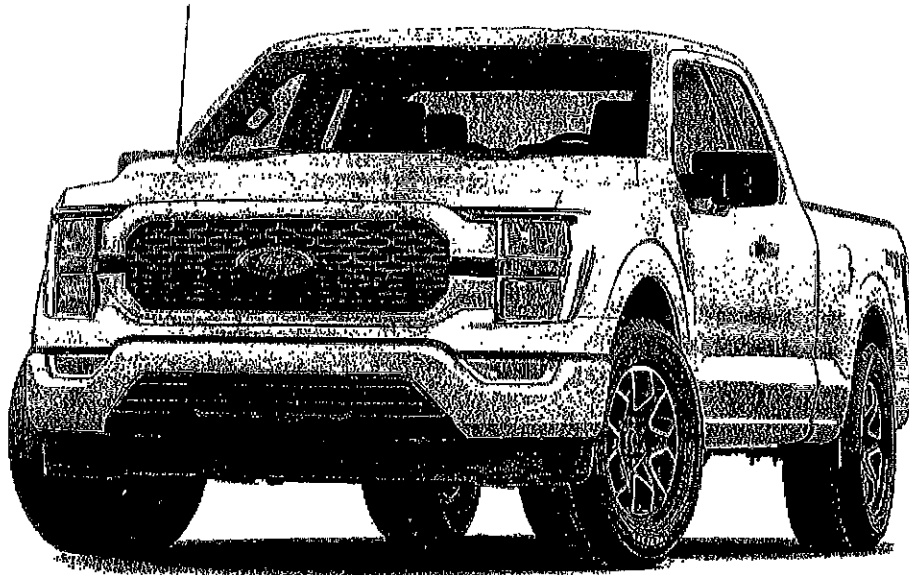
Prepared for: Curtis Beam, East Stroudsburg School District

---

2021 F-150 4x4 SuperCab Styleside 8' box 163" WB XL (X1E)

Price Level: 130

---



**Client Proposal**

Prepared by:

Mark Singleton

Office: 570-839-1111

Email: [msingleton@raypricecars.com](mailto:msingleton@raypricecars.com)

Date: 01/14/2021



Ray Price Ford | 2971 Route 940, Mount Pocono, Pennsylvania, 18344  
Office: 570-839-1111 | Fax: 570-839-3278

Prepared for: Curtis Beam

East Stroudsburg School District

Prepared by: Mark Singleton

01/14/2021



Ray Price Ford | 2071 Route 940 Mount Pocono Pennsylvania | 18344

2021 F-150 4x4 SuperCab Styleside 8' box 163" WB XL (X1E)

Price Level: 130

### As Configured Vehicle

Code	Description	MSRP
X1E	Base Vehicle Price (X1E)	\$38,930.00
101A	Equipment Group 101A High	\$2,280.00
	- Option Discount	-\$750.00
	<i>Includes:</i>	
	- Engine: 5.0L V8	
	<i>Includes auto start-stop technology and flex-fuel capability.</i>	
	- Transmission: Electronic 10-Speed Automatic	
	<i>Includes selectable drive modes: normal, ECO, sport, tow/haul, slippery, deep snow/sand and mud/ru.</i>	
	- 3.31 Axle Ratio	
	- GVWR: 7,000 lbs Payload Package	
	- Tires: 265/70R17 OWL A/T	
	- Wheels: 17" Silver Steel	
	- Radio: AM/FM Stereo w/6 Speakers	
	<i>Includes auxiliary audio input jack.</i>	
	- SYNC 4	
	<i>Includes 8" LCD capacitive touchscreen with swipe capability, wireless phone connection, cloud connected, AppLink with App catalog, 911 Assist, Apple CarPlay and Android Auto compatibility and digital owners manual.</i>	
	- XL Power Equipment Group	
	- Power Glass Sideview Mirrors w/Black Skull Caps	
	<i>Includes heat and manual-folding.</i>	
	- Illuminated Entry	
	- MyKey	
	- Perimeter Alarm	
	- Power Door Locks	
	<i>Includes flip key and integrated key transmitter keyless-entry (includes Autolock).</i>	
	- Power Tailgate Lock	
	- Power Front & Rear Windows	
	- Cruise Control	
	- Reverse Sensing System	
995	Engine: 5.0L V8	Included
	<i>Includes auto start-stop technology and flex-fuel capability.</i>	
44G	Transmission: Electronic 10-Speed Automatic	Included
	<i>Includes selectable drive modes: normal, ECO, sport, tow/haul, slippery, deep snow/sand and mud/ru.</i>	
X27	3.31 Axle Ratio	Included
STDGV	GVWR: 7,000 lbs Payload Package	Included
STDTR	Tires: 265/70R17 OWL A/T	Included
64C	Wheels: 17" Silver Steel	Included
A	Vinyl 40/20/40 Front Seat	N/C
163WB	163" Wheelbase	STD
STDRD	Radio: AM/FM Stereo w/6 Speakers	Included

Prices and content availability as shown are subject to change and should be treated as estimates only. Actual base vehicle, package and option pricing may vary from this estimate because of special local pricing, availability or pricing adjustments not reflected in the dealer's computer system. See salesperson for the most current information.

Prepared for: Curtis Beam  
 East Stroudsburg School District  
 Prepared by: Mark Singleton  
 01/14/2021



Ray Price Ford | 2971 Route 940 Mount Pocono Pennsylvania | 18344

2021 F-150 4x4 SuperCab Styleside 8' box 163" WB XL (X1E)

Price Level: 180

As Configured Vehicle (cont'd)

Code	Description	MSRP
	<i>Includes auxiliary audio input jack. Includes: - SYNC 4 Includes 8" LCD capacitive touchscreen with swipe capability, wireless phone connection, cloud connected, AppLink with App catalog, 911 Assist, Apple CarPlay and Android Auto compatibility and digital owners manual.</i>	
85A	<b>XL Power Equipment Group</b>	Included
	<i>Includes: - Power Glass Sideview Mirrors w/Black Skull Caps Includes heat and manual-folding. - Illuminated Entry - MyKey - Perimeter Alarm - Power Door Locks Includes flip key and integrated key transmitter keyless-entry (Includes Autolock). - Power Tailgate Lock - Power Front &amp; Rear Windows</i>	
53B	<b>Class IV Trailer Hitch Receiver</b>	\$205.00
	Ordering the Trailer Tow Package does not include Integrated Brake Controller (67T). Integrated Brake Controller (67T) is a standalone option and must be ordered separately.  <i>Includes towing capability up to TBD lbs. on 3.3L V6 PFDI engine (99B) and 2.7L EcoBoost engine (99F) or up to TBD lbs. on 3.5L EcoBoost engine (99B) and 5.0L V8 engine (99E), 7-pin wiring harness with 7-pin-to-4-pin adapter and smart trailer tow connector (Includes BLIS w/trailer tow coverage where BLIS is available.).</i>	
PAINT	<b>Monotone Paint Application</b>	STD
76R	<b>Reverse Sensing System</b>	Included
50S	<b>Cruise Control</b>	Included
AS_02	<b>Black Medium Dark Slate</b>	N/C
YZ_01	<b>Oxford White</b>	N/C
<b>SUBTOTAL</b>		<b>\$40,665.00</b>
Destination Charge		\$1,695.00
<b>TOTAL</b>		<b>\$42,360.00</b>

Prices and content availability as shown are subject to change and should be treated as estimates only. Actual base vehicle, package and option pricing may vary from this estimate because of special local pricing, availability or pricing adjustments not reflected in the dealer's computer system. See salesperson for the most current information.

Prepared for: Curtlis Beam

East Stroudsburg School District

Prepared by: Mark Singleton

01/14/2021



Ray Price Ford | 2971 Route 940 Mount Pocono Pennsylvania | 18344

2021 F-150 4x4 SuperCab Styleside 8' box 163" WB XL (X1E)

Price Level: 180

### Pricing Summary - Single Vehicle

		MSRP
<i>Vehicle Pricing</i>		
Base Vehicle Price		\$38,930.00
Options & Colors		\$1,735.00
Upfitting		\$0.00
Destination Charge		\$1,695.00
<b>Subtotal</b>		<b>\$42,360.00</b>
<i>Pre-Tax Adjustments</i>		
<b>Code</b>	<b>Description</b>	
1	PA Costars Discount Vendor #426951	-\$13,208.00
<b>Total</b>		<b>\$29,152.00</b>

Customer Signature

Acceptance Date

Prices and content availability as shown are subject to change and should be treated as estimates only. Actual base vehicle, package and option pricing may vary from this estimate because of special local pricing, availability or pricing adjustments not reflected in the dealer's computer system. See salesperson for the most current information.



V.I.B.2

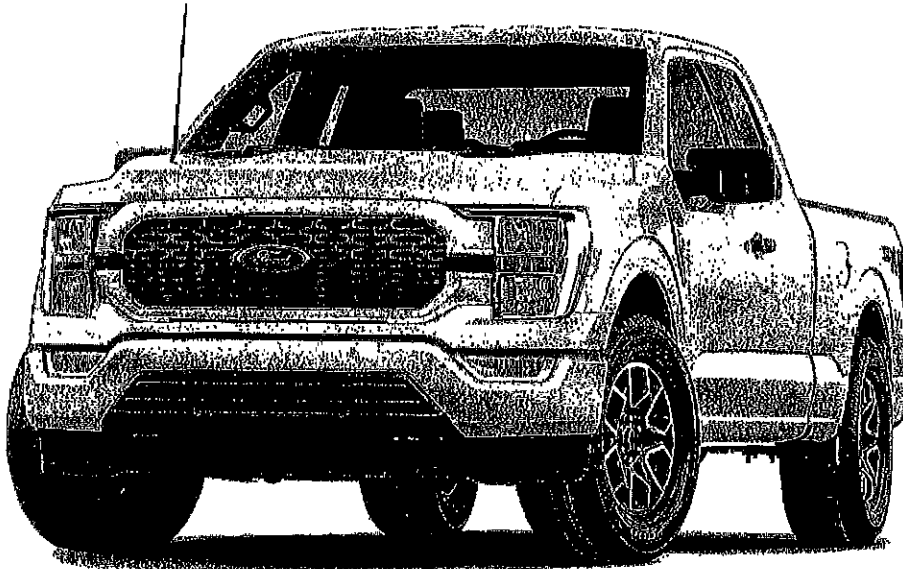
Prepared for: Mr. ROB ROMAGNO, EAST STROUDSBURG SCHOOL DISTRICT

---

2021 F-150 4x4 SuperCab Styleside 8' box 163" WB XL (X1E)

Price Level: 130

---



**Client Proposal**

Prepared by:

JASON SIGAFOOS

Office: 215-348-2901X1821

Date: 01/25/2021



Fred Beans Ford of Doylestown | 876 North Easton Road, Doylestown, Pennsylvania, 18901

Office: 215-348-2900

Prepared for: Mr. ROB ROMAGNO



EAST STROUDSBURG SCHOOL DISTRICT

Prepared by: JASON SIGAFOOS

Fred Beans Ford of Doylestown | 878 North Easton Road Doylestown Pennsylvania |

01/25/2021

19901

2021 F-150 4x4 SuperCab Styleside 8' box 163" WB XL (X1E)

Price Level: 130

### As Configured Vehicle

Code	Description	MSRP
<b>Base Vehicle</b>		
X1E	Base Vehicle Price (X1E)	\$38,930.00
<b>Packages</b>		
101A	Equipment Group 101A High	\$2,280.00
	- Option Discount	-\$750.00
	<i>Includes:</i> - Engine: 5.0L V8 Includes auto start-stop technology and flex-fuel capability. - Transmission: Electronic 10-Speed Automatic Includes selectable drive modes: normal, ECO, sport, tow/haul, slippery, deep snow/sand and mud/rut. - GVWR: 7,150 lbs Payload Package - Tires: 265/70R17 OWL A/T - Wheels: 17" Silver Steel - Radio: AM/FM Stereo w/8 Speakers Includes auxiliary audio input jack. - SYNC 4 Includes 8" LCD capacitive touchscreen with swipe capability, wireless phone connection, cloud connected, AppLink with App catalog, Siri Assist, Apple CarPlay and Android Auto compatibility and digital owners manual. - XL Power Equipment Group - Power Glass Sideview Mirrors w/Black Skull Caps Includes heat and manual-folding. - Illuminated Entry - MyKey - Perimeter Alarm - Power Door Locks Includes flip key and integrated key transmitter keyless-entry (Includes Autolock). - Power Tailgate Lock - Power Front & Rear Windows - Cruise Control - Reverse Sensing System	
<b>Powertrain</b>		
995	Engine: 5.0L V8	Included
	<i>Includes auto start-stop technology and flex-fuel capability.</i>	
44G	Transmission: Electronic 10-Speed Automatic	Included
	<i>Includes selectable drive modes: normal, ECO, sport, tow/haul, slippery, deep snow/sand and mud/rut.</i>	
XL3	Electronic Locking w/3.31 Axle Ratio	\$420.00
STDGV	GVWR: 7,150 lbs Payload Package	Included
<b>Wheels &amp; Tires</b>		
STDTR	Tires: 265/70R17 OWL A/T	Included
64C	Wheels: 17" Silver Steel	Included

Prices and content availability as shown are subject to change and should be treated as estimates only. Actual base vehicle, package and option pricing may vary from this estimate because of special local pricing, availability or pricing adjustments not reflected in the dealer's computer system. See salesperson for the most current information.

Prepared for: Mr. ROB ROMAGNO  
 EAST STROUDSBURG SCHOOL DISTRICT



Prepared by: JASON SIGAFOOS  
 01/25/2021

Fred Beans Ford of Doylestown | 878 North Easton Road Doylestown Pennsylvania |  
 18901

2021 F-150 4x4 SuperCab Styleside 8' box 163" WB XL (X1E)

Price Level: 130

As Configured Vehicle (cont'd)

Code	Description	MSRP
<b>Seats &amp; Seat Trim</b>		
A	Vinyl 40/20/40 Front Seat	N/C
<b>Other Options</b>		
163WB	163" Wheelbase	STD
STDRD	Radio: AM/FM Stereo w/6 Speakers <i>Includes auxiliary audio input jack. Includes: - SYNC 4 Includes 8" LCD capacitive touchscreen with swipe capability, wireless phone connection, cloud connected, AppLink with App catalog, 911 Assist, Apple CarPlay and Android Auto compatibility and digital owners manual.</i>	Included
85A	XL Power Equipment Group <i>Includes: - Power Glass Sideview Mirrors w/Black Skull Caps Includes heat and manual-folding. - Illuminated Entry - MyKey - Perimeter Alarm - Power Door Locks Includes flip key and integrated key transmitter keyless-entry (includes AutoLock). - Power Tailgate Lock - Power Front &amp; Rear Windows</i>	Included
59B	Class IV Trailer Hitch Receiver  Ordering the Trailer Tow Package does not include Integrated Brake Controller (67T). Integrated Brake Controller (67T) is a standalone option and must be ordered separately.  <i>includes towing capability up to TBD lbs. on 3.9L V6 PFDI engine (99B) and 2.7L EcoBoost engine (99P) or up to TBD lbs. on 3.5L EcoBoost engine (99B) and 5.0L V8 engine (99B), 7-pin wiring harness with 7-pin-to-4-pin adapter and smart trailer tow connector (includes BLIS w/trailer tow coverage where BLIS is available.).</i>	Included
59A	Trailer Tow Package  Ordering the Trailer Tow Package does not include Trailer Tow Mirrors. Trailer Tow Mirrors are a standalone option and must be ordered separately. (Option Code: 54Y/59S).  <i>Towing capability up to TBD lbs. Includes tailgate LED. Includes: - Class IV Trailer Hitch Receiver Includes towing capability up to TBD lbs. on 3.9L V6 PFDI engine (99B) and 2.7L EcoBoost engine (99P) or up to TBD lbs. on 3.5L EcoBoost engine (99B) and 5.0L V8 engine (99B), 7-pin wiring harness with 7-pin-to-4-pin adapter and smart trailer tow connector (includes BLIS w/trailer tow coverage where BLIS is available.). - Pro Trailer Backup Assist - Integrated Trailer Brake Controller</i>	\$1,090.00
67T	Integrated Trailer Brake Controller	Included
PAINT	Monotone Paint Application	STD
76R	Reverse Sensing System	Included

Prices and content availability as shown are subject to change and should be treated as estimates only. Actual base vehicle, package and option pricing may vary from this estimate because of special local pricing, availability or pricing adjustments not reflected in the dealer's computer system. See salesperson for the most current information.

Prepared for: Mr. ROB ROMAGNO



EAST STROUDSBURG SCHOOL DISTRICT

Prepared by: JASON SIGAFOOS

Fred Beans Ford of Doylestown | 876 North Easton Road Doylestown Pennsylvania |

01/25/2021

18901

2021 F-150 4x4 SuperCab Styleside 8' box 163" WB XL (X1E)

Price Level: 130

### As Configured Vehicle (cont'd)

Code	Description	MSRP
<b>Fleet Options</b>		
508	Cruise Control	Included
<b>Interior Colors</b>		
AS_02	Black Medlum Dark Slate	N/C
<b>Primary Colors</b>		
YZ_01	Oxford White	N/C
SUBTOTAL		\$41,970.00
Destination Charge		\$1,695.00
TOTAL		\$43,665.00

Prices and content availability as shown are subject to change and should be treated as estimates only. Actual base vehicle, package and option pricing may vary from this estimate because of special local pricing, availability or pricing adjustments not reflected in the dealer's computer system. See salesperson for the most current information.

Prepared for: Mr. ROB ROMAGNO  
EAST STROUDSBURG SCHOOL DISTRICT



Prepared by: JASON SIGAFOOS  
01/25/2021

Fred Beans Ford of Doylestown | 876 North Easton Road Doylestown Pennsylvania |  
18901

2021 F-150 4x4 SuperCab Styleside 8' box 163" WB XL (X1E)

Price Level: 130

## Warranty

### Standard Warranty

#### *Basic*

Distance ..... 36,000 miles      Months ..... 36 months

#### *Powertrain*

Distance ..... 60,000 miles      Months ..... 60 months

#### *Corrosion Perforation*

Distance ..... Unlimited miles      Months ..... 60 months

#### *Roadside Assistance*

Distance ..... 60,000 miles      Months ..... 60 months

Prices and content availability as shown are subject to change and should be treated as estimates only. Actual base vehicle, package and option pricing may vary from this estimate because of special local pricing, availability or pricing adjustments not reflected in the dealer's computer system. See salesperson for the most current information.

Prepared for: Mr. ROB ROMAGNO  
EAST STROUDSBURG SCHOOL DISTRICT



Prepared by: JASON SIGAFOOS  
01/25/2021

Fred Beans Ford of Doylestown | 876 North Easton Road Doylestown Pennsylvania | 18901

2021 F-150 4x4 SuperCab Styleside 8' box 163" WB XL (X1E)

Price Level: 130

### Pricing Summary - Single Vehicle

	MSRP
<i>Vehicle Pricing</i>	
Base Vehicle Price	\$38,930.00
Options & Colors	\$3,040.00
Upfitting	\$0.00
Destination Charge	\$1,695.00
<i>Discount Adjustments</i>	
Discount	-\$9,400.00
PA COSTARS CONTRACT ID # 025 - 124	

**Total PURCHASE PRICE OF THIS TRUCK AS PER SPEC ABOVE ----->>>>>>> \$34,265.00**

THIS TRUCK IS ON THE GROUND NOW AT MY STORE AND AVAILABLE -- TAG - FUEL - DETAIL - DELIVERY INCLUDED

\_\_\_\_\_  
Customer Signature

\_\_\_\_\_  
Acceptance Date

Prices and content availability as shown are subject to change and should be treated as estimates only. Actual base vehicle, package and option pricing may vary from this estimate because of special local pricing, availability or pricing adjustments not reflected in the dealer's computer system. See salesperson for the most current information.

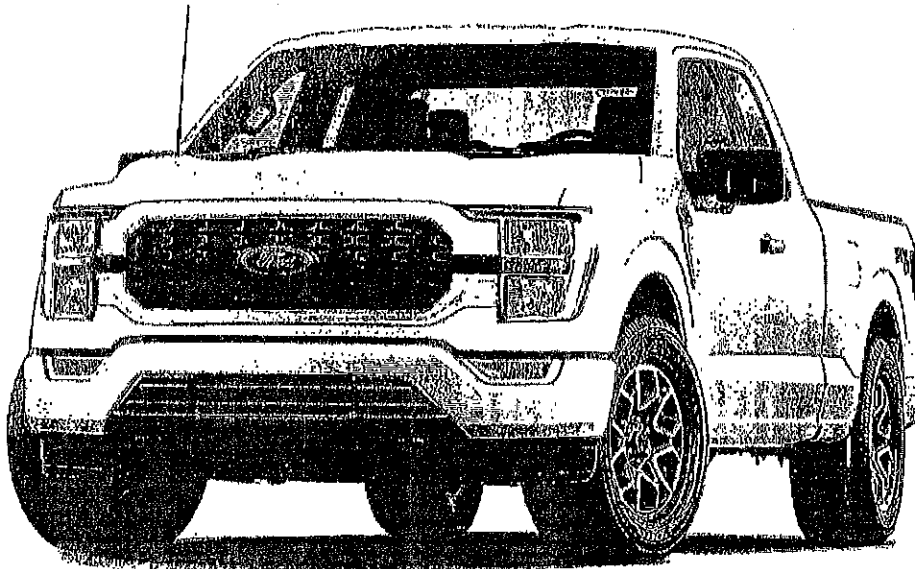
Y.I.B.3

Prepared for: Rob Romagno, East Stroudsburg School District  
Email: robert.romagno@esaad.net

---

2021 F-150 4x4 SuperCab Styleside 8' box 163" WB XL (X1E)  
Price Level: 130

---



**Client Proposal**

Prepared by:  
Justin Shalka  
Office: 484-375-5262  
Email: jshalka@koch33auto.com  
Date: 01/12/2021



Koch 33 Ford | 3810 Hecktown Road, Easton, Pennsylvania, 180452354  
Office: 610-253-9191

**Prepared for: Rob Romagno**

East Stroudsburg School District

Prepared by: Justin Shaika

01/12/2021

Koch 33 Ford | 9810 Heektown Road Easton Pennsylvania | 180452354

**2021 F-150 4x4 SuperCab Styleside 8' box 163" WB XL (X1E)**

Price Level: 130

---

**Rob Romagno, East Stroudsburg School District**

Email: robert.romagno@eesd.net

**Re: Vehicle Proposal 01/12/2021**

---

Dear Rob,

Thank you very much for your interest in acquiring a vehicle from our dealership. Price assumes tax exemption and the use of MG plates.

Regards,

**Justin Shaika**

Commercial Account Manager

484-375-5262

jshaika@koch33auto.com

---

Prices and content availability as shown are subject to change and should be treated as estimates only. Actual base vehicle, package and option pricing may vary from this estimate because of special local pricing, availability or pricing adjustments not reflected in the dealer's computer system. See salesperson for the most current information.



Prepared for: Rob Romagno

East Stroudsburg School District

Prepared by: Justin Shalka

01/12/2021



Koch 98 Ford | 9810 Hecktown Road Easton Pennsylvania | 180452354

2021 F-150 4x4 SuperCab Styleside 8' box 163" WB XL (X1E)

Price Level: 130

### As Configured Vehicle

Code	Description	MSRP
<b>Base Vehicle</b>		
X1E	Base Vehicle Price (X1E)	\$38,930.00
<b>Packages</b>		
100A	Equipment Group 100A Standard <i>Includes:</i> - Engine: 5.0L V8 Includes auto start-stop technology and flex-fuel capability. - Transmission: Electronic 10-Speed Automatic Includes selectable drive modes: normal, ECO, sport, tow/haul, slippery, deep snow/sand and mud/rut. - 3.31 Axle Ratio - GVWR: 7,000 lbs Payload Package - Tires: 265/70R17 OWL A/T - Wheels: 17" Silver Steel - Cloth 40/20/40 Front Seat Includes 2-way manual driver/passenger adjustment and armrest. - Radio: AM/FM Stereo w/8 Speakers Includes auxiliary audio input jack. - SYNC 4 Includes 8" LCD capacitive touchscreen with swipe capability, wireless phone connection, cloud connected, AppLink with App catalog, Siri Assist, Apple CarPlay and Android Auto compatibility and digital owners manual.	N/C
<b>Powertrain</b>		
995	Engine: 5.0L V8 <i>Includes auto start-stop technology and flex-fuel capability.</i>	Included
44G	Transmission: Electronic 10-Speed Automatic <i>Includes selectable drive modes: normal, ECO, sport, tow/haul, slippery, deep snow/sand and mud/rut.</i>	Included
X27	3.31 Axle Ratio	Included
STDGV	GVWR: 7,000 lbs Payload Package	Included
<b>Wheels &amp; Tires</b>		
STDTR	Tires: 265/70R17 OWL A/T	Included
64C	Wheels: 17" Silver Steel	Included
<b>Seats &amp; Seat Trim</b>		
C	Cloth 40/20/40 Front Seat <i>Includes 2-way manual driver/passenger adjustment and armrest.</i>	Included

Prices and content availability as shown are subject to change and should be treated as estimates only. Actual base vehicle, package and option pricing may vary from this estimate because of special local pricing, availability or pricing adjustments not reflected in the dealer's computer system. See salesperson for the most current information.

Note: Prices and content availability as shown are subject to change and should be treated as estimates only. Actual base vehicle, package and option pricing may vary from this estimate because of special local pricing, availability or pricing adjustments not reflected in the dealer's computer system. See salesperson for the most current information.

Prepared for: Rob Romagno

East Stroudsburg School District

Prepared by: Justin Shalka

01/12/2021



Koch 33 Ford | 3810 Hecktown Road Easton Pennsylvania | 180452854

2021 F-150 4x4 SuperCab Styleside 8' box 163" WB XL (X1E)

Price Level: 130

### As Configured Vehicle (cont'd)

Code	Description	MSRP
<b>Other Options</b>		
163WB	163" Wheelbase	STD
STDRD	Radio: AM/FM Stereo w/6 Speakers <i>Includes auxiliary audio input jack. Includes: - SYNC 4 Includes 8" LCD capacitive touchscreen with swipe capability, wireless phone connection, cloud connected, AppLink with App catalog, B11 Assist, Apple CarPlay and Android Auto compatibility and digital owners manual.</i>	Included
85A	XL Power Equipment Group <i>Includes: - Power Glass Sideview Mirrors w/Black Skull Caps Includes heat and manual-folding. - Illuminated Entry - MyKey - Perimeter Alarm - Power Door Locks Includes flip key and integrated key transmitter keyless-entry (Includes Autolock). - Power Tailgate Lock - Power Front &amp; Rear Windows</i>	\$1,170.00
53B	Class IV Trailer Hitch Receiver  Ordering the Trailer Tow Package does not include Integrated Brake Controller (87T). Integrated Brake Controller (87T) is a standalone option and must be ordered separately.  <i>Includes towing capability up to TBD lbs. on 3.3L V6 PFDi engine (89B) and 2.7L EcoBoost engine (89P) or up to TBD lbs. on 3.5L EcoBoost engine (89G) and 5.0L V8 engine (89E). 7-pin wiring harness with 7-pin-to-4-pin adapter and smart trailer tow connector (includes BLIS w/trailer tow coverage where BLIS is available.).</i>	\$205.00
18B	Black Platform Running Boards	\$250.00
PAINT	Monotone Paint Application	STD
153	Front License Plate Bracket <i>Standard in states requiring 2 license plates, optional to all others.</i>	N/C
96W	Tough Bed Spray-In Bedliner  Ford accessory.	\$595.00
<b>Interior Colors</b>		
CS_01	Black/Medium Dark Slate	N/C
<b>Primary Colors</b>		
YZ_01	Oxford White	N/C

Prices and content availability as shown are subject to change and should be treated as estimates only. Actual base vehicle, package and option pricing may vary from this estimate because of special local pricing, availability or pricing adjustments not reflected in the dealer's computer system. See salesperson for the most current information.

Note: Prices and content availability as shown are subject to change and should be treated as estimates only. Actual base vehicle, package and option pricing may vary from this estimate because of special local pricing, availability or pricing adjustments not reflected in the dealer's computer system. See salesperson for the most current information.

Prepared for: Rob Romagno

East Stroudsburg School District

Prepared by: Justin Shalka

01/12/2021

Koch 88 Ford | 3810 Hecktown Road Easton Pennsylvania | 180452354



2021 F-150 4x4 SuperCab Styleside 8' box 163" WB XL (X1E)

Price Level: 130

As Configured Vehicle (cont'd)

Code	Description	MSRP
	SUBTOTAL	\$41,150.00
	Destination Charge	\$1,695.00
	TOTAL	\$42,845.00

Prices and content availability as shown are subject to change and should be treated as estimates only. Actual base vehicle, package and option pricing may vary from this estimate because of special local pricing, availability or pricing adjustments not reflected in the dealer's computer system. See salesperson for the most current information.

Note: Prices and content availability as shown are subject to change and should be treated as estimates only. Actual base vehicle, package and option pricing may vary from this estimate because of special local pricing, availability or pricing adjustments not reflected in the dealer's computer system. See salesperson for the most current information.

Prepared for: Rob Romagno

East Stroudsburg School District

Prepared by: Justin Shalka

01/12/2021

Koch 33 Ford | 3810 Hecktown Road Easton Pennsylvania | 180452364



2021 F-150 4x4 SuperCab Styleside 8' box 163" WB XL (X1E)

Price Level: 130

### Pricing Summary - Single Vehicle

MSRP

*Vehicle Pricing*

Base Vehicle Price	\$38,930.00
Options & Colors	\$2,220.00
Upfitting	\$0.00
Destination Charge	\$1,695.00

---

<b>Subtotal</b>	<b>\$42,845.00</b>
-----------------	--------------------

*Pre-Tax Adjustments*

Code	Description	
1000	Koch 33 PA COSTARS 25-234 CONTRACT Discount	-\$10,054.00

---

<b>Total</b>	<b>\$32,791.00</b>
--------------	--------------------

Customer Signature

Acceptance Date

Prices and content availability as shown are subject to change and should be treated as estimates only. Actual base vehicle, package and option pricing may vary from this estimate because of special local pricing, availability or pricing adjustments not reflected in the dealer's computer system. See salesperson for the most current information.

Note: Prices and content availability as shown are subject to change and should be treated as estimates only. Actual base vehicle, package and option pricing may vary from this estimate because of special local pricing, availability or pricing adjustments not reflected in the dealer's computer system. See salesperson for the most current information.

# Form 611

MUST BE COMPLETED FOR ANY PROCUREMENT OF A SERVICE OR ITEM OVER \$5,000.00

Your email address will be recorded when you submit this form.

Not [robert-romagno@esasd.net](mailto:robert-romagno@esasd.net)? [Switch account](#)

\* Required

**FORM 611**

**EAST STROUDSBURG AREA SCHOOL DISTRICT**

**Procurement Form**

Name Of Requester \*

Robert Romagno

Department \*

Environmental Services Dept.

Building \*

Administration

You're editing your response. Sharing this URL allows others to also edit your response.

**FILL OUT A NEW RESPONSE**

What service or item are you requesting? \*

2021 Ford F-150 4x4

Why are you requesting the service or item? \*

The Environmental Services Dept moves district supplies between schools. We currently have no vehicles for our department.

Suggested Replacement: \*

NA

Please complete an Independent Cost Analysis. (Pre-determine costs prior to contacting a vendor.)

Your answer

Cost Estimate: If over \$5,000, were three (3) quotes obtained? If yes, Please list the vendor's information and quoted amount. \*

Yes, 3 COSTAR quotes were obtained.

Rayprice Ford - \$29,152.00

Koch Ford - \$32,791.00

Fred Beans Ford - \$34,265.00

You're editing your response. Sharing this URL allows others to also edit your response.

FILL OUT A NEW RESPONSE

What is the total cost of the purchase? \*

\$29,152

Procurement Method: \*

- Quote
- Request for Proposal (RFP)
- Bid
- Other:

Was this purchase budgeted? \*

Yes ▼

Was this purchased through a PA State Contract or Approved Consortiums? If yes, select group.

- Yes
- Pennsylvania State Contract
- COSTARS
- Keystone Purchasing Network
- PEPPM National Contract Program (Technology Bidding and Purchasing)
- US Communities

You're editing your response. Sharing this URL allows others to also edit your response.

FILL OUT A NEW RESPONSE

If item was purchased through a Pa State Contract or approved Consortium, please include contract number.

Costars Vendor #426951

Which Fund will be charged? \*

10

What account will be charged? \*

10-2620-610-000-00-000-024-000-0000

Selection of winning proposal, Was the lowest price selected? If not, please explain why and the process of selecting the vendor. \*

Yes

Any additional information you would like to provide.

Your answer

A copy of your responses will be emailed to robert-ramagno@esaad.net.

You're editing your response. Sharing this URL allows others to also edit your response.

FILL OUT A NEW RESPONSE



VI.C.1



# COSTARS PROPOSAL

SPORTS CONSTRUCTION DIVISION  
Athletic Surfaces & Equipment

TO: **SCOTT IHLES- DIRECTOR OF FACILITIES E.S.A.S.D.**

FROM: **BILL MILLER**

JOB: **BUSHKILL E.S.- GYM & STAGE FLOOR SAND & REFINISH**

DATE: **JANUARY 4, 2021**

Scott: I have prepared a proposal for the sanding of the gym and stage floors at Bushkill Elementary School in the East Stroudsburg Area School District. We propose to supply all materials, labor, and equipment necessary to complete the work as further specified.

### COSTARS #008-445 MAINTENANCE, REPAIR & OPERATIONS

COSTARS is the Commonwealth of Pennsylvania's cooperative purchasing program and serves as a conduit through which registered and eligible local public procurement units (LPPUs) and state-affiliated entities (Members) can leverage contracts established by DGS to cost effectively and efficiently identify suppliers with whom to do business.

DGS Contact: Kathy Lewis

Tel: (717) 346-4056

Email: katgarman@pa.gov

**GYM FLOOR SAND & REFINISH:** Sand the gymnasium floor with four cuts of sandpaper down to bare wood. Vacuum and tack the floor free of dust. Apply a five (5) coat Bona Super-Sport HD finish system. Paint the game lines to match the existing layout and add a small logo in the center circle:.....**\$14,840.00**

**STAGE / STEPS SAND & REFINISH:** Sand the stage floor and stairs to bare wood with four cuts of sandpaper down to bare wood. Vacuum and tack the floor free of dust. Apply a four (4) coat stage finish system:.....**\$4,150.00**

**MISCELLANEOUS:** Install a 3' x 8' sheet of rubber in the door opening for protection. Install 68 L' of new aluminum threshold:.....**\$2,460.00**

**Total: \$21,450.00**

**Schedule:** Approximately three (3) weeks construction schedule.

**Clarifications:** The owner is responsible for; proper electric or generator to run our equipment (approximate \$1,400 cost if needed), use of rest rooms and 24/7 access. Add 2% to price for a bond.

**Exclusions:** New equipment, fascia & skirt board work, bonds, permits, prevailing wage rates, permit fees and taxes.

**Terms:** Net 30- 2% per month late fees- NO retainage held. Applicable charges for credit card payments.

**Acceptance:** The above terms, pricing, specs and conditions are satisfactory and hereby approved. Payments will be made as outlined above.

Authorized Signature: \_\_\_\_\_

East Stroudsburg S.D.

Date

Authorized Signature: Wm. H. Miller , \_\_\_\_\_

Bill Miller

January 4, 2021

Date

To process this order please sign and fax to (610) 626-3000 or email to [carol@millerflooring.com](mailto:carol@millerflooring.com)



Corporate Office  
827 Lincoln Avenue Suite 15  
West Chester, PA 19380  
Tel: 610.626.1000 Fax: 610.626.3000

Virginia Office  
5715 South Laburnum Avenue  
Richmond, VA 23231  
Tel: 804.405.4894 Fax: 610.626.3000

800.821.8611

A Division of Miller  
Flooring Company

[www.millerflooring.com](http://www.millerflooring.com)

V.I.C. 2



# COSTARS PROPOSAL

SPORTS CONSTRUCTION DIVISION  
Athletic Surfaces & Equipment

TO: **SCOTT IHLES- DIRECTOR OF FACILITIES E.S.A.S.D.**

FROM: **BILL MILLER**

JOB: **RESICA E.S.- GYM & STAGE FLOOR SAND & REFINISH**

DATE: **JANUARY 4, 2021**

Scott: I have prepared a proposal for the sanding of the gym and stage floors at Resica Elementary School in the East Stroudsburg Area School District. We propose to supply all materials, labor, and equipment necessary to complete the work as further specified.

### COSTARS #008-445 MAINTENANCE, REPAIR & OPERATIONS

COSTARS is the Commonwealth of Pennsylvania's cooperative purchasing program and serves as a conduit through which registered and eligible local public procurement units (LPPUs) and state-affiliated entities (Members) can leverage contracts established by DGS to cost effectively and efficiently identify suppliers with whom to do business.

**DGS Contact:** Kathy Lewis

**Tel:** (717) 346-4056

**Email:** katgarman@pa.gov

**GYM FLOOR SAND & REFINISH:** Sand the gymnasium floor with four cuts of sandpaper down to bare wood. Vacuum and tack the floor free of dust. Apply a five (5) coat Bona Super-Sport HD finish system. Paint the game lines to match the existing layout and add a small logo in the center circle:.....**\$14,840.00**

**STAGE / STEPS SAND & REFINISH:** Sand the stage floor and stairs to bare wood with four cuts of sandpaper down to bare wood. Vacuum and tack the floor free of dust. Apply a four (4) coat stage finish system:.....**\$4,150.00**

**Total: \$18,990.00**

**Schedule:** Approximately three (3) weeks construction schedule.

**Clarifications:** The owner is responsible for; proper electric or generator to run our equipment (approximate \$1,400 cost if needed), use of rest rooms and 24/7 access. Add 2% to price for a bond.

**Exclusions:** New equipment, fascia & skirt board work, bonds, permits, prevailing wage rates, permit fees and taxes.

**Terms:** Net 30- 2% per month late fees- NO retainage held. Applicable charges for credit card payments.

**Acceptance:** The above terms, pricing, specs and conditions are satisfactory and hereby approved. Payments will be made as outlined above.

Authorized Signature: \_\_\_\_\_

East Stroudsburg S.D.

Date

Authorized Signature: Wm H. Miller ; \_\_\_\_\_

Bill Miller

January 4, 2021

Date

To process this order please sign and fax to (610) 626-3000 or email to [carol@millerflooring.com](mailto:carol@millerflooring.com)



Corporate Office  
827 Lincoln Avenue Suite 15  
West Chester, PA 19380  
Tel: 610.626.1000 Fax: 610.626.3000

Virginia Office  
5715 South Laburnum Avenue  
Richmond, VA 23231  
Tel: 804.405.4884 Fax: 610.626.3000

800.821.8611

A Division of Miller  
Flooring Company

[www.millerflooring.com](http://www.millerflooring.com)

Vendor Original Bid	Date	North HS/Lehman Roof Project	Date	Resica Roof Project	Date	Resica Roofing Replacement	Date	Smithfield Co Seal Coating	Date	Transportation Building Tank Removal 3077	Date	North HS/Lehman Hot Water Replacement	Totals
6071 Gwyette Communications	4/14/2020	127,212.00	3/18/2019	1237 WaterProofing Corp.	3/19/2019	303,780.00	4/14/2020	586 Asphalt	4/14/2020	111,510.00		300,000.00	\$11,994,507.00
Application 1	5/25/2020	44,564.40	7/15/2019	8/5/2019	8/685.00	119,970.00	7/13/2020	30,172.05	13/4/2020	69,954.20	12/9/2019	230,850.00	\$ 2,025,107.95
Application 2	6/24/2020	43,191.00	8/7/2019	8/27/2019	55,401.75	65,700.00	6/24/2020		2/22/2021	23,681.80	7/27/2021	36,150.00	\$ 2,025,876.45
Application 3	7/24/2020	39,456.60	7/12/2019	8/2/2019	20,513.90	73,746.50	7/2/2020						\$ 1,332,035.88
Application 4			8/2/2019	8/2/2019	176,615.10	107,297.00	10/29/2020						\$ 1,132,167.07
Application 5			8/2/2019	9/30/2019	76,601.50	181,199.50	11/16/2020						\$ 812,200.88
Application 6			8/2/2019	10/31/2019	26,318.25								\$ 397,335.32
Application 7			10/31/2019	12/9/2019	5,175.00								\$ 740,983.48
Application 8			12/9/2019	1/7/2020	32,230.50								\$ 1,125,610.19
Application 9			1/7/2020	3/31/2020	9,860.00								\$ 698,295.55
Application 10			3/31/2020	6/24/2020	35,737.95								\$ 255,153.27
Application 11			6/24/2020										
Application 12			11/23/2020										
Total Payments to Date		\$ 127,212.00		\$ 656,138.95		\$ 277,610.00		\$ 30,172.05		\$ 99,936.00		\$ 267,000.00	\$ 10,554,746.04
Left on Contract		\$ -		\$ 31,576.05		\$ 26,170.00		\$ 11,044.95		\$ 17,874.00		\$ 31,000.00	\$ 440,253.38
Completion Percentage		100%		95%		91%		73%		84%		89%	89%

Vendor Original Bid	Date	North HS/Lehman Roof Project	Date	Resica Roof Project	Date	Resica Roofing Replacement	Date	Smithfield Co Seal Coating	Date	Transportation Building Tank Removal 3077	Date	North HS/Lehman Hot Water Replacement	Totals
6084 Jt Lambert Camera Installation	3/18/2019	7,008,635.00	10/15/2018	1237 WaterProofing Corp.	3/19/2019	303,780.00	4/14/2020	586 Asphalt	4/14/2020	111,510.00		300,000.00	\$11,994,507.00
Application 1	5/25/2020	44,564.40	7/15/2019	8/5/2019	8/685.00	119,970.00	7/13/2020	30,172.05	13/4/2020	69,954.20	12/9/2019	230,850.00	\$ 2,025,107.95
Application 2	6/24/2020	43,191.00	8/7/2019	8/27/2019	55,401.75	65,700.00	6/24/2020		2/22/2021	23,681.80	7/27/2021	36,150.00	\$ 2,025,876.45
Application 3	7/24/2020	39,456.60	7/12/2019	8/2/2019	20,513.90	73,746.50	7/2/2020						\$ 1,332,035.88
Application 4			8/2/2019	8/2/2019	176,615.10	107,297.00	10/29/2020						\$ 1,132,167.07
Application 5			8/2/2019	9/30/2019	76,601.50	181,199.50	11/16/2020						\$ 812,200.88
Application 6			8/2/2019	10/31/2019	26,318.25								\$ 397,335.32
Application 7			10/31/2019	12/9/2019	5,175.00								\$ 740,983.48
Application 8			12/9/2019	1/7/2020	32,230.50								\$ 1,125,610.19
Application 9			1/7/2020	3/31/2020	9,860.00								\$ 698,295.55
Application 10			3/31/2020	6/24/2020	35,737.95								\$ 255,153.27
Application 11			6/24/2020										
Application 12			11/23/2020										
Total Payments to Date		\$ 127,212.00		\$ 656,138.95		\$ 277,610.00		\$ 30,172.05		\$ 99,936.00		\$ 267,000.00	\$ 10,554,746.04
Left on Contract		\$ -		\$ 31,576.05		\$ 26,170.00		\$ 11,044.95		\$ 17,874.00		\$ 31,000.00	\$ 440,253.38
Completion Percentage		100%		95%		91%		73%		84%		89%	89%

Vendor Original Bid	Date	North HS/Lehman Roof Project	Date	Resica Roof Project	Date	Resica Roofing Replacement	Date	Smithfield Co Seal Coating	Date	Transportation Building Tank Removal 3077	Date	North HS/Lehman Hot Water Replacement	Totals
6084 Jt Lambert Camera Installation	3/18/2019	7,008,635.00	10/15/2018	1237 WaterProofing Corp.	3/19/2019	303,780.00	4/14/2020	586 Asphalt	4/14/2020	111,510.00		300,000.00	\$11,994,507.00
Application 1	5/25/2020	44,564.40	7/15/2019	8/5/2019	8/685.00	119,970.00	7/13/2020	30,172.05	13/4/2020	69,954.20	12/9/2019	230,850.00	\$ 2,025,107.95
Application 2	6/24/2020	43,191.00	8/7/2019	8/27/2019	55,401.75	65,700.00	6/24/2020		2/22/2021	23,681.80	7/27/2021	36,150.00	\$ 2,025,876.45
Application 3	7/24/2020	39,456.60	7/12/2019	8/2/2019	20,513.90	73,746.50	7/2/2020						\$ 1,332,035.88
Application 4			8/2/2019	8/2/2019	176,615.10	107,297.00	10/29/2020						\$ 1,132,167.07
Application 5			8/2/2019	9/30/2019	76,601.50	181,199.50	11/16/2020						\$ 812,200.88
Application 6			8/2/2019	10/31/2019	26,318.25								\$ 397,335.32
Application 7			10/31/2019	12/9/2019	5,175.00								\$ 740,983.48
Application 8			12/9/2019	1/7/2020	32,230.50								\$ 1,125,610.19
Application 9			1/7/2020	3/31/2020	9,860.00								\$ 698,295.55
Application 10			3/31/2020	6/24/2020	35,737.95								\$ 255,153.27
Application 11			6/24/2020										
Application 12			11/23/2020										
Total Payments to Date		\$ 127,212.00		\$ 656,138.95		\$ 277,610.00		\$ 30,172.05		\$ 99,936.00		\$ 267,000.00	\$ 10,554,746.04
Left on Contract		\$ -		\$ 31,576.05		\$ 26,170.00		\$ 11,044.95		\$ 17,874.00		\$ 31,000.00	\$ 440,253.38
Completion Percentage		100%		95%		91%		73%		84%		89%	89%

Vendor Original Bid	Date	North HS/Lehman Roof Project	Date	Resica Roof Project	Date	Resica Roofing Replacement	Date	Smithfield Co Seal Coating	Date	Transportation Building Tank Removal 3077	Date	North HS/Lehman Hot Water Replacement	Totals
6084 Jt Lambert Camera Installation	3/18/2019	7,008,635.00	10/15/2018	1237 WaterProofing Corp.	3/19/2019	303,780.00	4/14/2020	586 Asphalt	4/14/2020	111,510.00		300,000.00	\$11,994,507.00
Application 1	5/25/2020	44,564.40	7/15/2019	8/5/2019	8/685.00	119,970.00	7/13/2020	30,172.05	13/4/2020	69,954.20	12/9/2019	230,850.00	\$ 2,025,107.95
Application 2	6/24/2020	43,191.00	8/7/2019	8/27/2019	55,401.75	65,700.00	6/24/2020		2/22/2021	23,681.80	7/27/2021	36,150.00	\$ 2,025,876.45
Application 3	7/24/2020	39,456.60	7/12/2019	8/2/2019	20,513.90	73,746.50	7/2/2020						\$ 1,332,035.88
Application 4			8/2/2019	8/2/2019	176,615.10	107,297.00	10/29/2020						\$ 1,132,167.07
Application 5			8/2/2019	9/30/2019	76,601.50	181,199.50	11/16/2020						\$ 812,200.88
Application 6			8/2/2019	10/31/2019	26,318.25								\$ 397,335.32
Application 7			10/31/2019	12/9/2019	5,175.00								\$ 740,983.48
Application 8			12/9/2019	1/7/2020	32,230.50								\$ 1,125,610.19
Application 9			1/7/2020	3/31/2020	9,860.00								\$ 698,295.55
Application 10			3/31/2020	6/24/2020	35,737.95								\$ 255,153.27
Application 11			6/24/2020										
Application 12			11/23/2020										
Total Payments to Date		\$ 127,212.00		\$ 656,138.95		\$ 277,610.00		\$ 30,172.05		\$ 99,936.00		\$ 267,000.00	\$ 10,554,746.04
Left on Contract		\$ -		\$ 31,576.05		\$ 26,170.00		\$ 11,044.95		\$ 17,874.00		\$ 31,000.00	\$ 440,253.38
Completion Percentage		100%		95%		91%		73%		84%		89%	89%