



**D'HUY Engineering, Inc.**  
 One East Broad Street, Suite 310 Bethlehem, PA 18018  
 Phone: 610.865.3000 Fax: 610.861.0181

**INVOICE**  
 No. 48874  
 01/31/2019

**East Stroudsburg Area School District**  
 50 Vine Street  
 East Stroudsburg, PA 18301  
 Mr. Tom McIntyre

**East Stroudsburg Area School District Retainer Services**  
**287000**  
 For Services Rendered From January 01, 2019 To January 25, 2019

Retainer Services

**Retainer Services**

**Specified Fee:** \$2,000.00  
**Fee this Period:** \$2,000.00

**INVOICE TOTAL** \$2,000.00

**Prior Billing Information**

Invoice		0 - 30	31 - 60	61-90	Over 90	Balance
48714	12/31/2018	\$2,000.00	\$0.00	\$0.00	\$0.00	\$2,000.00
<b>Total Prior Billing</b>		<b>\$2,000.00</b>	<b>\$0.00</b>	<b>\$0.00</b>	<b>\$0.00</b>	<b>\$2,000.00</b>

ATTACHMEN V1.3.1



**D'HUY Engineering, Inc.**  
One East Broad Street, Suite 310 - Bethlehem, PA 18018  
Phone: 610.865.3000 Fax: 610.861.0181

**INVOICE**

No. 48878  
01/31/2019

**East Stroudsburg Area School District**

50 Vine Street  
East Stroudsburg, PA 18301  
Mr. Tom McIntyre

**Trane Controls Oversight**  
**287013**  
For Services Rendered From January 01, 2019 To January 25, 2019

**00 - Basic Services**

<u>Contract Amount</u>	<u>Previously Billed</u>	<u>% Complete</u>	<u>Invoice Amount</u>
\$26,255.00	\$0.00	2.62	\$689.01

**INVOICE TOTAL** \$689.01



**D'HUY Engineering, Inc.**  
One East Broad Street, Suite 310 Bethlehem, PA 18018  
Phone: 610.865.3000 Fax: 610.861.0181

**INVOICE**

No. 48879  
01/31/2019

**East Stroudsburg Area School District**

50 Vine Street  
East Stroudsburg, PA 18301  
Mr. Tom McIntyre

<p><b>High School North &amp; Lehman I.S. Water Heater Replacement</b></p> <p><b>287014</b></p> <p>For Services Rendered From January 01, 2019 To January 25, 2019</p> <p>DEI Fee = \$17,500 (\$2,500 + 7.5% of estimated cost \$200,000)</p>
---

**00 - Basic Services**

<u>Contract Amount</u>	<u>Previously Billed</u>	<u>% Complete</u>	<u>Invoice Amount</u>
\$17,500.00	\$0.00	8.89	\$1,556.24

**INVOICE TOTAL      \$1,556.24**



**D'HUY Engineering, Inc.**  
 One East Broad Street, Suite 310 Bethlehem, PA 18018  
 Phone: 610.865.3000 Fax: 610.861.0181

**INVOICE**

No. 48876  
 01/31/2019

**East Stroudsburg Area School District**

50 Vine Street  
 East Stroudsburg, PA 18301  
 Mr. Tom McIntyre

**Resica Elementary School Roof Replacement**  
**287011**

For Services Rendered From January 01, 2019 To January 25, 2019

DEI Fee = 7% of Estimated Cost of \$875,000 = \$47,250

**00 - Basic Services**

<u>Contract Amount</u>	<u>Previously Billed</u>	<u>% Complete</u>	<u>Invoice Amount</u>
\$47,250.00	\$1,656.02	20.00	\$7,793.98

**INVOICE TOTAL      \$7,793.98**

**Prior Billing Information**

<u>Invoice</u>	<u></u>	<u>0 - 30</u>	<u>31 - 60</u>	<u>61-90</u>	<u>Over 90</u>	<u>Balance</u>
48716	12/31/2018	\$1,656.02	\$0.00	\$0.00	\$0.00	\$1,656.02
<b>Total Prior Billing</b>		<b>\$1,656.02</b>	<b>\$0.00</b>	<b>\$0.00</b>	<b>\$0.00</b>	<b>\$1,656.02</b>



**D'HUY Engineering, Inc.**  
 One East Broad Street, Suite 310, Bethlehem, PA 18018  
 Phone: 610.865.3000 Fax: 610.861.0181

**INVOICE**

No. 48875  
 01/31/2019

**East Stroudsburg Area School District**

50 Vine Street  
 East Stroudsburg, PA 18301  
 Mr. Tom McIntyre

**High School North Roof Replacement**  
**287010**  
 For Services Rendered From January 01, 2019 To January 25, 2019

DEI Fee = 7% of \$6,675,000 = \$467,250

**01 - High School North / Lehman I.S. Roof Investigation**

Contract Amount	Previously Billed	% Complete	Invoice Amount
\$12,900.00	\$12,900.00	100.00	\$0.00

**02 - Design, Bidding & Construction Phase Services**

Contract Amount	Previously Billed	% Complete	Invoice Amount
\$467,250.00	\$8,595.06	10.00	\$38,129.94

**INVOICE TOTAL \$38,129.94**

**Prior Billing Information**

Invoice		0 - 30	31 - 60	61-90	Over 90	Balance
48715	12/31/2018	\$8,595.06	\$0.00	\$0.00	\$0.00	\$8,595.06
<b>Total Prior Billing</b>		<b>\$8,595.06</b>	<b>\$0.00</b>	<b>\$0.00</b>	<b>\$0.00</b>	<b>\$8,595.06</b>



North America's #1 Snow Removal System  
for Trucks, Trailers & Buses

Proposal for:

Company / Name / Address
East Stroudsburg Area School District 60 Vine Street East Stroudsburg, PA 18301

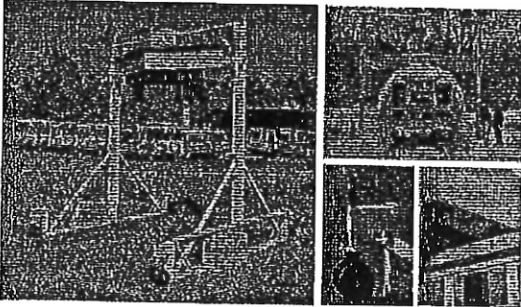
Project Site(s)
East Stroudsburg, PA

Date	2/4/2019
------	----------

Payment Terms	Freight Terms
Net 30 Days	FOB Site

FleetPlows™ for Buses  
Models

**Portable - Model 880B**  
Portable model can be rolled to different locations within your facility.



**Base-Mount - Model 770B**  
Footers must be constructed on site prior to the unit installation. Scraper Systems will provide drawings, bolt patterns, and anchor bolts for the concrete contractor prior to installation.

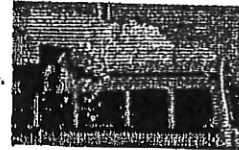


**Wide-Scanner Series 700 available on request**  
Extra-wide models specially designed for spans up to 36'. Mounting system with concrete footers is the same as the Base-Mount.

Scroll down for detailed specifications on FleetPlow Bus models.  
Visit [ScraperSystems.com](http://ScraperSystems.com) for info, videos and testimonials.

**On All FleetPlow Bus Models:**

- Powered Height Adjustment with up/down pendant control to clear vans to full-sized coaches.
- Deep-V Triple Stage Plow Brush Assembly discharges up to two feet of heavy snow to both sides of the vehicle.
- Safe passage over hatches, lights and other roof attachments.



QTY	Each	Total
1	\$21,850	\$21,850

QTY	Each	Total
1	\$3,700	\$3,700
1	\$1,080	\$1,080

**WARRANTY:** Scraper Systems FleetPlows™ (manufactured by Quintin Machinery LLC) are warranted, from the date of shipment, for a period of two (2) years on all mechanical and electrical parts and one (1) year for labor, based on approved travel and labor repair times. Visit [www.ScraperSystems.com](http://www.ScraperSystems.com) for full details.

Manufactured by:  
313 W. Liberty Street  
Suite 106  
Lancaster, PA 17603  
T 888-940-4344



[www.ScraperSystems.com](http://www.ScraperSystems.com)  
[Twitter.com/ScraperSystems](https://twitter.com/ScraperSystems)  
[YouTube.com/ScraperSystems](https://www.youtube.com/ScraperSystems)

Pylon is valid for 60 days. State and local taxes may apply. Any required building permits are the responsibility of the purchaser.

U.S. Patent Numbers 6,802,664; 6,884,285; 6,168,888

**Total (USD) \$26,630**

Sales Contact: [Donnie Bell, 888-340-4344](mailto:Donnie.Bell@ScraperSystems.com)  
[bell@ScraperSystems.com](mailto:bell@ScraperSystems.com)

Accepted by:  
Print Name:  
Title:  
Date:



North America's #1 Snow Removal System  
for Trucks, Trailers & Buses

Proposal for:

Company / Name / Address
East Stroudsburg Area School District 60 Vine Street East Stroudsburg, PA 18301

Project Site(s)
East Stroudsburg, PA

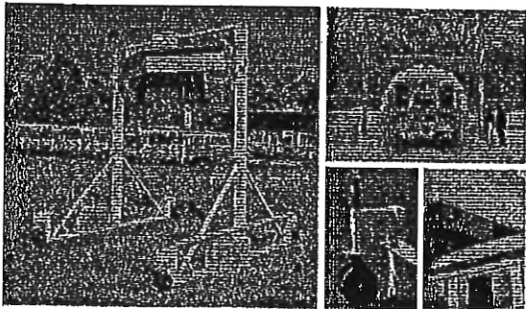
Date	2/4/2019
------	----------

Payment Terms	Freight Terms
Net 30 Days	FOB Site

FleetPlows™ for Buses  
Models



**Portable - Model 880B**  
Portable model can be rolled to different locations within your facility.



**Base-Mount - Model 770B**  
Footers must be constructed on site prior to the unit installation. Scraper Systems will provide drawings, bolt patterns, and anchor bolts for the concrete contractor prior to installation.



**Wide-Spanner Series 700 available on request**  
Extra-wide models specially designed for spans up to 35'. Mounting system with concrete footers is the same as the Base-Mount.

Scroll down for detailed specifications on FleetPlow Bus models.  
Visit [ScraperSystems.com](http://ScraperSystems.com) for info, videos and testimonials.

**On All FleetPlow Bus Models:**

- Powered Height Adjustment with up/down pendant control to clear vans to full-sized coaches.
- Deep-V Triple Stage Flow Brush Assembly discharges up to two feet of heavy snow to both sides of the vehicle.
- Safe passage over hatches, lights and other roof attachments.



QTY		Each	Total
1	Scraper Systems Model 880B Portable FleetPlow™	\$25,900	\$25,900

QTY	Installation & Options:	Each	Total
1	On-site Assembly, Installation & Training, including crew travel wages and expenses.	\$3,700	\$3,700
1	Freight Charge(s)	\$1,080	\$1,080

**WARRANTY:** Scraper Systems FleetPlows™ (manufactured by Quintin Machinery LLC) are warranted, from the date of shipment, for a period of two (2) years on all mechanical and electrical parts and one (1) year for labor, based on approved travel and labor repair times. Visit [www.ScraperSystems.com](http://www.ScraperSystems.com) for full details.

Manufactured by:  
**Quintin**  
313 W. Liberty Street  
Suite 106  
Lewesport, PA 17803  
T: 888-940-4344  
[www.ScraperSystems.com](http://www.ScraperSystems.com)  
[Twitter.com/ScraperSystems](https://twitter.com/ScraperSystems)  
[YouTube.com/ScraperSystems](https://www.youtube.com/ScraperSystems)

Price is valid for 60 days. State and local taxes may apply.  
Any required building permits are the responsibility of the purchaser.  
U.S. Patent Numbers 6,802,854; 6,584,295; 6,169,898

**Total (USD) \$30,680**

Sales Contact: Jackie Bell, 888-340-4344  
[jackie@ScraperSystems.com](mailto:jackie@ScraperSystems.com)

Accepted by:  
Print Name:  
Title:  
Date:

**School Bus Snow Scraper System**

South Bus Lot

Model 880B Portable Fleet Plow by Scraper systems	\$30,680.00
100 ft. 12/2 15-amp power cord	\$125.00

North Bus Lot

Model 770B Base Mount Fleet Plow by Scraper Systems	\$26,630.00
2 yards of 3000 PSI Concrete	\$450.00
Rental of Concrete Saw	\$174.00
12/2 wire	\$142.00
Electrical Conduit	\$90.00
Hot Patch	\$225.00

**Total Projected Costs both bus lots** **\$58,516.00**





## FleetFlow™ for BUS & TRANSIT Specifications - August 2017

Model Number	600B 770B 700 86/16s		
	<b>CONFIGURATION</b>		
<b>PORTABLE:</b> Rollaway chassis on (4) sets of dual 12" heavy duty Plastex Phenolic wheels (front swivel, rear fixed), screw jacks at each wheel set, to lower and raise the machine to or from the ground, (2) 1800 pound fork-liftable concrete stabilizing ballasts, and bolt-on low bars for moving the FleetFlow.	*	*	*
<b>BASE-MOUNT:</b> One inch thick base plates bolted on steel beam columns for placement on concrete footers. Concrete footer design drawings, (6) anchor bolts, and plywood bolt patterns provided for footer construction, by others.	*	*	*
<b>AUTOMATION</b>			
<b>BASIC AUTOMATION:</b> After positioning the vehicle at the correct spot under the plow, the operator lowers the plow with a hand-held pendant control, then releases the down button when the plow reaches the vehicle roof. The driver proceeds forward to clear the snow. Using the pendant control, the operator raises the plow for the next vehicle.	*	*	*
<b>OPERATIONAL</b>			
Deep-V Concave Plow, 13'-4" wide, made of reinforced steel plates. The free-floating, single-point pivotal suspension, with (3) rows of 11" and (2) rows of 16" extreme duty poly snow brushes, and (16) 1/2" thick neoprene contour wipers per side, enables effective removal of up to 24" of heavy, wet snow and ice off the roof to both sides of the vehicle.	*	*	*
Accu-Track™ Plow Guide System for flush contact over the full length of the roof, with ten 8" guide wheels.	*	*	*
Half-ton, extreme duty, 110V, electric chain hoist for plow height adjustment.	*	*	*
Upgraded one ton, extreme duty, 110V, electric chain hoist for plow height adjustment.			*
<b>ELECTRICAL</b>			
Control Panel, mounted on driver's side, with lockable power disconnect switch and removable up/down pendant on 8' cord.	*	*	*
Solid State 9400 lumens LED floodlight.	*	*	*
NEMA 4 water-tight, dust-tight electrical enclosures	*	*	*
Requires only 110 V/16 amp single phase electric. Receptacle accepts extension cord, generator, or hard wiring. Some don't have male receptacle?	*	*	*
Requires only 110 V/16 amp single phase electric service. Control Panel accepts extension cord, generator, or hard wiring (for base-mount models).	*	*	*
All cables and cord sets are "plug 'n play", quick-connect for ease of assembly and maintenance.	*	*	*
<b>STRUCTURAL</b>			
16 ft. Wide drive-thru, heavy-duty structural steel frame constructed of wide flange beams and structural tubing.	*	*	*
Made-to-order, reinforced, extended width, drive-thru frame to span throughways, exits, and entrances up to 35 feet wide.			*
3-step durable all-weather painting process: 1) Rigorous steel grit surface cleaning, 2) High quality, rust-inhibitive alkyd primer, 3) High gloss, high solids, machinery grade enamel premium finish coat.	*	*	*
Grade 8 high tensile bolts used throughout.	*	*	*
<b>DIMENSIONS</b>			
Overall Width (footprint)	18'-7"	21'-0"	24'-0" max
Length (footprint)	10'-10"	7'-0"	7'-0"
Height (including floodlight)	10'-0"	10'-6"	13'-0"
Drive-Thru Clearance Width	14'-8"	14'-8"	varies
Drive-Thru Clearance Height at Full-Up Position (front plow guide wheels above reflective tape strips); 16" brush bristles	13'-6"	13'-3"	13'-3"
Drive-Thru Clearance Height at Lowest Position (front plow guide wheels resting on safety slope); 15" brush bristles	8'-10"	8'-7"	8'-7"
U.S. Patents: 6,802,854; 6,534,295; 6,188,893			

ATTACHMENT

VL. G. 1

Camera Install / Proposed Replacement Schedule / Project Status

School	Date Cameras Originally Installed	Number of Existing Cameras	Proposed Replacement Date/Project Status	Proposed Number of Cameras	Budget Money Allocated	Cabling Installation	Number of Cable Drops Needed	Camera Cost (Actual or Anticipated)	Cabling Costs (Anticipated)	Camera Project Totals
Resica Elementary	Various	18	April/May 2019 - Need Brd Approval	51	Technology Services	District - Maintenance	37	\$64,953.00	\$6,000	\$70,953.00
Bushkill Elementary	Various	10	Summer 2019 - Awaiting Cabling Bids	46	Capital Reserve	Vendor	46	See HSN/LIS	See HSN/LIS	See HSN/LIS
HS North / Lehman Intermediate	2000	78	Summer 2019 - Awaiting Cabling Bids	274	Capital Reserve	Vendor	274	\$424,801.24	\$320,000	\$744,801.24
HS South Campus/Admin	2007	134	Summer 2019/Fall 2019 - Awaiting D'Huy Engineering to prepare cabling bid specs	282	Capital Reserve	Vendor	282	\$346,136.30	\$282,000	\$628,136.30
Middle Smithfield Elementary	2007 - some added in 2009/2010	44	Fall/Winter 2019/2020	64	Capital Reserve (Cabling) / Technology Services (Cameras)	Vendor	64	\$81,600	\$64,000	\$145,600
J.M. Hill Elementary	2013	36	Spring 2020	54	Technology Services	District - Maintenance	18	\$68,850	\$3,200	\$72,050
J.T. Lambert Intermediate	2017	64	TBD	90	Technology Services	District - Maintenance	26	\$114,750	\$4,700	\$119,450
East Stroudsburg Elementary	2017	32	TBD	60	Technology Services	District - Maintenance	28	\$76,500	\$4,800	\$81,300
Smithfield Elementary	2018 (August)	42	Summer 2018 - COMPLETED	42	Technology Services	District - Maintenance	42	\$53,260	\$7,000	\$60,260
TLC & Bus Garage	2019 (February / March)	19	February / March 2019 - COMPLETED	19	Technology Services	District - Maintenance	19	\$24,787.00	\$3,300	\$28,087.00
<b>TOTALS</b>		<b>449</b>		<b>885</b>				<b>\$1,255,637.54</b>	<b>\$695,000</b>	<b>\$1,950,637.54</b>

Allentown  
7248 Tilghman Street  
Suite 120  
Allentown, PA 18106  
1-800-582-6399  
www.integra1.net



## Resica Elementary School Cameras

Quote # 018123 Version 2

February 20, 2019

Prepared for:  
East Stroudsburg Area School District

Prepared by:  
Ashley Miller

Meraki

Description		Price	Qty	Ext. Price
MV72-HW	Cisco Meraki Varifocal MV72 Outdoor HD Dome Camera With 256GB Storage - Network surveillance camera - dome - outdoor - vandal / weatherproof - color (Day&Night) - 4 MP - 1920 x 1080 - 1080p - vari-focal - wireless - Wi-Fi - GbE - H.264 - PoE	\$646.00	24	\$15,504.00
MA-MNT-MV-10	Cisco Meraki - Camera dome mounting arm - wall mountable	\$95.00	24	\$2,280.00
MV12W-HW	Cisco Meraki Wide Angle MV12 Mini Dome HD Camera - Network surveillance camera - dome - color (Day&Night) - 4 MP - 2688 x 1520 - 1080p - fixed focal - audio - Wi-Fi - GbE - H.264 - PoE	\$455.00	27	\$12,285.00
LIC-MV-10YR	Cisco Meraki Enterprise - Subscription license (10 years) + 10 Years Enterprise Support - 1 camera	\$684.00	51	\$34,884.00
<b>Subtotal:</b>				<b>\$64,953.00</b>

per COSTARS contract # HW 003-085

## Resica Elementary School Cameras

**Prepared by:**

**Allentown**

Ashley Miller  
484-223-3480 ext. 1115  
Fax 484-223-3427  
amiller@integra1.net

**Prepared for:**

**East Stroudsburg Area School District**

Accounts Payable  
East Stroudsburg, PA 18301  
Brian Borosh  
(570) 424-8060  
brian-borosh@esasd.net

**Quote Information:**

**Quote #: 018123**

Version: 2  
Delivery Date: 02/20/2019  
Expiration Date: 03/21/2019

### Quote Summary

Description	Amount
Meraki	\$64,953.00
<b>Total:</b>	<b>\$64,953.00</b>

### Payment Options

Description	Payments	Interval	Amount
<b>Lease Options</b>			
3 Year Estimate	36	Monthly	\$1,805.02
4 Year Estimate	48	Monthly	\$1,353.80

### Summary of Selected Payment Options

Description	Amount
<b>Lease Options: 3 Year Estimate</b>	
Selected Payment	\$1,805.02
<b>Total of Payments</b>	<b>\$64,980.72</b>

Pricing subject to change without advanced notice from the manufacturer. Leasing rates are subject to final configuration, pricing, and credit approval. Restock fees will apply for any items returned. Returns must be made within 21 days of receipt of items unopened. Shipping fees not included. The information provided to you in this communication is regarded by IntegraONE to be Confidential and Proprietary Information. This includes the description of the materials/products for sale, the prices quoted, and any description of consulting services to be performed by IntegraONE. This information shall not be disclosed or made available to any party unrelated to this agreement without our express written consent. You must also exercise reasonable care to protect this information from the unauthorized disclosure by others.

**Ship to Address:**

**Additional Information:**

Allentown

East Stroudsburg Area School District

Signature: \_\_\_\_\_

Signature: \_\_\_\_\_

Name: Ashley Miller

Name: Brian Borosh

Title: Account Manager

Date: \_\_\_\_\_

Date: 02/20/2019

Cisco Meraki Cameras

**A. Why are you requesting the service/needs?**

**Why:** We are requesting FIFTY-ONE (51) Cisco Meraki cameras to replace 18 older Honeywell cameras and add 33 additional cameras for increased security at Resica Elementary School.

**Need:** To provide increased security and be able to monitor events at the school.

**Suggested replacement:** Cisco Meraki as indicated on the attached quote.

**B. Cost Estimate: if over \$5,000, were 3 quotes obtained? If yes, please list the vendors and the amounts.** No. One quote was obtained in this instance. We are piggybacking off of the pricing provided by the vendor in October 2018, IntegraOne, based upon the RFP that was issued for cameras on September 21<sup>st</sup>, 2018. Five (5) vendors submitted pricing for the North Camera project in October 2018. IntegraOne provided the lowest price.

- IntegraOne / Cisco Meraki - \$64,953.00

**C. Procurement Method:**

- RFP was issued on September 21<sup>st</sup>, 2019 for Cisco Meraki Cameras at the North Campus and sent to approximately twenty vendors, as well as advertised on the district website and PASchoolBids.com. We are piggybacking off the pricing we received from this RFP. IntegraOne was the lowest priced vendor from the RFP.

**D. Funds account to be charged for Procurement (Was this purchase budgeted?)**

- Yes
- Fund 10
- Account #10-2844-650-000-00-000-006-000-0600
  - Technology Services Initiatives Account

**E. Selection of winning proposal**

- Yes

**F. Other**

N/A

ATTACHMENT VI, H, A

# PROPOSAL



P.O. Box 160  
Northampton, PA 18067-9998  
610-262-3661  
610-262-3737 Fax

January 31, 2019

East Stroudsburg Area School Dist  
50 Vine St  
East Stroudsburg, PA 18301

Attn: Curtis Beam

Ref: North High School  
John Deere 4045 Engine / Kohler 80 KW

- |   |               |                          |
|---|---------------|--------------------------|
| 1 – New Replacement Engine from John Deere, installed | \$ 15, 650.00 | 12-16 Weeks Availability |
| 2 – New Replacement Engine from Kohler, installed     | \$ 18, 350.00 | in Stock                 |
| 3 – Get engine to our shop and evaluate if repairable | \$ 1, 000.00  |                          |

All of the above pricing assumes that all related components are in good working order and reusable.

## Total Estimated Cost for Parts and Labor \$

All pricing for this proposed utilizing Monday through Friday, 7:30 a.m. to 4:30 p.m. working hours. Services provided outside of these working hours are subject to overtime adjustments. All service calls outside of normal working hours, 4:30PM-7:30AM, will be charged at a minimum of (4) four hours at a rate of \$190.00 per hour.

Please provide your PO number below and your signature of authority faxing this order back to Engines Inc. (1-610-262-3737). Please follow up with a hard copy as soon as possible addressed to: **Engines Inc. PO Box 160, 1330 Nor-Bath Blvd. Northampton, PA 18067**

PO# Assigned \_\_\_\_\_ Signature of Authority \_\_\_\_\_

Printed Name \_\_\_\_\_

Thank you,

John Burger  
Power Generation Sales & Service

[john@enginesinc.com](mailto:john@enginesinc.com)  
610-262-3661  
610-262-3737 fax  
570-977-8417 cell



**QUOTATION**

WINTER ENGINE - GENERATOR SERVICE, INC.  
 715 VOGELSONG ROAD • YORK, PA 17404-1764  
 PHONE: (717) 848-3777 • FAX: (717) 846-0188  
 www.winterenggen.com

DATE: 01/30/2019

RE: Motor Replacement

TERMS: NET 30 DAYS. NOTE: EQUIPMENT MUST BE PAID IN FULL BEFORE START-UP CAN BE SCHEDULED.

DELIVERY:



QUANTITY	DESCRIPTION OF MATERIAL	PRICE
	<p>TO: East Stroudsburg School District                      50 Vine Street                      East Stroudsburg, PA 18041</p> <p>We are pleased to provide you with a quoted price to replace the                      East Stroudsburg 80KW emergency generator as follows:</p> <p>Attn: Curtis Beam</p> <ol style="list-style-type: none"> <li>1. New motor, crane service, mileage &amp; labor.</li> <li>2. Re-maned motor, crane service, mileage &amp; labor.</li> </ol> <p>Note: any applicable taxes are not included in the above listed pricing.</p> <p>Please contact our office if you would like to proceed with this scope of work and/or if you have any questions or concerns.</p> <p style="text-align: right;">Thank You Sam Grim</p>	<p>\$17,736.00</p> <p>\$16,414.00</p>

QUOTATION PRICE IS FIRM FOR 60 DAYS.

ATTACHMENT VI . H.C

- ESTIMATE -

"THE EMERGENCY POWER SYSTEM SPECIALISTS"

# Emergency Systems Service Company

401 O'Neill Drive • Quakertown, PA 18951-4227  
Phone: 215 536-4973 • Fax: 215.536.6676

DATE: December 10, 2018

JOB NAME: Bus Garage North

JOB LOCATION: 279 Timberwolf Drive  
Dingmans Ferry, PA 18328

PROPOSAL SUBMITTED TO: East Stroudsburg Area School  
279 Timberwolf Drive  
Dingmans Ferry, PA 18328

ATTN: Matt Hirsch

PHONE: (570) 242-9524

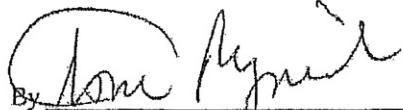
EMAIL: [matthew-hirsch@esasd.net](mailto:matthew-hirsch@esasd.net)

Repairs to Kohler Generator Model # 80REOZJF, Serial # SGM3273XP

1. Supply / Install new John Deere 4045 Engine Assembly
2. Run and Test

TOTAL PRICE: \$ 24,022.00 – 10% discount if paid in terms

Payment Terms: Net 30  
Quotation Firm: 30 Days

By 

Tom Rejniak, Service Manager

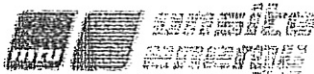
Acceptance of Proposal:

Date of Acceptance \_\_\_\_\_

Purchase Order Number \_\_\_\_\_

Authorized Signature \_\_\_\_\_





- ESTIMATE -

"THE EMERGENCY POWER SYSTEM SPECIALISTS"

# Emergency Systems Service Company

401 O'Neill Drive • Quakertown, PA 18951-4227  
Phone: 215 536-4973 • Fax: 215.536.6676

DATE: December 10, 2018

JOB NAME: Bus Garage North

JOB LOCATION: 279 Timberwolf Drive  
Dingmans Ferry, PA 18328

PROPOSAL SUBMITTED TO: East Stroudsburg Area School  
279 Timberwolf Drive  
Dingmans Ferry, PA 18328

ATTN: Matt Hirsch

PHONE: (570) 242-9524

EMAIL: [matthew-hirsch@esasd.net](mailto:matthew-hirsch@esasd.net)

---

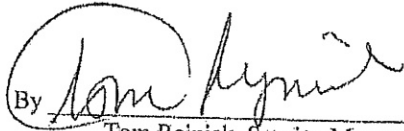
Repairs to Kohler Generator Model # 80REOZJF, Serial # SGM3273XP

1. Supply/Install remanufactured John Deere 4045 Engine Assembly
2. Run and Test

---

TOTAL PRICE: \$ 27,652.00 – 10% discount if paid in terms

Payment Terms: Net 30  
Quotation Firm: 30 Days

By   
Tom Rejniak, Service Manager

---

Acceptance of Proposal:

Date of Acceptance \_\_\_\_\_

Purchase Order Number \_\_\_\_\_

Authorized Signature \_\_\_\_\_



ATTACHMENT VII . A . 1



File #290510  
02/11/19  
Inspector 248

Mr. William Riker, Superintendent  
East Stroudsburg School District  
50 Vine Street  
East Stroudsburg, PA 18301

Order #248128  
East Stroudsburg School District  
Middle Smithfield Elementary School  
5180 Millford Road  
Middle Smithfield Township, PA  
County: Monroe (#45)  
Type of Construction: IIA  
Type of Occupancy: E  
Story Height: 02  
Basement: No

Dear Mr. Riker:

An inspection of the above facility by Inspector Supervisor Robert Hebel and Inspector Tom Cerra, on January 23, 2019, indicates that violations exist of the Laws and/or regulations administered by the Department of Labor and Industry. A list describing the violations, the identity of the regulations violated, and the order describing the necessary corrective actions follows:

General Safety Law  
Act 174, May 18, 1937, P.L. 654 as amended  
43 P.S. §§25-1 - 25-15  
Title 34 - Pennsylvania Code

FINDING NO. 1:

There are numerous roof leaks throughout the building. Water staining was evident on or above the ceiling in rooms 23, 25, 28, 36, 37, 204, 206, 208, 2<sup>nd</sup> floor elevator lobby, gym rear entrance lobby, and at top and bottom of gym stair/ramp. Some leaks are significant and the school has placed buckets, trashcans and such to catch the water.

Act 174  
Section 2(a) (43 P.S. § 25-2(a)) All establishments shall be so constructed, equipped, arranged, operated, and conducted as to provide reasonable and adequate protection for the life, limb, health, safety, and morals of all persons employed therein.

Act 174  
Section 3 (43 P.S. § 25-3) All establishments shall be adequately lighted, heated and ventilated. Proper sanitary facilities shall be provided in sufficient number for the persons employed, and shall include toilet facilities, washing facilities, dressing rooms, and wholesome drinking water of approved quality.

ORDER ITEM NO. 1: Repair all roof leaks to stop water infiltration, replace or repair drywall as needed in area of leaks, replace ceiling tiles as needed.

FINDING NO. 2: Mold was evident in several of the water damaged ceiling areas on both the first and second floors.

Act 174  
Section 2(a) (43 P.S. § 25-2(a)) All establishments shall be so constructed, equipped, arranged, operated, and conducted as to provide reasonable and adequate protection for the life, limb, health, safety, and morals of all persons employed therein.

Act 174  
Section 3 (43 P.S. § 25-3) All establishments shall be adequately lighted, heated and ventilated. Proper sanitary facilities shall be provided in sufficient number for the persons employed, and shall include toilet facilities, washing facilities, dressing rooms, and wholesome drinking water of approved quality.

ORDER ITEM NO. 2: Contract with a certified independent agency to perform an air quality test throughout the building. Based on the findings of the test report, complete an additional plan of remediation to comply with those findings. Upon completion of the plan of action,

retest the areas in the building to assure that proper air quality is maintained. Reports of this inspection shall be provided to the Department of Labor and Industry for further review and action as necessary.

**INDUSTRIAL BOARD PETITION PROCEDURE:** ANY PERSON AGGRIEVED BY THIS ORDER MAY APPEAL TO THE PENNSYLVANIA INDUSTRIAL BOARD PRIOR TO THE COMPLIANCE DATE SET FORTH IN THIS NOTICE OF VIOLATIONS. THE APPEAL MAY BE SENT TO **ROOM 1622**, LABOR AND INDUSTRY BUILDING, 651 BOAS STREET, HARRISBURG, PENNSYLVANIA 17121. THE APPEAL MAY INCLUDE A DISAGREEMENT WITH THE DECISION, A REQUEST FOR A VARIANCE FROM THE GENERAL SAFETY LAW OR A REQUEST FOR AN EXTENSION OF TIME TO COMPLY WITH THE GENERAL SAFETY LAW. THE APPEAL SHALL REFER TO THE NOTICE OF VIOLATION NUMBER FOUND ON THE FRONT PAGE OF THIS NOTICE. THE APPEAL SHALL SET FORTH THE REGULATIONS INVOLVED AND THE BASIS FOR SUCH A VARIANCE. IF AN EXTENSION OF TIME IS REQUESTED, THE APPEAL SHALL SET FORTH THE REGULATION INVOLVED, THE AMOUNT OF TIME REQUESTED, AND THE REASONS FOR AN EXTENSION OF TIME. **VARIANCES AND/OR EXTENSIONS OF TIME REQUESTS MUST BE SUBMITTED ON THE APPROPRIATE FORM.**

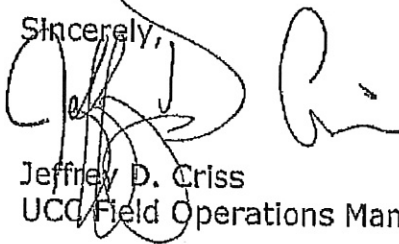
You are hereby directed to correct all violations by the following date:

**COMPLIANCE DATE**

**May 14, 2019**

Failure to comply with this order may result in legal action, which may include and could jeopardize your continued use and occupancy of this building.

Sincerely,



Jeffrey D. Criss  
UCC Field Operations Manager

jmc

cc: Inspector Supervisor R. Hebel (248)  
Inspector T. Cerra (247)  
Complainant  
File

File No.: \_\_\_\_\_

Date: \_\_\_\_\_

**BK-1**

### GENERAL SAFETY LAW INDUSTRIAL BOARD PETITION

This form may be used to seek a variance or an extension of time.

Type or print legibly all requested information. If additional space is required, attach a separate 8-1/2"x11" sheet.

EXPEDITED REVIEW. ADDITIONAL FEE SUBMITTED.

<b>Petitioner</b>	Contact person _____ Company name _____ Street address _____ City _____ State _____ ZIP code _____ Phone _____ Fax no. _____ Email address _____
<b>Construction Site</b>	Labor & Industry File No. _____ Building or structure name _____ Street address _____ City _____ State _____ ZIP code _____ Township, borough or city name _____ County _____
<b>Request for Variance(s)</b>	<p>Provide <u>all</u> of the following information for each variance requested:</p> <ul style="list-style-type: none"> <li>Specify the particular section of the General Safety Law and any applicable code section(s) relating to general safety requirements.</li> <li>Indicate on your plans what portions of the building or structure will be affected by the variance request.</li> <li>Detail what your alternative approach entails and any compensatory measures.</li> <li>State the reasons for the requested variance, including why the strict letter of regulation is impractical, and why the modification would not lessen health, life and safety requirements in the listed code section(s).</li> </ul>
<b>Extension of Time Request</b>	Labor & Industry order # _____ Specify length of extension or completion date _____ Detail the reason for this request: _____
<b>IND. BD USE ONLY</b>	Date received: _____ Check #: _____ Bates #: _____

<b>Filing Requirements</b>	<p>Submission requirements shall be as follows:</p> <ol style="list-style-type: none"> <li>1. One copy of the completed <b>General Safety Law Industrial Board Petition (LIIB-114)</b> and any additional information sheets. When variances are requested, as many variances as needed may be sought via this petition.</li> <li>2. One set of drawings, including floor plans.</li> <li>3. Check or money order made payable to "Commonwealth of Pennsylvania." All fees paid to the Industrial Board must be separate from any fees paid to the Bureau of Occupational and Industrial Safety.</li> </ol> <p><b>Fee Schedule:</b>  Variance/Extension of Time Request.....\$328.06(per building)  Expedited Review..... Additional \$1022 (per building)</p> <p>Contact the Industrial Board at 717-787-6114 for questions or concerns.</p> <p>Mall the complete submission package to:</p> <p style="text-align: center;"><b>Department of Labor &amp; Industry  Industrial Board  651 Boas Street, Room 1622  Harrisburg, PA 17121-0750</b></p> <p><b>NOTE:</b> If additional requests are needed after this petition is filed, you must submit these requests on a separate petition, along with an additional \$328.06 petition fee.</p>
<b>Petitioner Signature</b>	<p>_____</p> <p style="text-align: center;">Petitioner signature</p> <p style="text-align: right;">_____</p> <p style="text-align: right;">Telephone number</p>

*Auxiliary aids and services are available upon request to individuals with disabilities.  
Equal Opportunity Employer/Program*