



Confidential Proposal For
East Stroudsburg Area School District
Brian Borosh

\$1 Purchase Option

The \$1 Purchase Option allows your school to create fixed costs, build equity that can be leveraged for more equipment year after year, and retain the benefits of a \$1.00 purchase option lease structure. This is the best option for schools that want to own their equipment at term's end, want to build a fleet of systems quickly, and/or seek to create a long-term budgetary plan for their systems.

With the \$1 Purchase Option, a school that owns their equipment at term's end may seek to trade in that equipment for credit toward new systems or for cash. Apple's Trade-In Program for Education is available to guide your school through responsible equipment disposal. Many schools have used this program to recover past years' budget dollars in order to pay for a portion of their next systems deployment.

Financed Amount	\$379,704.00
Annual Advance Payment	\$98,385.66
Payment Terms	4 Years

2.44% Taxable APR

Thank you for the opportunity to present this financing proposal for your review. I look forward to discussing your unique situation further. Please do not hesitate to call me at the contact information below with questions or concerns.

Regards,

Amanda Curran
Area Financing Manager
Northeastern U.S. Region

Apple Inc.
Apple Financial Services
12545 Riata Vista Circle
Austin, Texas 78727-6524
T: 610-392-3629
E: amandac@apple.com



Pricing Notes and Conditions

Important: This brochure contains options for financing Apple products and is for informational purposes only. Apple Financial Services is not recommending any particular option. Nothing herein is a commitment to finance. Subject to final credit approval and the completion of necessary documentation. Nothing herein is a guarantee or promise of profitability or generation of revenue. Nothing herein constitutes tax, accounting, financial or legal advice. Apple Financial Services is not a financial advisor and does not have a fiduciary duty to you under federal securities laws. Consult with your financial advisor regarding the options offered and other options that may be available to you.

All quotes are exclusive of any applicable taxes.

Lease Discount Disclosure Statement: Apple Inc., as lessor, through the Apple Education Finance Program, provides an equipment discount ("Discount") to certain third party investors. The proposed lease shall be financed by a particular third party investor and, therefore, the Discount may be applied to facilitate. The actual interest rate you will pay in respect of any resulting lease shall be reflected in an amortization table provided with such lease. The lease discount listed above refers to the lease discount for the lessor's assignee.

The lease charge portion of the Payments (described above) can be determined by applying to the rate which will amortize such down to the Purchase Option amount (as described above) by payment of such Payments. The lease charge rate may be higher than the actual annual interest rate because of the amortization of certain costs, expenses and fees incurred by us. It is understood that even if our mutual intention is confirmed by you, neither party shall be legally bound to the other by reason of this proposal, nor shall any rights, liabilities or obligations arise as a result of this proposal. Subject to verification that the applicant is a state or political subdivision as defined in Section 103 of the Internal Revenue Code of 1986.

IntegraONE
7248 Tilghman Street Suite 120
Allentown, PA 18106
1-800-582-6399
Fax: 484-223-3427
www.integra1.net



HP 9480m Laptop

Quote #002483 v1

May 02, 2016

Prepared for:
East Stroudsburg Area SD

Prepared by:
Ashley Miller

HP Laptop

Description	Price	Qty	Ext. Price
HP 9480m Laptop	\$1,237.00	15	\$18,555.00
CTO IDS - HP EliteBook Folio 9480m w/Intel i7-4600U G6H04AV			
HP EliteBook Folio 9480m Notebook PC with Intel i7-4600U (2.1GHz w/ Turbo, 4MB Cache) Processor, and Intel HD Graphics 4400			
Windows 7 Professional 64 (available through downgrade rights from Windows 8.1 Pro)			
OS Label No OS Label needed for Win 8.1 and Win 10 including Win7DG64/32 OS selections (select this option if Win 8.1, Win 10 and Win7DG64/32 OS is selected)			
Processor Intel® Core™ i7-4600U (2.1GHz w/ Turbo, 4MB Cache) Processor			
Intel Core i7 vPro Label			
Ultrabook Qualified - Required if (Win7DG64, Win10DG76) AND (CAM) AND (WLAN_Intel) and ((SSD) or (MCSSD) or ((HDD) and (FLASH))) is selected			
Estar Label - If any (MSOS) is selected, then MISC eStar label (XU979AV) must be selected			
Intel® vPro Technology Enabled			
14-Inch diagonal LED-backlit HD+ SVA Anti-Glare (1800x900) for Webcam			
Integrated HD Webcam			
8 GB 1600MHz DDR3 (1D)			
Mini Card Not selecting Mini Card SSD as on optional Internal Storage device			
500 GB 7200 rpm SATA hard drive			
32 GB Flash Cache			
Back-lit TouchPad Keyboard			
Intel 7260AN 802.11 a/b/g/n + Bluetooth 4.0			
No HP Mobile Broadband			
Integrated Fingerprint Reader			
45 Watt Smart nPFC AC Adapter			
Power Cord - 1.0 Meters			
4-cell (52 WHr) battery Long Life			
Destination Country Kit Localization Docs			
3/3/0 Warranty			
Warranty 3 YR Battery Documentation- - Required if (BATT3yr) and(WARR3yrUS) is selected			
Drivers for Windows 8.1 (Recovery Media)			

HP Laptop

Description	Price	Qty	Ext. Price
HP Care Pack	\$54.00	15	\$810.00
9x5 Next-Business-Day On-Site Coverage, 3 Years - Electronic U4414E			
HP Docking Station	\$122.00	14	\$1,708.00
2013 HP UltraSlim Docking Station D9Y32AA#ABA			
HP Laptop Carrying Case	\$23.00	14	\$322.00
HP Business Top Load Case (fits up to 15.6") H6M92AA			
HP Stylish Wireless Keyboard/Mouse bundle	\$34.00	14	\$476.00
HP Stylish Wireless KB/Mouse H4B79AA#ABA			

HP Laptop

Description	Price	Qty	Ext. Price
HP Monitors (for laptops w/docking station)	\$148.00	14	\$2,072.00
<p>New! - HP ProDisplay P222va 21.5-inch Monitor Base K7X30AA#ABA HP ProDisplay P222va 21.5-inch Monitor K7X30AA#ABA Input Signal 1 VGA; 1 DisplayPort 1.2 (with HDCP support) Contrast ratio 3000:1 Contrast ratio Brightness (typical) 250 nits Tilt Tilt: -5° to + 22° Height adjustability range None Pivot rotation None Horizontal/Vertical viewing angle (typical) 178/178 degrees Max Power Rating 28 Watts Native resolution 1920 x 1080 Response rate (typical, rise and fall) 8 ms response time Asset Control Asset control supported Integrated speakers No Integrated speakers Anti-Glare and Anti-Static Anti-Glare: Yes Anti-Static: No Warranty Protected by HP 3-year parts, 3-year labor, 3-year onsite limited warranty. Next business day exchange available.</p>			
APC Back-UPS ES 550 - UPS - AC 120 V - 330 Watt - 550 VA - USB - output connectors: 8 - black	\$68.00	24	\$1,632.00
Subtotal:			\$25,575.00

per COSTARS contract # 003-085

HP 9480m Laptop

Prepared by:

integraONE
Ashley Miller
484-223-3480 ext. 1115
Fax: 484-223-3427
amiller@integra1.net

Prepared for:

East Stroudsburg Area SD
Accounts Payable 50 Vine Street
East Stroudsburg, PA 18301
Brian Borosh
brian-borosh@esasd.net
(570) 424-8500

Quote Information:

Quote #: 002483
Version: 1
Quote Date: 05/02/2016
Expiration Date: 05/20/2016

Quote Summary

Description	Amount
HP Laptop	\$25,575.00
Total:	\$25,575.00

Payment Options

Description	Periods	Payments	Amount
Lease Options			
3 Year Estimate	One-Time Payments	Monthly	36
			\$710.72
4 Year Estimate	One-Time Payments	Monthly	48
			\$533.05

Summary of Selected Payment Options

Description	Amount
Lease Options: 3 Year Estimate	
Selected One-Time Payment	\$710.72
Total of One-Time Payments	\$25,585.92

Pricing subject to change without advanced notice from the manufacturer. Leasing rates are subject to final configuration, pricing, and credit approval.

Restock fees will apply for any items returned. Returns must be made within 21 days of receipt of items unopened. Shipping fees not included. The information provided to you in this communication is regarded by integraONE to be Confidential and Proprietary Information. This includes the description of the materials/products for sale, the prices quoted, and any description of consulting services to be performed by integraONE. This information shall not be disclosed or made available to any party unrelated to this agreement without our express written consent. You must also exercise reasonable care to protect this information from the unauthorized disclosure by others.

Ship to Address:

Additional Information:

Signature

Date

IntegraONE
7248 Tilghman Street Suite 120
Allentown, PA 18106
1-800-582-6399
Fax: 484-223-3427
www.integra1.net



HP 800 mini Desktop

Quote #002482 v1

May 02, 2016

Prepared for:
East Stroudsburg Area SD

Prepared by:
Ashley Miller

HP Desktop

Description	Price	Qty	Ext. Price
HP EliteDesk 800 G1 mini Desktop	\$765.00	40	\$30,600.00
-Configurable- HP EliteDesk 800 G1 Desktop Mini PC F3T98AV	Base		
HP EliteDesk 800 G1 Desktop Mini PC	F3T98AV		
Windows 7 Professional 64 bit OS	F3U95AV#ABA		
Chipset			
Intel® Q87 Express Chipset			
Intel® Core™ i7-4765T Processor (2.0 GHz, 8 MB Cache) Intel HD Graphics 4600	F3U14AV		
8GB DDR3-1600 SODIMM (1x8GB) RAM	F3T83AV		
500GB 7200 RPM SATA 2.5 HDD	F3T81AV		
Integrated Network			
Intel® I217LM Gigabit Network Connection	F3U00AV#ABA		
HP USB Keyboard	F3U01AV		
HP USB Mouse	F3T95AV		
HP Desktop Mini Vertical Chassis Stand	F3U20AV		
Single Unit (DM) Packaging	F3T97AV#ABA		
HP EliteDesk 800 G1 DM Country Kit (Includes a Quick Setup and Getting Started manual In English and a country-specific power cord. Available only with the Single Unit packaging.)			
3/3/3 DM Warranty	F3T76AV#ABA		
HP Integrated Work Center Stand	\$54.00	40	\$2,160.00
HP Integrated Work Center Stand for Desktop Mini and Thin Client G1V61AA			
Note: Requires HP Quick Release Kit (purchased separately, not included in the IWC) if customer intends to use the rear slider portion of the IWC stand (behind the display)			

HP Desktop

Description	Price	Qty	Ext. Price
HP ProDisplay 21.5" Monitor	\$148.00	40	\$5,920.00

New! - HP ProDisplay P222va 21.5-inch Monitor **Base**
K7X30AA#ABA
HP ProDisplay P222va 21.5-inch Monitor **K7X30AA#ABA**
Input Signal
 1 VGA; 1 DisplayPort 1.2 (with HDCP support)
Contrast ratio
 3000:1 Contrast ratio
Brightness (typical)
 250 nits
Tilt
 Tilt: -5° to + 22°
Height adjustability range
 None
Pivot rotation
 None
Horizontal/Vertical viewing angle (typical)
 178/178 degrees
Max Power Rating
 28 Watts
Native resolution
 1920 x 1080
Response rate (typical, rise and fall)
 8 ms response time
Asset Control
 Asset control supported
Integrated speakers
 No integrated speakers
Anti-Glare and Anti-Static
Anti-Glare: Yes
Anti-Static: No
Warranty
 Protected by HP 3-year parts, 3-year labor, 3-year onsite limited warranty. Next business day exchange available.

Subtotal: **\$38,680.00**

per COSTARS contract # 003-085

HP 800 mini Desktop

Prepared by:

IntegraONE
Ashley Miller
484-223-3480 ext. 1115
Fax: 484-223-3427
amiller@integra1.net

Prepared for:

East Stroudsburg Area SD
Accounts Payable 50 Vine Street
East Stroudsburg, PA 18301
Brian Borosh
brian-borosh@esasd.net
(570) 424-8500

Quote Information:

Quote #: 002482
Version: 1
Quote Date: 05/02/2016
Expiration Date: 05/20/2016

Quote Summary

Description	Amount
HP Desktop	\$38,680.00
Total:	\$38,680.00

Payment Options

Description	Periods	Payments	Amount
Lease Options			
3 Year Estimate	One-Time Payments	Monthly	36
			\$1,074.90
4 Year Estimate	One-Time Payments	Monthly	48
			\$806.20

Summary of Selected Payment Options

Description	Amount
Lease Options: 3 Year Estimate	
Selected One-Time Payment	\$1,074.90
Total of One-Time Payments	\$38,696.40

Pricing subject to change without advanced notice from the manufacturer. Leasing rates are subject to final configuration, pricing, and credit approval.

Restock fees will apply for any items returned. Returns must be made within 21 days of receipt of items unopened. Shipping fees not included. The information provided to you in this communication is regarded by IntegraONE to be Confidential and Proprietary Information. This includes the description of the materials/products for sale, the prices quoted, and any description of consulting services to be performed by IntegraONE. This information shall not be disclosed or made available to any party unrelated to this agreement without our express written consent. You must also exercise reasonable care to protect this information from the unauthorized disclosure by others.

Ship to Address:

Additional Information:

Signature

Date

IntegraONE
7248 Tilghman Street Suite 120
Allentown, PA 18106
1-800-582-6399
Fax: 484-223-3427
www.integra1.net



Lenovo Build


Quote #002508 v3

May 02, 2016

Prepared for:
East Stroudsburg Area SD

Prepared by:
Ashley Miller

Project

Item	Description	Price	Qty	Ext. Price
20GE0002US 	ThinkPad 11e 3rd Gen, Intel N3150 (1.60GHz, 2MB) 11.6 1366x768 Multitouch, Google Chrome, 4.0GB, 0, Intel Graphics Chipset, Bluetooth 4.0, 720p HD Camera, 3 Cell Li-Polymer, 1 Year Depo	\$369.00	1680	\$619,920.00
CHROME-WG5000	Chrome White Glove 1001-5000 units	\$5.55	1680	\$9,324.00
CROSSWDISE DU	Google Chrome OS Management Console - License - academic	\$24.60	1680	\$41,328.00
NETBOOK36-CT	Bretford Basics Intelligent NETBOOK36-CT - Cart (cord winder) for 36 netbooks - powder-coated steel - concrete powder	\$1,340.00	56	\$75,040.00
			Subtotal:	\$745,612.00

per COSTARS

Lenovo Build

Prepared by:

integraONE
Ashley Miller
484-223-3480 ext. 1115
Fax: 484-223-3427
amiller@integral.net

Prepared for:

East Stroudsburg Area SD
Accounts Payable 50 Vine Street
East Stroudsburg, PA 18301
Brian Borosh
brian-borosh@esasd.net
(570) 424-8500

Quote Information:

Quote #: 002508
Version: 3
Quote Date: 05/02/2016
Expiration Date: 05/21/2016

Quote Summary

Description	Amount
Project	\$745,612.00
Total:	\$745,612.00

Payment Options

Description	Periods	Payments	Amount
Lease Options			
3 Year Estimate	One-Time Payments	Monthly	36
			\$20,720.16
4 Year Estimate	One-Time Payments	Monthly	48
			\$15,540.56

Summary of Selected Payment Options

Description	Amount
Lease Options: 3 Year Estimate	
Selected One-Time Payment	\$20,720.16
Total of One-Time Payments	\$745,925.76

Pricing subject to change without advanced notice from the manufacturer. Leasing rates are subject to final configuration, pricing, and credit approval. Restock fees will apply for any items returned. Returns must be made within 21 days of receipt of items unopened. Shipping fees not included. The information provided to you in this communication is regarded by integraONE to be Confidential and Proprietary Information. This includes the description of the materials/products for sale, the prices quoted, and any description of consulting services to be performed by integraONE. This information shall not be disclosed or made available to any party unrelated to this agreement without our express written consent. You must also exercise reasonable care to protect this information from the unauthorized disclosure by others.

Ship to Address:

Additional Information:

Signature

Date

Price Quote Results for Lenovo Chromebooks and HP Systems for JT Lambert and Lehman Intermediate Schools

LENOVO PRICING						
Item	Quantity	GDC	CDW-G	Staples Technology Solutions	SHI	Integra One
Lenovo ThinkPad Yoga 11e	1680	\$ 747,600.00	\$ 708,960.00	\$ 690,060.00	\$ 672,789.60	\$ 670,572.00
Chromebook Carts	56	\$ 72,545.76	\$ 64,344.00	\$ 72,545.76	\$ 75,985.84	\$ 75,040.00
TOTAL		\$ 820,145.76	\$ 773,304.00	\$ 762,605.76	\$ 748,775.44	\$ 745,612.00
HP EQUIPMENT						
Item	Quantity	GDC	CDW-G	Staples Technology Solutions	SHI	Integra One
HP EliteDesk 800 Desktop	40	\$ 43,480.00	\$ 42,954.80	\$ 42,816.00	\$ 61,671.20	\$ 38,680.00
HP EliteBook Folio 9480m	15	\$ 20,235.00	\$ 22,477.65	\$ 17,435.40	\$ 42,997.20	\$ 19,365.00
HP Docking Station	14	\$ 2,520.00	\$ 2,030.00	\$ 1,771.00	Incl Above	\$ 1,708.00
HP Laptop Carrying Case	14	\$ 476.00	\$ 340.34	\$ 296.38	Incl Above	\$ 322.00
HP Keyboard/Mouse	14	\$ 840.00	\$ 854.00	\$ 492.66	Incl Above	\$ 476.00
HP ProDisplay P222 Monitor	14	\$ 2,030.00	\$ 1,666.00	\$ 1,505.42	Incl Above	\$ 2,072.00
TOTAL		\$ 69,581.00	\$ 70,322.79	\$ 64,316.86	\$ 104,668.40	\$ 62,623.00
GRAND TOTAL		\$ 889,726.76	\$ 843,626.79	\$ 826,922.62	\$ 853,443.84	\$ 808,235.00

Prepared by Brian J. Borosh
April 29th, 2016

HP_LENOVO LEASING COMPARISON

5/9/2016

Principal \$ 809,867.00
Term 4 yrs

VENDOR		ANNUAL PAYMENT
HP Financial Services	\$	217,003.86
Capital One	\$	211,079.39
Cal First	\$	212,071.77
First Niagara	\$	210,688.47

Proposal for School Police Expansion

Presently the East Stroudsburg School Police consist of 9 sworn Officers, One Chief of Police and 8 Patrol Officers. These officers are placed in various schools and patrol duties throughout the day and week, and are distributed as follows.

1 Chief of School Police who supervises/directs daily activities of School Police Officers/ Security officers and Crossing Guards.

1 School Police Officer at High School North

1 School Police Officer at Lehman Intermediate School

1 School Police Officer patrolling the North sector of the district. This officer's primary responsibility is overseeing security/law enforcement/calls for service at the elementary schools in that sector (Bushkill, Middle Smithfield, and Resica). On a daily basis they are to visit the elementary schools check for physical building security issues, be a presence to students and staff and meet with the principal on any issue that requires the presence of a School Police Officer.

1 School Police Officer at JT Lambert

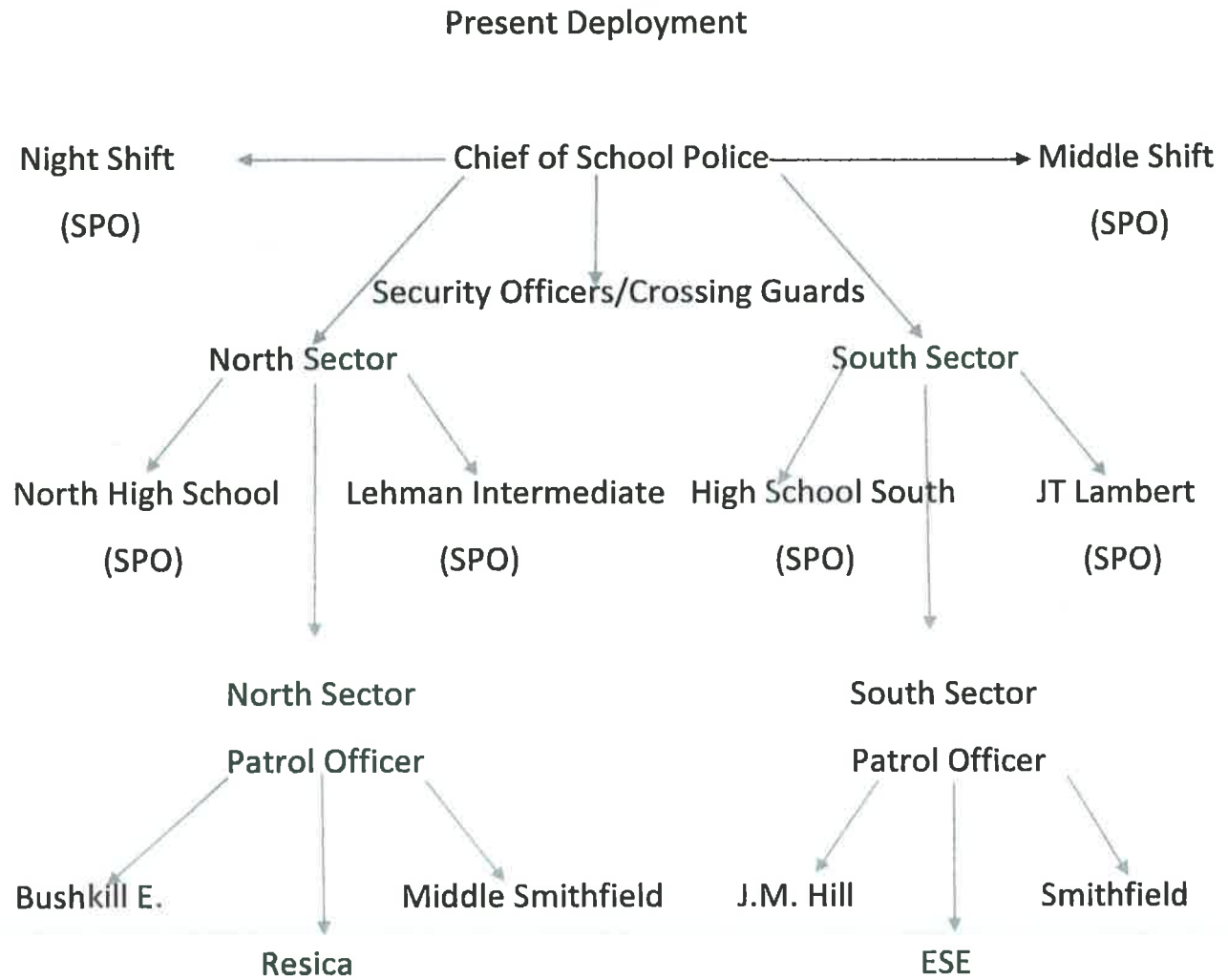
1 School Police Officer at High School South

1 School Police Officer Patrolling the South Sector of the district. This officer's primary responsibility is overseeing security/law enforcement/calls for service at the of the elementary schools in that sector (ESE, Smithfield, and JM Hill) On a daily basis they are to visit the elementary schools check for physical building security issues, be a presence to students and staff and meet with the principal on any issue that requires the presence of a School Police Officer.

1 School Police Officer works Middle Shift to cover bus issues, events, and calls for service.

1 School Police Officer works Night Shift for asset protection (Buildings and Grounds) and calls for service from buildings.

See Flowchart Below



The following are several options for expansion of the School Police Unit to cover all 10 school buildings in the district and costs associated.

Option 1

Addition of 6 armed Trained School Police Officers in 6 elementary buildings that are presently covered by the patrolling officer.

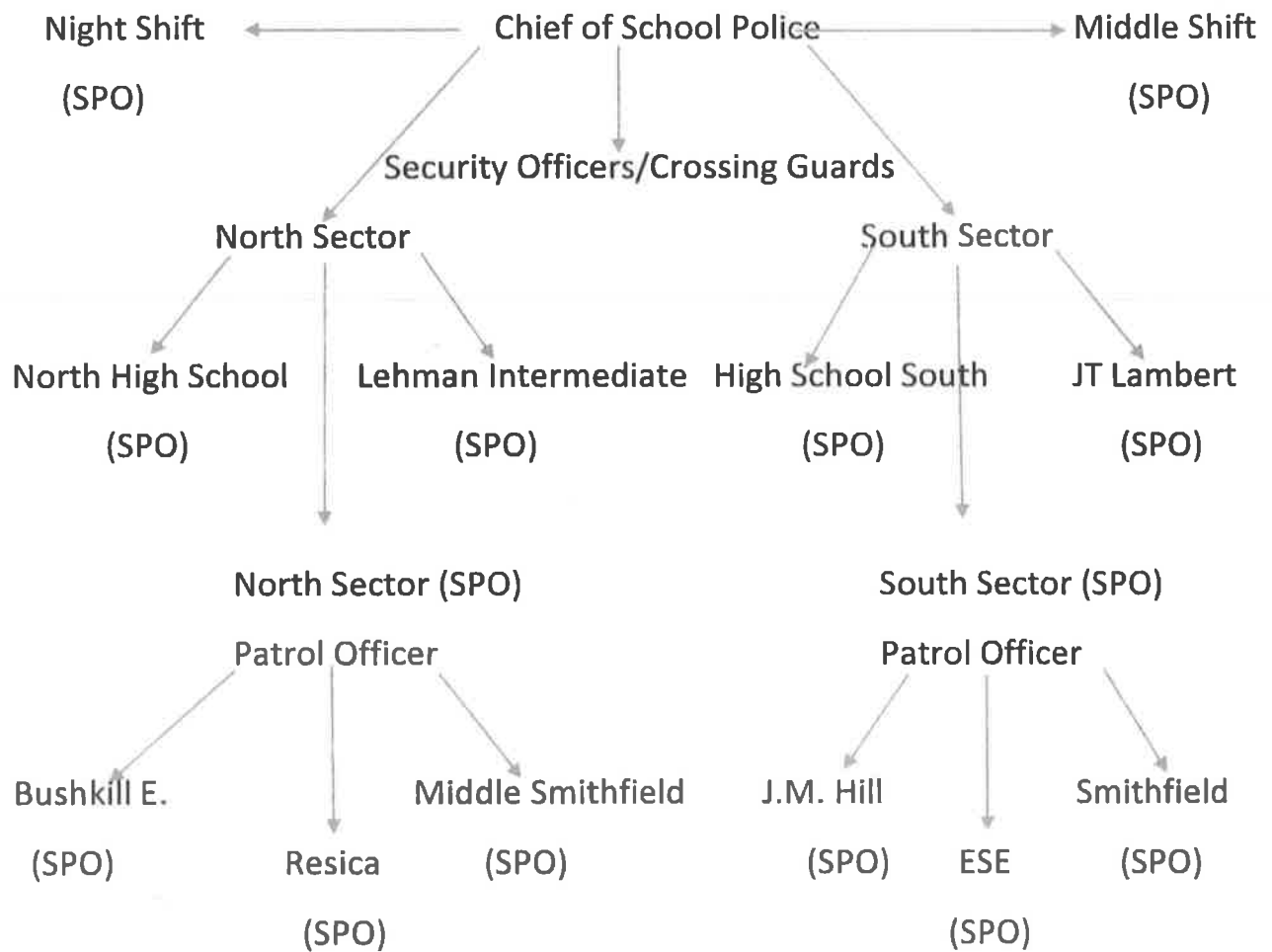
6 Officers-Salaries, and Benefits (10 Month officers) @ \$55,300x6= \$331,800

Add another \$6,000 for Uniforms/Radios.

This option would cover all 6 remaining buildings from 800AM to 430PM Monday through Friday. This officer would be at the building for arrival of students and dismissal. He/she would be responsible for all safety and security, law enforcement, and any other duty such as Crossing Guard, playground security. This officer would be in direct contact with the patrol officer and myself if any emergency situation arises.

This option would keep the two patrolling officers for transports of students, parents, truancy issues, home visits, and bus issues. Also if an officer assigned to an elementary school is on a leave day (Sick/Personal) then the patrolling officer would plug into the school with the vacancy.

See Flowchart Below



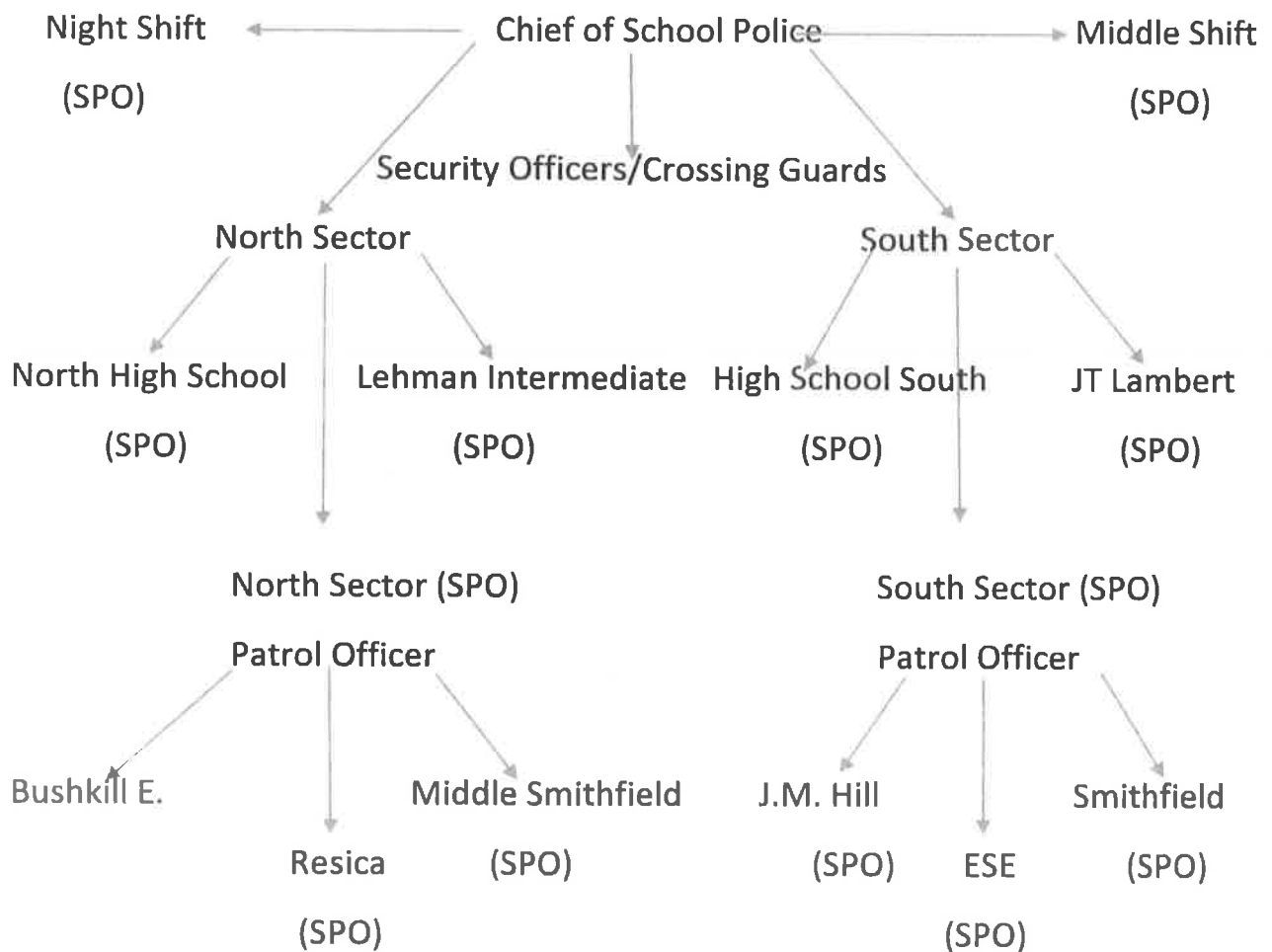
Option 2

Addition of 5 armed Trained School Police officers in 5 elementary buildings, with the exception of Bushkill Elementary School that has two officers in close proximity in the high school/intermediate school complex. The principal and office staff have direct radio contact with the communication center at the high school and the officer will have a quick response time.

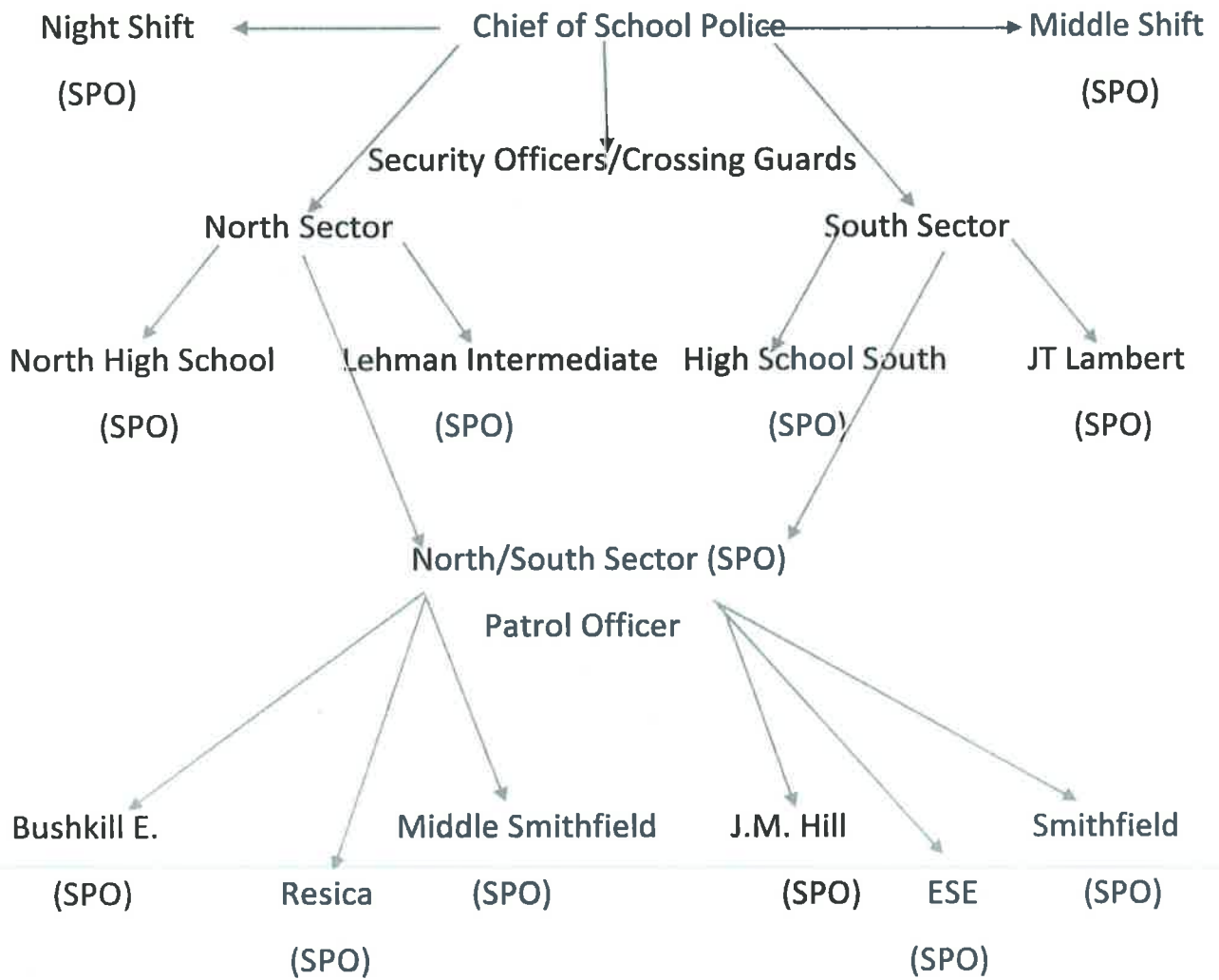
This Option can also be realized with one School Police Officer on patrol and still have an officer in every elementary school building. However, if an officer is on a leave day and the patrol officer would plug into a school then there would be no coverage for extra duties the district may require.

5 Officers-Salaries and Benefits (10 Month officers) @ \$55,300x5=\$276,500

Add \$5,000 for Uniforms/Radios



With One Patrol SPO



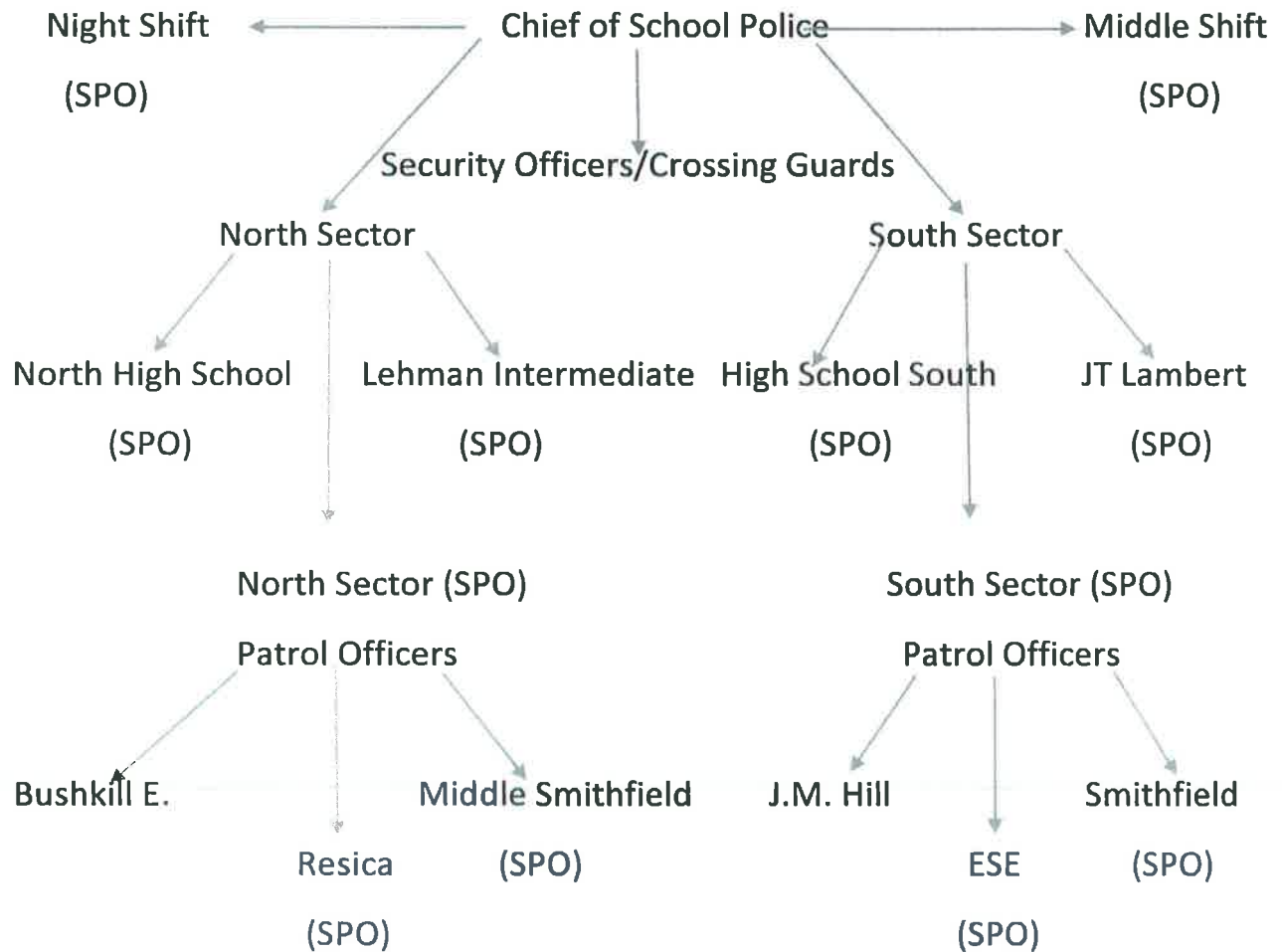
Option 3

Addition of 4 armed trained School Police Officers with this option an officer can be assigned to ESE, Smithfield, Middle Smithfield, and Resica. This would have an assigned officer at the remote buildings. JM Hill and Bushkill can be covered by the patrol officer or the officer from the North Campus which can respond quickly from the high school building. The North campus is covered by two SPOs and the building always has an officer in the building while one officer can respond to Bushkill for any issue. Bushkill Elementary is also in direct radio contact with the communications center in the North High School building. J.M. Hill is in close

proximity to the South High School and can be covered by the South patrol officer or myself in the event of an emergency.

4 Officers Salaries and Benefits (10 Month officers)@\$55,700x4=\$222,800

Uniforms and Radios \$4,000



Option 4

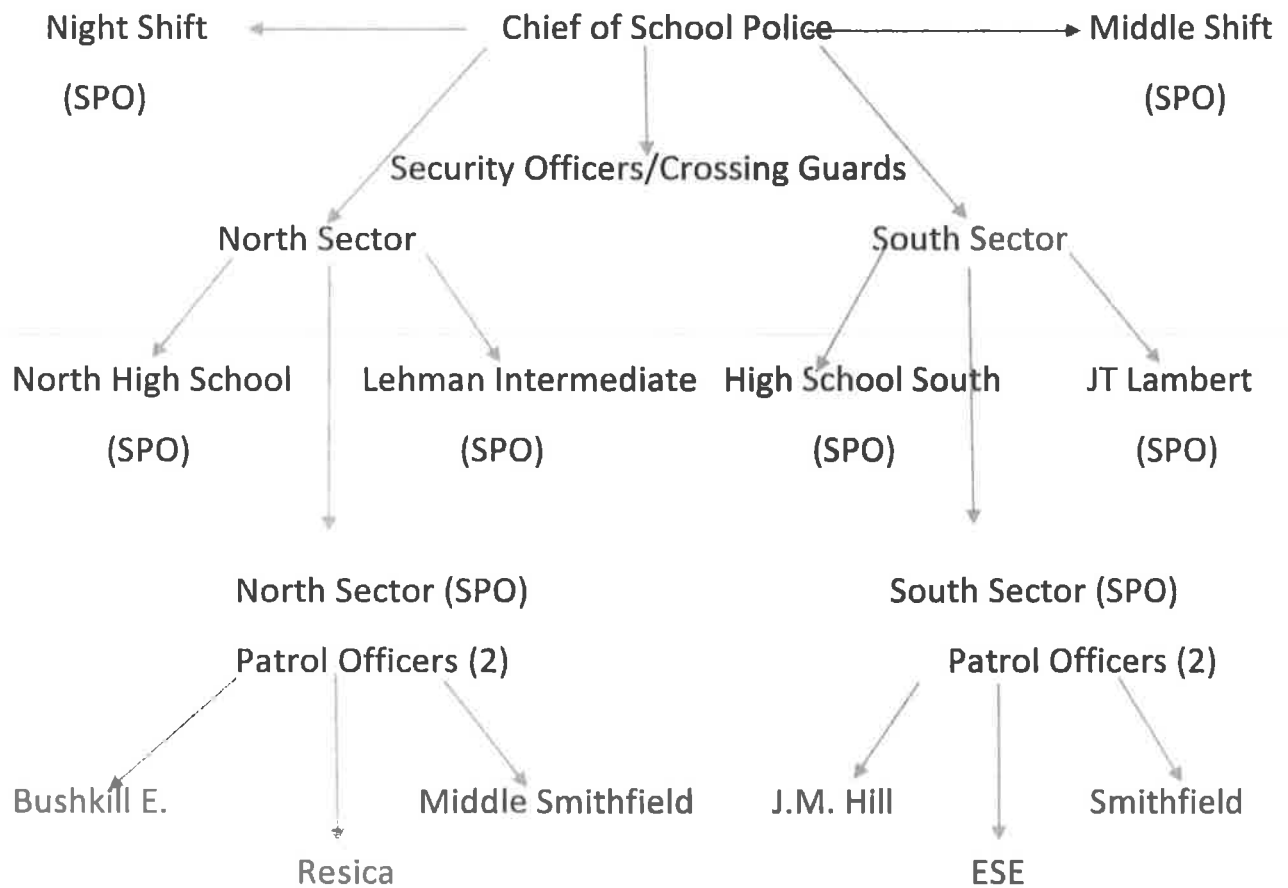
Addition of 2 armed trained School Police Officers that can alternate between elementary schools either on a daily basis or split the day or hours between schools (two preferred) with the patrol officer frequenting the schools where the officer is not present this keeps an omnipresence whereby by alternating hours/ days of the officer, the presence is not predictable to possible threats. The officers covering the school patrol and based officer would be close by in the event of an incident requiring a police response. Duties of this officer would be the same as mentioned above.

2 Officers- Salaries and Benefits (10 Month Officers) $\$55,300 \times 2 = \$110,600$

Add \$2,000 for Uniforms and Radios.

This option can be realized with the North sector officers split between Bushkill, Resica, and Middle Smithfield. With the patrol officer and North officers visiting Bushkill on an intermittent basis. South Sector officer would concentrate on Smithfield and East Stroudsburg Elementary. JM Hill can be covered by the patrol officer when he is not needed for any other patrol issue, the school is close by the South High School with myself and South High School can respond when necessary.

This option allows coverage while not complete as in the above options, it will give the district adequate coverage while being very flexible and cost efficient. If the district decides that additional coverage is needed then additional officers can be added as necessary.



Officers will alternate coverage between schools at different times and days.

With the options above the Warren Street Crossing Guard spot can be eliminated (officer assigned to school would handle the spot) at a cost savings of \$35,700 wages and benefits. This amount can be subtracted from any one of the options listed above.

Option 1 $\$331,800 + \$6,000 - \$35,700 = \$302,100$ (6 Officers)

Option 2 $\$276,500 + \$5,000 - \$35,700 = \$245,800$ (5 Officers)

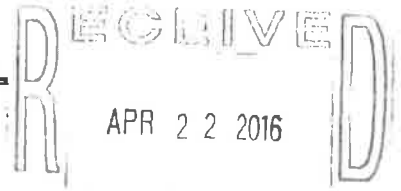
Option 3 $\$222,800 + \$4,000 - \$35,700 = \$191,100$ (4 Officers)

Option 4 $\$110,600 + \$2,000 - \$35,700 = \$76,900$ (2 Officers)

While there may be many different options, I introduced four options to show maximum coverage and alternatives that will improve safety/security coverage and some being cost effective for the district.

East Stroudsburg Area School District

REQUEST FOR TEXTBOOK/NOVEL APPROVAL



Department Chair/Teacher: Regina Brotherton

Date: 3/21/16

School: ESHS-South

Subject Area: Family & Consumer Sciences

Elementary Secondary

Course Title: Fashion & Clothing Construction

Grade Level(s): 10-12

Instructional Level: FCS Elective; all levels

Title of Book: Apparel; Design, Textiles & Construction

Author of Book: Louise Liddell & Carolee Samuels

Copyright Date: 2012 Edition: 10th Edition

Publisher: Goodheart- Willcox

X This is an additional adoption and does not replace any other texts.

This book will replace the book described below.

A. Attach a statement giving the reasons for this selection: *The textbook originally selected for this course only has a few chapters that apply to this content area (2003?); there is a great need for higher level of skill work needed for overall scope of the Fashion/Clothing Construction course for students to reference including history, elements/principles, careers, sewing techniques including pattern construction, advanced sewing skills for apparel construction with machines. This text promotes discussion/lessons on the cultural, societal, environmental, economic, and technological influences on textiles and apparel.*

B. If this book replaces a textbook, attach a statement explaining reasons for replacement.

A. Include an evaluation of the reading level: *This textbook is appropriate for grades 9-12 and has convenient guided reading outlines for all chapters including chapter objectives to focus learning, key terms, reading with a purpose prior to each chapter, and clear content with visuals, charts, diagrams, and follow up activities for differentiated instruction. The text does a great job to focus learners on different levels for application skills, academic cross curricular connections, and workplace links.*

9. The goals and objectives of the textbooks are in keeping with the department's philosophy and current objectives.
10. The method of instruction follows K-12 scope and sequence of instruction.

9.	X	
10.	X	

C. Student Considerations

1. The size and weight of the textbook are convenient for student use.
2. The textbook is durable.
3. The typeface in title, heading and body copy is easy to read.
4. Graphics, charts, illustrations and photographs are attractively displayed and reinforce content material.
5. The overall organization of the textbook is easy to follow.
6. A variety of presentations of information/skills ensure student interest.
7. Directions are clear and simple.
8. Self-evaluation activities provide opportunities for practice and reinforcement.
9. Content and photos are up-to-date and present contemporary situations.
10. The content presents or allows for correlation of career or job skills.

NA	YES	NO
1.	X	
2.	X	
3.	X	
4.	X	
5.	X	
6.	X	
7.	X	
8.	X	
9.	X	
10.	X	

D. Other Considerations

1. In-service training is needed for teachers before the textbook is used in the classroom.
2. The textbook is part of the same or a similar series used in the sending districts.
3. The authors allow for consideration/discussion of several view points.
4. The textbook is highly recommended by the professional organization (Ex. National Council of Teachers of English.)
5. Exclusion/Invisibility
 - a. Materials include the equal treatment of contributions and view-points of both men and women.
 - b. Illustrations show racial and sexual balance.
 - c. A variety of view points concerning historical events or issue are included.
6. Fragmentation/Isolation
 - a. Respect for the dignity and accomplishment of all people regardless of race, color, religion, national origin or disability is evident throughout the text.
 - b. The cultural and social patterns of various ethnic groups are interwoven.
7. Stereotyping
 - a. Lifestyles, depicted in clothing, customs, and behavior, are positively portrayed.
 - b. Minorities, women, and men are depicted equally in leadership and decision-making roles.
8. Linguistic Bias
 - a. Vocabulary is used objectively. There are no derogatory terms or subtle overtones that would be offensive to a given group.
 - b. Sex stereotyped characterizations such as "Boys make the best architects," or "Girls are silly," do not exist.
 - c. The pronouns "he" and "she" or "his" and "hers" are used when gender must be specified.
 - d. The antecedents used as general reference to occupations apply to both sexes and are not based on stereotypes.

NA	YES	NO
1.		X
2.	X	
3.	X	
4.	X	
5a.	X	
5b.	X	
5c.	X	
6a.	X	
6b.	X	
7a.	X	
7b.	X	
8a.	X	
8b.	X	
8c.	X	
8d.	X	

- e. When a woman or a man hold a non-traditional job, attention is not focused on the person's sex, such as "the woman lawyer" or the male nurse."
- f. When referring to males and females, parallel terms are used. (Example, Dr. Jones and his secretary, Ellen, = unparalleled: Dr. Jones, a physician and Mrs. Ellen Smith, a secretary, = parallel.)

9. Imbalance/Selectivity

- a. Curriculum materials directly confront the contemporary social problems of sexism, racism, cultural bias and bias toward the disabled.
- b. Contributions and perspectives of both women and men, diverse cultural/racial groups and the disabled are included.
- c. Members of diverse cultural/racial groups, women, men, and the disabled are shown engaged in a broad range of social and professional activities.
- d. The curriculum encourages activities which explore self awareness and value awareness.

8e.	X	
8f.	X	
9a.	X	
9b.	X	
9c.	X	
9d.	X	
Total		
	51	1

E. Strengths and weakness of text/novel:

Some of the strengths were listed above in the reading level section as well as extremely detailed diagrams for sewing, fabric construction, machine use, etc. This text allows for remediation as well as enrichment since high school courses often need a wide range of instruction techniques since courses have multiple grade levels as well as academic levels.

F. Any objectionable features (profanity, nudity, violence) list:

n/a

G. Recognition, honors received (list):

n/a

H. Supplemental materials (complement program, etc.

Text comes with teacher materials, some online resources and references online workplace, career, and content lessons within the chapters.

Action:

<p><u>Signatures</u></p> <p><u>MOA</u></p> <hr/> <p>Principal</p>	<p><u>Date</u></p> <p><u>4/7/16</u></p> <hr/> <p>APR 22 2016</p>	<p><u>Approved</u></p> <p style="text-align: center;">✓</p> <hr/> <p><u>Not Approved</u></p> <hr/>
<p><u>TGS</u></p> <hr/> <p>Assistant Superintendent for Curriculum and Instruction</p>		

Checklist

A. Concept

1. Concepts/objectives/outcomes are well developed and sequentially presented.
2. Skills are sequenced appropriately, introduced carefully and reviewed periodically.
3. The objectives correlate with state/district outcomes, mission statement and beliefs.
4. Pictures, illustrations, audio-visual aides or software are integrated, compatible and reinforce instruction.
5. Review and practice exercises allow for students to work independently.
6. Supplementary exercise provide work for accelerated students or independent learners..
7. A table of contents, index and glossary are provided
8. A bibliography for student and teacher use is included.
9. Remediation and enrichment exercises are provided.
10. Book complements present curriculum.
11. Subject matter is current and accurate.

NA	YES	NO
1.	X	
2.	X	
3.	X	
4.	X	
5.	X	
6.	X	
7.	X	
8.	X	
9.	X	
10.	X	
11.	X	

B. Teacher Considerations

1. Instructional manuals or guides accompany the textbook.
2. The textbook integrates recent changes and/or technological advances in the subject area.
3. Technology support is available (CD ROM update, laser discs, other software).
4. Testing or assessment components accompany the textbook.
5. A student workbook/software accompanies the textbook.
6. The textbook or supporting references provide resources for reinforcement or enrichment activities.
7. Specific suggestions and instruction for differentiating instruction to meet the needs of students of varying ability are included.
8. The textbook facilitates instructional objectives specified in the course of study.

NA	YES	NO
1.	X	
2.	X	
3.	X	
4.	X	
5.	X	
6.	X	
7.	X	
8.	X	

For MAY 16, 2016 Board Agenda

Motion to approve the TEXTBOOK(s)/NOVEL(s) listed for use in the East Stroudsburg Area School District								
Title of Book	Author/Publisher	Copyright Date	Grade Level	# of Books to Order	Cost Per Book	Teacher Edition	Shipping/ Handling	Cost of Books
Apparel Design, Textiles & Construction	Louis Liddell Carolee Samuels	2012	10-12	30	90.00	FREE		2,700.00 Less: Discount (675.00) * 2,025.00

*This price includes books High School South.

PROPOSED FINAL BUDGET ADJUSTMENTS
5/9/2016

REVENUES

ACCOUNT		DRAFT 2		PROPOSED FINAL		CHANGE	DESCRIPTION
State Property Tax Reduction	\$	4,345,051	\$	4,342,453	\$	(2,598)	Revised per PDE

TOTAL REVENUE ADJUSTMENTS \$ (2,598)

EXPENSES

DEPARTMENT		DRAFT 2		PROPOSED FINAL		CHANGE	DESCRIPTION
Salaries	\$	64,181,112	\$	64,061,278	\$	(119,834)	3 Retirees unfilled, adjust Cyber Academy stipends
Fringe Benefits	\$	42,425,342	\$	38,960,982	\$	(3,464,360)	Health Insurance, Salary Adjustments
Cyber Academy	\$	109,395	\$	122,489	\$	13,094	Purchase add'l computers, Add Driver Ed course
Administrative Services	\$	348,451	\$	436,100	\$	87,649	New Financial & Administrative Software transition
ITECH Leases	\$	1,768,837	\$	1,584,195	\$	(184,642)	Updated financing
ITECH Budget	\$	1,229,006	\$	1,118,458	\$	(110,548)	Copier Lease and other savings
Transportation	\$	1,682,950	\$	1,632,950	\$	(50,000)	Fuel Savings

TOTAL EXPENSE ADJUSTMENTS \$ (3,828,641)

TOTAL CHANGES \$ (3,828,641)

DRAFT 2 DEFICIT \$ (4,397,707)

PROPOSED FINAL BUDGET DEFICIT \$ (569,066)

Jeffrey Bader <jeffrey-bader@esasd.net>

Insight Lease

1 message

Thomas Dirvonas <tom@dirvonas.com>
To: Jeffrey Bader <jeffrey-bader@esasd.net>

Mon, May 9, 2016 at 4:28 PM

Jeff:

As we have discussed, I am recommending that the action of the Board at its April meeting be revised/amended to reflect the \$250,000 upfront or advance payment. A draft motion would be as follows:

HP 3 PAR StoreServe 8200

RECOMMENDATION: Motion to amend the action of the Board taken at the April 18, 2016 regular meeting to provide as follows:

Motion to approve a forty-eight (48) month lease of an HP 3 PAR StoreServe 8200 data storage device with related equipment, software and license with Insight Financial Services, LLC, with an upfront or advance rental payment of \$250,000 to be paid from the 2015-2016 budget, and four (4) annual rental payments of \$99,036.91 each thereafter. The pricing for this lease is based upon Costars Contract #003-085. The terms and conditions of the lease documents shall be subject to the review, revision and approval of the Solicitor, Bond Counsel and Chief Financial Officer.

I would also suggest that this matter be discussed with the Finance Committee so that we can add a note regarding its recommendation.

Call with any questions.

Tom

CONFIDENTIALITY NOTICE

The information contained in this email message is attorney privileged and confidential information intended only for the use of the individual or entity names above. If the reader of this message is not the intended recipient, you are hereby notified that any dissemination, distribution or copy of this communication is strictly prohibited. If you have received this communication in error, please notify us immediately by replying to the original message to us at the email address above. Thank You.



D'HUY Engineering, Inc.

A Tradition of Excellence

CONSULTING ENGINEERS: Project Management Facilities Engineering Structural Design & Analysis Forensic Engineering

May 3, 2016

Mr. Scott Ihle (scott-ihle@esasd.net)
Director of Facilities
East Stroudsburg Area School District
50 Vine Street
East Stroudsburg, PA 18301

Reference: High School North
Gym Humidity

Dear Mr. Ihle,

D'Huy Engineering, Inc. (DEI) is pleased to provide the following proposal for consideration. It is our understanding that you would like us to evaluate the conditions in the gymnasium with respect to seasonal humidity levels and associated movement of the wood floor. Solutions may include operational changes to the existing HVAC system, if feasible, or the addition/replacement of existing HVAC components. A summary of tasks and associated fee is included below:

Task	Description	Fee
1 .	Review existing architectural and HVAC drawings and control sequence	\$ 500
2 .	Perform a field survey to observe and document wood floor construction, HVAC equipment configuration and operation	\$ 750
3 .	Prepare preliminary retrofit and repair solutions for scope and budgeting.	\$ 1,000
4 .	Provide budget and milestone schedule for work.	\$ 500
5 .	Prepare a written report of our findings, including recommendations for remediation.	\$ 1,000
Total:		\$ 3,750

We propose to perform the services outlined above for a lump sum fee of \$3,750 and in accordance with the enclosed Terms and Conditions. This fee includes reimbursable expenses, such as photographs, photocopies, large drawing copies, travel, etc. This scope of work does not include the preparation of plans and specifications for repair work that may be required pursuant to the above referenced investigation. We will provide you with a proposal for the design, documentation, bidding and project oversight after the scope has been identified and East Stroudsburg Area School District has reviewed our recommendations and provided us with direction on the next steps.

We appreciate the opportunity to assist you on this project, and we look forward to contributing as a member of the project team. If you are in agreement with the attached terms and conditions and our fee schedule, kindly countersign this proposal letter and return one copy to our office as your authorization to proceed.

Sincerely,
D'Huy Engineering, Inc.



Josh Grice, P.E.

Owner: East Stroudsburg Area School District

By: _____

Printed Name: _____

Title: _____

Date: _____

Enclosure





D'HUY Engineering, Inc.

A Tradition of Excellence

CONSULTING ENGINEERS: Project Management Facilities Engineering Structural Design & Analysis Forensic Engineering

May 3, 2016

Mr. Scott Ihle (scott-ihle@esasd.net)
Director of Facilities
East Stroudsburg Area School District
50 Vine Street
East Stroudsburg, PA 18301

Reference: Bushkill and Resica Elementary Schools
Atrium Leaks

Dear Mr. Ihle,

D'Huy Engineering, Inc. (DEI) is pleased to provide the following proposal for consideration. It is our understanding that you would like us to investigate the cause of leaks at the atriums in Bushkill and Resica Elementary Schools. We do not anticipate that the scope of the repairs will result in a cost higher than \$19,500 that would require public bidding. Therefore, the fee below includes the preparation of repair details only and not the preparation of full drawings and specifications. Should the scope and cost of the repairs necessitate public bidding, an additional fee will be submitted. A summary of tasks and associated fee is included below:

Task	Description	Fee
1 .	Review existing architectural and roofing details	\$ 500
2 .	Perform a field survey and water test (if needed) to identify source of leaks	\$ 1,250
3 .	Prepare repair details and distribute to contractors for pricing	\$ 1,500
Total:		\$ 3,250

We propose to perform the services outlined above for a lump sum fee of \$3,250 (which includes both schools) and in accordance with the enclosed Terms and Conditions. This fee includes reimbursable expenses, such as photographs, photocopies, large drawing copies, travel, etc.

We appreciate the opportunity to assist you on this project, and we look forward to contributing as a member of the project team. If you are in agreement with the attached terms and conditions and our fee schedule, kindly countersign this proposal letter and return one copy to our office as your authorization to proceed.

Sincerely,
D'Huy Engineering, Inc.

Josh Grice, P.E.

Owner: East Stroudsburg Area School District

By: _____

Printed Name: _____

Title: _____

Date: _____

Enclosure





D'HUY Engineering, Inc.

A Tradition of Excellence

CONSULTING ENGINEERS: Project Management | Facilities Engineering | Structural Design & Analysis | Forensic Engineering

May 3, 2016

Mr. Scott Ihle (scott-ihle@esasd.net)
Director of Facilities
East Stroudsburg Area School District
50 Vine Street
East Stroudsburg, PA 18301

Reference: High School North and Lehman Intermediate School
Roof Evaluation

Dear Mr. Ihle,

D'Huy Engineering, Inc. (DEI) is pleased to provide the following proposal for consideration. It is our understanding that you would like us to further evaluate the conditions of the roof and develop recommendations for areas which require immediate repair or replacement. This evaluation will be a focused review of the areas identified as having wet insulation on the Jersey Infrared survey from September 10, 2015, as well as other areas that may be determined to be a high priority as identified during the survey. These components may include flashings, pitch pockets, expansion joints, and terminations. A summary of tasks and associated fee is included below:

Task	Description	Fee
1 .	Review existing documentation including architectural drawings related to roofing design and detailing, and roofing warranty information	\$ 1,000
2 .	Perform a site survey focused on areas of wet insulation and/or leaks reported by ESASD and features such as flashings, pitch pockets, expansion joints, and terminations	\$ 3,000
3 .	Prepare preliminary retrofit and repair solutions for scope and budgeting.	\$ 2,000
4 .	Provide priorities, budget and milestone schedule for work.	\$ 500
5 .	Prepare a written report of our findings, including recommendations for repair or replacement.	\$ 1,500
Total:		\$ 8,000

We propose to perform the services outlined above for a lump sum fee of \$8,000 and in accordance with the enclosed Terms and Conditions. This fee includes reimbursable expenses, such as photographs, photocopies, large drawing copies, travel, etc. This scope of work does not include the preparation of plans and specifications for repair work that may be required pursuant to the above referenced investigation. We will provide you with a proposal for the design, documentation, bidding and project oversight after the scope has been identified and East Stroudsburg Area School District has reviewed our recommendations and provided us with direction on the next steps.

We appreciate the opportunity to assist you on this project, and we look forward to contributing as a member of the project team. If you are in agreement with the attached terms and conditions and our fee schedule, kindly countersign this proposal letter and return one copy to our office as your authorization to proceed.

Sincerely,
D'Huy Engineering, Inc.



Josh Grice, P.E.

Owner: East Stroudsburg Area School District

By: _____

Printed Name: _____

Title: _____

Date: _____

Enclosure



According to our conversation this past week and by using a protocol developed by ACAC, IICRC and Paul Davis Corporate the following will be observed for the Mold Remediation project at the Recessa Falls Elementary School. We will follow the scope of work presented in the IH Report.

The Lead Technician, Peter Lelewski, is ACAC Mold Certified and his helpers have been working in the field along with him for the last three years. The supervisor, Jim Amici, is also ACAC Mold Certified and has been working in this field for the last six years.

The Mold Remediation work to be performed is as follows:

1. Removal and disposal of affected material (Sheetrock, etc) on the Main level of the building which will be between 10 – 20 sf
2. HEPA Vacuum and scrub the wall cavities of affected area before and after removal of affected materials
3. Application of an antimicrobial fungicide on all wall cavities of affected area on Main Level
4. Removal and disposal of affected materials as required in the Attic area above the Main Level
5. HEPA Vacuum and scrub the affected areas of the Attic above the main floor
6. Application of an antimicrobial fungicide on the affected of the Attic above the main floor
7. In the event that any of the areas are wet we will place drying equipment as needed

Please note the technicians performing the work will be wearing Personal Protective Equipment. A Negative Air Machine will be placed in all of the work areas. An Air Scrubber will be placed outside the Contained areas. A HEPA Vacuum will be placed in the Change Room. Also, read the following items as they will be followed during the Mold Remediation work:

1. We do not use water for Mold Remediation therefore, there is no Amendable Water
2. The locked Debris Container will be the Paul Davis van

3. Once the Containment is put in place it will remain in place until the final Air Sampling has been taken
4. East Stroudsburg School District will replace any materials removed during the Mold Remediation
5. The bags used for the debris will be 6 Mil, they will not be labeled, they will be twisted closed, taped, goosenecked and taped again
6. We will use a two stage entry port to access the work area
7. We will use the State of Pennsylvania Disposal protocol for all debris
8. No detergers will be used, only biocides and bleaching agents will be used

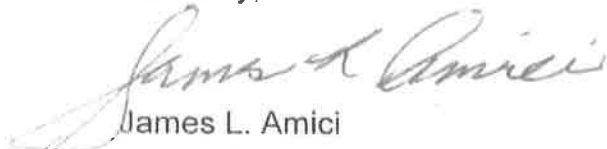
Upon completion of this work we will have Air Quality testing performed by a Certified Home Inspector, Andrew Nyveldt of Pillar to Post or a Certified Inspector of your choice.

A report will be provided to you so that we can jointly determine if further remediation will be required.

There will be no charge for Paul Davis Emergency Services, however, East Stroudsburg School District will be responsible for any and all Air Quality testing and replacement of materials removed (including paint and coatings) during the Mold Remediation work.

Thank you for the opportunity to serve.

Sincerely,



James L. Amici
Senior Partner